

COMPONENTS • MANUFACTURING
ONE Trusted SOURCE
TESTING • ASSEMBLY



Vacuum

Components



Tube

Bright Annealed (BA)

Part Number	
316L	304L
CS-1/2X.049-BA	DS-1/2X.049-BA
CW-3/4X.065-BA	DW-3/4X.065-BA
CW-1X.065-BA	DW-1X.065-BA
CW-1-1/2X.065-BA	DW-1-1/2X.065-BA
CW-2X.065-BA	DW-2X.065-BA
CW-2-1/2X.065-BA	DW-2-1/2X.065-BA
CW-3X.065-BA	DW-3X.065-BA
CW-4X.083-BA	DW-4X.083-BA
CW-6X.109-BA	DW-6X.109-BA

Dimensions in Inches & Millimeters			
Nominal Size (O.D.)		Wall	
inch	mm	inch	mm
1/2"	12.70	0.049	1.24
3/4"	19.05	0.065	1.65
1"	25.40	0.065	1.65
1-1/2"	38.10	0.065	1.65
2"	50.80	0.065	1.65
2-1/2"	63.50	0.065	1.65
3"	76.20	0.065	1.65
4"	101.60	0.083	2.11
6"	152.40	0.109	2.77

Tube

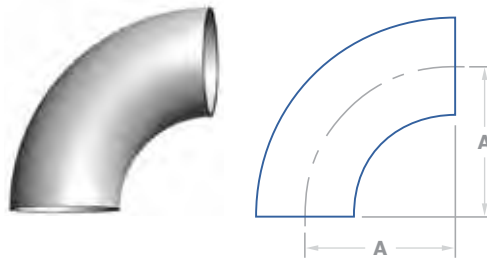
Electropolished (EP)

Part Number
316L
T4A-0S-01000-065B0
T4A-0W-01500-065B0
T4A-0W-02000-065B0
T4A-0W-02500-065B0
T4A-0W-03000-065B0
T4A-0W-04000-083B0
T4A-0W-06000-109B0

Dimensions in Inches & Millimeters			
Nominal Size (O.D.)		Wall	
inch	mm	inch	mm
1"	25.40	0.065	1.65
1-1/2"	38.10	0.065	1.65
2"	50.80	0.065	1.65
2-1/2"	63.50	0.065	1.65
3"	76.20	0.065	1.65
4"	101.60	0.083	2.11
6"	152.40	0.109	2.77



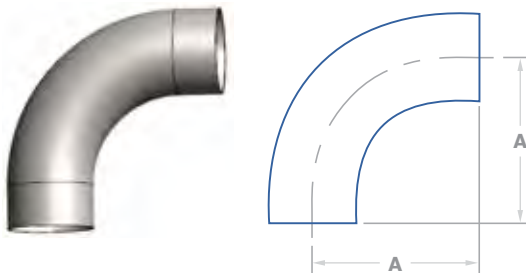
90° Elbow No Tangent



Part Number
V*-2-W04
V*-2-W05
V*-2-W07
V*-2-W10
V*-2-W12
V*-2-W14
V*-2-W18
V*-2-W26

Dimensions in Inches & Millimeters			
Nominal Size		A	
inch	mm	inch	mm
3/4"	19.05	1.125	28.58
1"	25.40	1.500	38.10
1-1/2"	38.10	2.250	57.15
2"	50.80	3.000	76.20
2-1/2"	63.50	3.750	95.25
3"	76.20	4.500	114.3
4"	101.60	6.000	152.4
6"	152.40	9.000	228.6

90° Elbow with Tangent



Part Number
V*-2T-W04
V*-2T-W05
V*-2T-W07
V*-2T-W10
V*-2T-W12
V*-2T-W14
V*-2T-W18

Dimensions in Inches & Millimeters			
Nominal Size		A	
inch	mm	inch	mm
3/4"	19.05	3.000	76.20
1"	25.40	2.063	52.40
1-1/2"	38.10	2.938	74.63
2"	50.80	4.063	103.20
2-1/2"	63.50	5.188	131.78
3"	76.20	6.313	160.35
4"	152.40	8.313	211.15

* To include part number material & finish options please reference configurator on pages #120 - 121

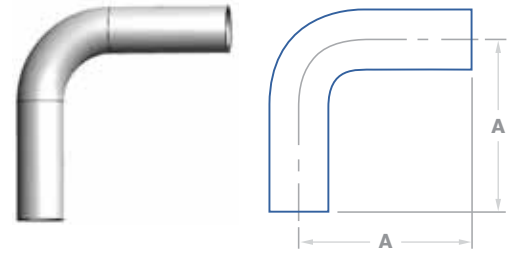


Valex

Vacuum
Components

Buttweld Elbows

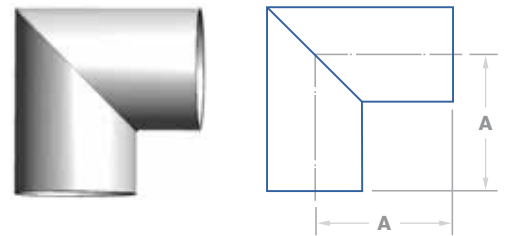
90° Elbow Extended Tangent



Part Number
V*-2L-W04
V*-2L-W05
V*-2L-W07
V*-2L-W10
V*-2L-W12
V*-2L-W14
V*-2L-W18

Dimensions in Inches & Millimeters			
Nominal Size		A	
inch	mm	inch	mm
3/4"	19.05	3.000	76.20
1"	25.40	3.000	76.20
1-1/2"	38.10	4.500	114.30
2"	50.80	5.750	146.05
2-1/2"	63.50	5.188	131.78
3"	76.20	6.313	160.35
4"	101.60	8.313	211.15

90° Elbow Mitered No Tangent



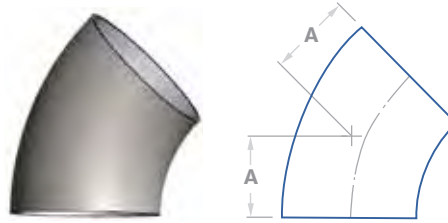
Part Number
V*-2M-W04
V*-2M-W05
V*-2M-W07
V*-2M-W10
V*-2M-W12
V*-2M-W14
V*-2M-W18
V*-2M-W26

Dimensions in Inches & Millimeters			
Nominal Size		A	
inch	mm	inch	mm
3/4"	19.05	1.000	25.40
1"	25.40	1.880	47.75
1-1/2"	38.10	2.250	57.15
2"	50.80	3.000	76.20
2-1/2"	63.50	3.000	76.20
3"	76.20	3.250	82.55
4"	101.60	4.870	123.70
6"	152.40	5.000	127.00

* To include part number material & finish options please reference configurator on pages #120 – 121



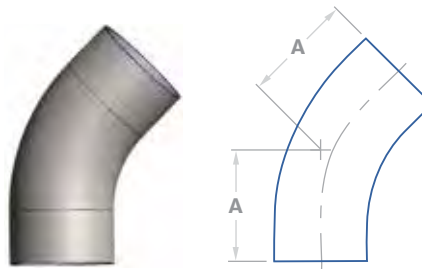
45° Elbow No Tangent



Part Number
V*-2K-W04
V*-2K-W05
V*-2K-W07
V*-2K-W10
V*-2K-W12
V*-2K-W14
V*-2K-W18
V*-2K-W26

Dimensions in Inches & Millimeters			
Nominal Size		A	
inch	mm	inch	mm
3/4"	19.05	0.469	11.913
1"	25.40	0.625	15.88
1-1/2"	38.10	0.938	23.83
2"	50.80	1.250	31.75
2-1/2"	63.50	1.563	39.70
3"	76.20	1.875	47.63
4"	101.60	2.500	63.50
6"	152.40	3.750	95.25

45° Elbow with Tangent



Part Number
V*-2N-W04
V*-2N-W05
V*-2N-W07
V*-2N-W10
V*-2N-W12
V*-2N-W14
V*-2N-W18

Dimensions in Inches & Millimeters			
Nominal Size		A	
inch	mm	inch	mm
3/4"	19.05	2.250	57.15
1"	25.40	1.188	30.18
1-1/2"	38.10	1.625	41.28
2"	50.80	2.313	58.75
2-1/2"	63.50	3.000	76.20
3"	76.20	3.688	93.68
4"	152.40	4.813	122.25

* To include part number material & finish options please reference configurator on pages #120 - 121

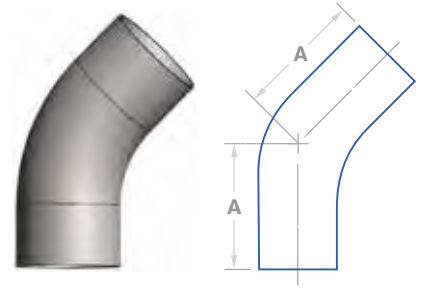


Valex

Vacuum
Components

Buttweld Elbows

45° Elbow with Extended Tangent



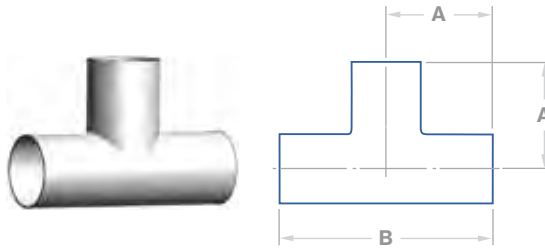
Part Number
V*-2E-W04
V*-2E-W05
V*-2E-W07
V*-2E-W10
V*-2E-W12
V*-2E-W14
V*-2E-W18

Dimensions in Inches & Millimeters				
Nominal Size		A		
inch	mm	inch	mm	
3/4"	19.05	2.250	57.15	
1"	25.40	2.250	57.15	
1-1/2"	38.10	3.000	76.20	
2"	50.80	3.250	82.55	
2-1/2"	63.50	3.625	92.08	
3"	76.20	3.688	93.68	
4"	101.60	4.813	122.25	

* To include part number material & finish options please reference configurator on pages #120 – 121



Equal Tee



Part Number
V*-7-W04
V*-7-W05
V*-7-W07
V*-7-W10
V*-7-W12
V*-7-W14
V*-7-W18
V*-7-W26

Dimensions in Inches & Millimeters						
Nominal Size		A		B		
inch	mm	inch	mm	inch	mm	
3/4"	19.05	1.875	47.63	3.750	95.25	
1"	25.40	1.875	47.63	3.750	95.25	
1-1/2"	38.10	2.250	57.15	4.500	114.30	
2"	50.80	3.000	76.20	6.000	152.40	
2-1/2"	63.50	3.000	76.20	6.000	152.40	
3"	76.20	3.250	82.55	6.500	165.10	
4"	101.60	3.875	98.43	7.750	196.85	
6"	152.40	5.000	127.00	10.000	254.00	

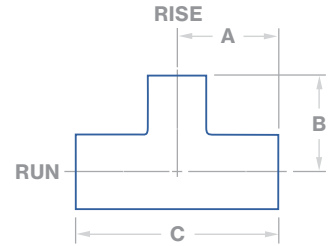
* To include part number material & finish options please reference configurator on pages #120 - 121



Valex
Vacuum
Components

Buttweld Tees

Reducing Tee



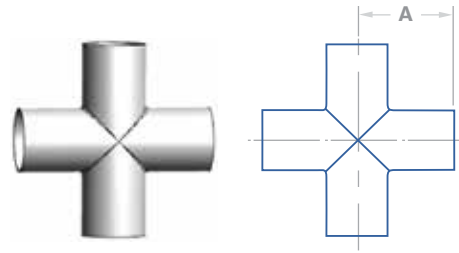
Part Number
V*-7R-W05X04
V*-7R-W07X04
V*-7R-W07X05
V*-7R-W10X04
V*-7R-W10X05
V*-7R-W10X07
V*-7R-W12X07
V*-7R-W12X10
V*-7R-W14X07
V*-7R-W14X10
V*-7R-W14X12
V*-7R-W18X10
V*-7R-W18X12
V*-7R-W18X14
V*-7R-W26X14
V*-7R-W26X18

Dimensions in Inches				
Nominal Size		A	B	C
RUN	RISE			
1"	3/4"	1.875	2.125	3.750
1-1/2"	3/4"	2.250	2.250	4.500
1-1/2"	1"	2.250	2.375	4.500
2"	3/4"	3.000	2.375	6.000
2"	1"	3.000	2.375	6.000
2"	1-1/2"	3.000	2.500	6.000
2-1/2"	1-1/2"	3.000	2.750	6.000
2-1/2"	2"	3.000	3.250	6.000
3"	1-1/2"	3.250	3.000	6.500
3"	2"	3.250	3.500	6.500
3"	2-1/2"	3.250	3.250	6.500
4"	2"	3.875	4.000	7.750
4"	2-1/2"	3.875	3.750	7.750
4"	3"	3.875	3.750	7.750
6"	3"	5.000	4.750	10.000
6"	4"	5.000	4.875	10.000

Part Number
V*-7R-W05X04
V*-7R-W07X04
V*-7R-W07X05
V*-7R-W10X04
V*-7R-W10X05
V*-7R-W10X07
V*-7R-W12X07
V*-7R-W12X10
V*-7R-W14X07
V*-7R-W14X10
V*-7R-W14X12
V*-7R-W18X10
V*-7R-W18X12
V*-7R-W18X14
V*-7R-W26X14
V*-7R-W26X18

Dimensions in Millimeters				
Nominal Size		A	B	C
RUN	RISE			
25.40	19.05	47.63	53.98	95.25
38.10	19.05	57.15	57.15	114.30
38.10	25.40	57.15	60.33	114.30
50.80	19.05	76.20	60.33	152.40
50.80	25.40	76.20	60.33	152.40
50.80	38.10	76.20	63.50	152.40
63.50	38.10	76.20	69.85	152.40
63.50	50.80	76.20	82.55	152.40
76.20	38.10	82.55	76.20	165.10
76.20	50.80	82.55	88.90	165.10
76.20	63.50	82.55	82.55	165.10
101.60	50.80	98.43	101.60	196.85
101.60	63.50	98.43	95.25	196.85
101.60	76.20	98.43	95.25	196.85
152.40	76.20	127.00	120.65	254.00
152.40	101.60	127.00	123.83	254.00

* To include part number material & finish options please reference configurator on pages #120 - 121



4-Way Cross

Part Number	Dimensions in Inches & Millimeters			
	Nominal Size		A	
	inch	mm	inch	mm
V*-9-W04	3/4"	19.05	1.875	47.63
V*-9-W05	1"	25.40	1.875	47.63
V*-9-W07	1-1/2"	38.10	2.250	57.15
V*-9-W10	2"	50.80	3.000	76.20
V*-9-W12	2-1/2"	63.50	3.000	76.20
V*-9-W14	3"	76.20	3.250	82.55
V*-9-W18	4"	101.60	3.875	98.43
V*-9-W26	6"	152.40	5.000	127.00

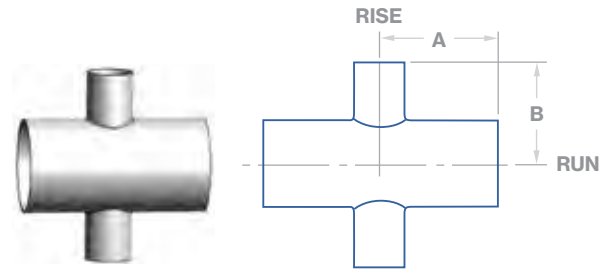
* To include part number material & finish options please reference configurator on pages #120 - 121



Valex
Vacuum
Components

Buttweld Crosses

4-Way Reducing Cross



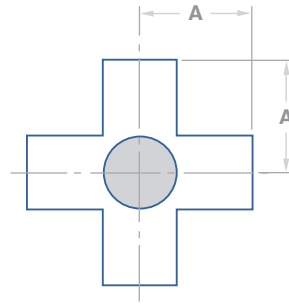
Part Number	Dimensions in Inches			
	Nominal Size		A	B
	RUN	RISE		
V*-9R-W05X04	1"	3/4"	1.880	1.120
V*-9R-W07X04	1-1/2"	3/4"	2.250	1.380
V*-9R-W07X04	1-1/2"	1"	2.250	2.130
V*-9R-W10X04	2"	3/4"	3.000	1.630
V*-9R-W10X07	2"	1-1/2"	3.000	2.500
V*-9R-W12X07	2-1/2"	1-1/2"	3.000	2.750
V*-9R-W12X10	2-1/2"	2"	3.000	3.250
V*-9R-W14X07	3"	1-1/2"	3.250	3.000
V*-9R-W18X07	4"	1-1/2"	3.880	3.500
V*-9R-W18X10	4"	2"	3.880	4.000
V*-9R-W18X12	4"	2-1/2"	3.880	3.750
V*-9R-W18X14	4"	3"	3.880	3.750
V*-9R-W26X04	6"	1-1/2"	5.000	4.500
V*-9R-W26X10	6"	2"	5.000	5.000
V*-9R-W26X12	6"	2-1/2"	5.000	4.750
V*-9R-W26X14	6"	3"	5.000	4.750
V*-9R-W26X18	6"	4"	5.000	4.880

Part Number	Dimensions in Millimeters			
	Nominal Size		A	B
	RUN	RISE		
V*-9R-W05X04	25.40	19.05	47.75	28.45
V*-9R-W07X04	38.10	19.05	57.15	35.05
V*-9R-W07X04	38.10	25.40	57.15	54.10
V*-9R-W10X04	50.80	19.05	76.20	41.40
V*-9R-W10X07	50.80	38.10	76.20	63.50
V*-9R-W12X07	63.50	38.10	76.20	69.85
V*-9R-W12X10	63.50	50.80	76.20	82.55
V*-9R-W14X07	76.20	38.10	82.55	76.20
V*-9R-W18X07	101.60	38.10	98.55	88.90
V*-9R-W18X10	101.60	50.80	98.55	101.60
V*-9R-W18X12	101.60	63.50	98.55	95.25
V*-9R-W18X14	101.60	76.20	98.55	95.25
V*-9R-W26X04	152.40	38.10	127.00	114.30
V*-9R-W26X10	152.40	50.80	127.00	127.00
V*-9R-W26X12	152.40	63.50	127.00	120.65
V*-9R-W26X14	152.40	76.20	127.00	120.65
V*-9R-W26X18	152.40	101.60	127.00	123.95

* To include part number material & finish options please reference configurator on pages #120 – 121



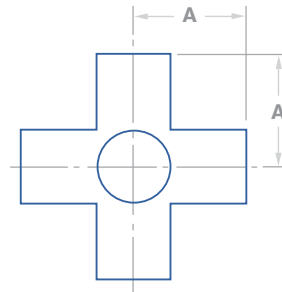
5-Way Cross



Part Number
V*-9F-W04
V*-9F-W05
V*-9F-W07
V*-9F-W10
V*-9F-W12
V*-9F-W14
V*-9F-W18
V*-9F-W26

Dimensions in Inches & Millimeters			
Nominal Size		A	
inch	mm	inch	mm
3/4"	19.05	1.000	25.40
1"	25.40	1.880	47.75
1-1/2"	38.10	2.250	57.15
2"	50.80	3.000	76.20
2-1/2"	63.50	3.000	76.20
3"	76.20	3.250	82.55
4"	101.60	3.880	98.55
6"	152.40	5.000	127.00

6-Way Cross



Part Number
V*-9S-W04
V*-9S-W05
V*-9S-W07
V*-9S-W10
V*-9S-W12
V*-9S-W14
V*-9S-W18
V*-9S-W26

Dimensions in Inches & Millimeters			
Nominal Size		A	
inch	mm	inch	mm
3/4"	19.05	1.000	25.40
1"	25.40	1.880	47.75
1-1/2"	38.10	2.250	57.15
2"	50.80	3.000	76.20
2-1/2"	63.50	3.000	76.20
3"	76.20	3.250	82.55
4"	101.60	3.880	98.55
6"	152.40	5.000	127.00

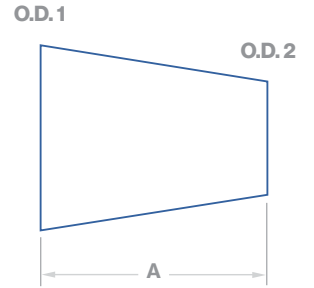
* To include part number material & finish options please reference configurator on pages #120 - 121



Valex

Vacuum
Components

Buttweld Reducers



Concentric Reducer

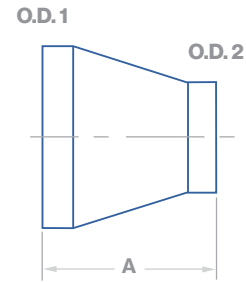
Part Number	Dimensions in Inches & Millimeters					
	O.D.1		O.D.2		A	
	inch	mm	inch	mm	inch	mm
V*-31-W04X03	3/4"	19.05	1/2"	12.70	1.000	25.40
V*-31-W05X03	1"	25.40	1/2"	12.70	1.500	38.10
V*-31-W05X04	1"	25.40	3/4"	19.05	1.000	25.40
V*-31-W07X03	1-1/2"	38.10	1/2"	12.70	3.500	88.90
V*-31-W07X04	1-1/2"	38.10	3/4"	19.05	3.000	76.20
V*-31-W07X05	1-1/2"	38.10	1"	25.40	2.000	50.80
V*-31-W10X05	2"	50.80	1"	25.40	4.000	101.60
V*-31-W10X07	2"	50.80	1-1/2"	38.10	2.000	50.80
V*-31-W12X07	2-1/2"	63.50	1-1/2"	38.10	4.000	101.60
V*-31-W12X10	2-1/2"	63.50	2"	50.80	2.000	50.80
V*-31-W14X07	3"	76.20	1-1/2"	38.10	6.000	152.40
V*-31-W14X10	3"	76.20	2"	50.80	4.000	101.60
V*-31-W14X12	3"	76.20	2-1/2"	63.50	2.000	50.80
V*-31-W18X07	4"	101.60	1-1/2"	38.10	10.000	254.00
V*-31-W18X10	4"	101.60	2"	50.80	8.000	203.20
V*-31-W18X12	4"	101.60	2-1/2"	63.50	6.000	152.40
V*-31-W18X14	4"	101.60	3"	76.20	4.000	101.60
V*-31-W26X14	6"	152.40	3"	76.20	6.000	152.40
V*-31-W26X18	6"	152.40	4"	101.60	4.000	101.60

* To include part number material & finish options please reference configurator on pages #120 – 121



Valex
Vacuum
Components

Concentric Reducer with Tangents



Part Number	Dimensions in Inches & Millimeters					
	O.D. 1		O.D. 2		A	
	inch	mm	inch	mm	inch	mm
V*-31T-W05X04	1"	25.40	3/4"	19.05	2.375	60.33
V*-31T-W07X05	1-1/2"	38.10	1"	25.40	2.375	60.33
V*-31T-W10X05	2"	50.80	1"	25.40	2.375	60.33
V*-31T-W10X07	2"	50.80	1-1/2"	38.10	2.375	60.33
VV*-31T-W12X07	2-1/2"	63.50	1-1/2"	38.10	2.375	60.33
V*-31T-W12X10	2-1/2"	63.50	2"	50.80	2.375	60.33
V*-31T-W14X07	3"	76.20	1-1/2"	38.10	3.625	92.08
V*-31T-W14X10	3"	76.20	2"	50.80	3.625	92.08
V*-31T-W14X12	3"	76.20	2-1/2"	63.50	3.625	92.08
V*-31T-W18X07	4"	101.60	1-1/2"	38.10	5.500	139.70
V*-31T-W18X10	4"	101.60	2"	50.80	3.625	92.08
V*-31T-W18X12	4"	101.60	2-1/2"	63.50	3.625	92.08
V*-31T-W18X14	4"	101.60	3"	76.20	3.625	92.08
V*-31T-W26X14	6"	152.40	3"	76.20	5.500	139.70
V*-31T-W26X18	6"	152.40	4"	101.60	5.500	139.70

Buttweld Reducers

* To include part number material & finish options please reference configurator on pages #120 - 121



Valex

Vacuum
Components

Buttweld Caps

Weld Cap



Part Number
V*-16-W04
V*-16-W05
V*-16-W07
V*-16-W10
V*-16-W12
V*-16-W14
V*-16-W18
V*-16-W26

Dimensions in Inches & Millimeters				
Nominal Size		A		
inch	mm	inch	mm	
3/4"	19.05	0.313	7.95	
1"	25.40	0.469	11.91	
1-1/2"	38.10	0.594	15.09	
2"	50.80	0.781	19.84	
2-1/2"	63.50	1.063	27.00	
3"	76.20	1.094	27.79	
4"	101.60	1.281	32.54	
6"	152.40	2.125	53.98	

* To include part number material & finish options please reference configurator on pages #120 – 121

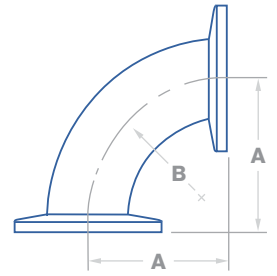


Valex

Vacuum Components

NW Elbows

NW 90° Elbow



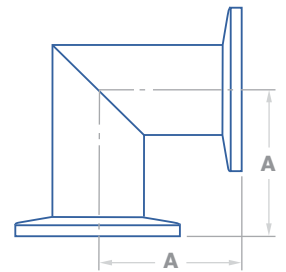
Part Number
V*-2-N1A
V*-2-N1B
V*-2-N1C
V*-2-N1D
V*-2T-N1D
V*-2L-N1D
V*-2-N1E
V*-2T-N1E

Dimensions in Inches				
Flange Size	Tube O.D.	A	B	
NW				
10	1/2"	1.25	0.75	
16	3/4"	1.15	1.00	
25	1"	1.65	1.50	
40	1-1/2"	2.40	2.25	
40	1-1/2"	2.56	2.25	
40	1-1/2"	5.12	2.25	
50	2"	3.15	3.00	
50	2"	5.51	3.00	

Part Number
V*-2-N1A
V*-2-N1B
V*-2-N1C
V*-2-N1D
V*-2T-N1D
V*-2L-N1D
V*-2-N1E
V*-2T-N1E

Dimensions in Millimeters				
Size	Tube O.D.	A	B	
NW				
10	12.70	31.75	19.05	
16	19.05	29.21	25.40	
25	25.40	41.91	38.10	
40	38.10	60.96	57.15	
40	38.10	65.02	57.15	
40	38.10	130.05	57.15	
50	50.80	80.01	76.20	
50	50.80	139.95	76.20	

NW 90° Mitered Elbow No Tangent



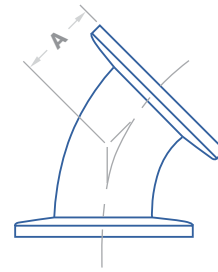
Part Number
V*-2M-N1B
V*-2M-N1C
V*-2M-N1D
V*-2X-N1D
V*-2M-N1E
V*-2X-N1E

Dimensions in Inches & Millimeters				
Size	Tube O.D.		A	
	inch	mm	inch	mm
16	3/4"	19.05	1.15	29.21
25	1"	25.40	2.03	51.56
40	1-1/2"	38.10	2.40	60.96
40	1-1/2"	38.10	2.56	65.02
50	2"	50.80	2.76	70.10
50	2"	50.80	3.15	80.01

* To include part number material & finish options please reference configurator on pages #120 – 121

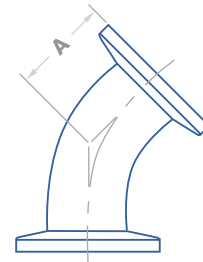


NW 45° Elbow No Tangent



Part Number	Dimensions in Inches & Millimeters				
	Size	Tube O.D.		A	
	NW	inch	mm	inch	mm
V*-2K-N1C	25	1"	25.40	0.77	19.56
V*-2K-N1D	40	1-1/2"	38.10	1.08	27.43
V*-2K-N1E	50	2"	50.80	1.39	35.31

NW 45° Elbow With Tangent



Part Number	Dimensions in Inches & Millimeters				
	Size	Tube O.D.		A	
	NW	inch	mm	inch	mm
V*-2N-N1B	16	3/4"	19.05	0.91	23.11
V*-2N-N1C	25	1"	25.40	1.12	28.45
V*-2N-N1D	40	1-1/2"	38.10	1.68	42.67
V*-2N-N1E	50	2"	50.80	1.99	50.55

* To include part number material & finish options please reference configurator on pages #120 - 121

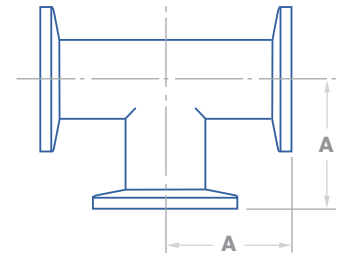


Valex

Vacuum Components

NW Tees

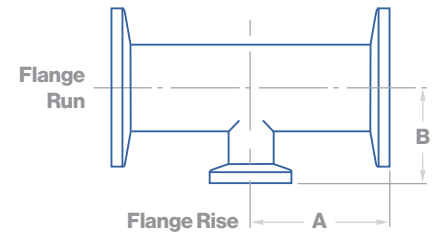
NW Equal Tee



Part Number
V*-7-N1A
V*-7-N1B
V*-7-N1C
V*-7-N1C
V*-7L-N1C
V*-7-N1E
V*-7L-N1E

Dimensions in Inches & Millimeters				
Size	Tube O.D.		A	
	inch	mm	inch	mm
10	1/2"	12.70	1.25	31.75
16	3/4"	19.05	1.15	29.21
25	1"	25.40	2.03	51.56
40	1-1/2"	38.10	2.40	60.96
40	1-1/2"	38.10	2.56	65.02
50	2"	50.80	2.76	70.10
50	2"	50.80	3.15	80.01

NW Reducing Tee



Part Number
V*-7R-K1CX1B
V*-7R-K1DX1B
V*-7R-K1CX1C
V*-7R-K1EX1B
V*-7R-K1EX1D

Dimensions in Inches					
Size Run	Size Rise	Tube Run O.D.	Tube Rise O.D.	A	B
NW	NW				
25	16	1"	3/4"	2.03	1.27
40	16	1-1/2"	3/4"	2.40	1.53
40	25	1-1/2"	1"	2.40	2.28
50	16	2"	3/4"	3.15	1.78
50	40	2"	1-1/2"	3.15	2.65

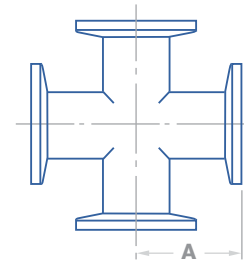
Part Number
V*-7R-N1CX1B
V*-7R-N1DX1B
V*-7R-N1CX1C
V*-7R-N1EX1B
V*-7R-N1EX1D

Dimensions in Millimeters					
Size Run	Size Rise	Tube Run O.D.	Tube Rise O.D.	A	B
NW	NW				
25	16	25.40	19.05	51.56	32.26
40	16	38.10	19.05	60.96	38.86
40	25	38.10	25.40	60.96	57.91
50	16	2"	3/4"	3.15	1.78
50	16	50.80	19.05	80.01	45.21

* To include part number material & finish options please reference configurator on pages #120 – 121



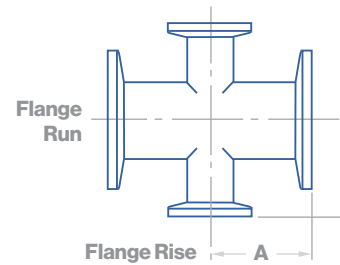
NW 4-Way Cross



Part Number
V*-9-N1A
V*-9-N1B
V*-9-N1C
V*-9-N1D
V*-9L-N1D
V*-9-N1E
V*-9L-N1E

Dimensions in Inches & Millimeters					
Size	Tube O.D.		A		
	inch	mm	inch	mm	
10	1/2"	12.70	1.25	31.75	
16	3/4"	19.05	1.15	29.21	
25	1"	25.40	2.03	51.56	
40	1-1/2"	38.10	2.40	60.96	
40	1-1/2"	38.10	2.56	65.02	
50	2"	50.80	2.76	70.10	
50	2"	50.80	3.15	80.01	

NW 4-Way Reducing Cross



Part Number
V*-9R-N1CX1B
V*-9R-N1DX1B
V*-9R-N1DX1C
V*-9R-N1EX1B
V*-9R-N1EX1D

Dimensions in Inches						
Run Size	Rise Size	Tube Run O.D.	Tube Rise O.D.	A	B	
NW	NW					
25	16	1"	3/4"	2.03	1.27	
40	16	1-1/2"	3/4"	2.40	1.53	
40	25	1-1/2"	1"	2.40	2.28	
50	16	2"	3/4"	3.15	1.78	
50	40	2"	1-1/2"	3.15	2.65	

Part Number
V*-9R-N1CX1B
V*-9R-N1DX1B
V*-9R-N1DX1C
V*-9R-N1EX1B
V*-9R-N1EX1D

Dimensions in Millimeters						
Run Size	Rise Size	Tube Run O.D.	Tube Rise O.D.	A	B	
NW	NW					
25	16	25.40	19.05	51.56	32.26	
40	16	38.10	19.05	60.96	38.86	
40	25	38.10	25.40	60.96	57.91	
50	16	50.80	19.05	80.01	45.21	
50	40	50.80	38.10	80.01	67.31	

* To include part number material & finish options please reference configurator on pages #120 - 121

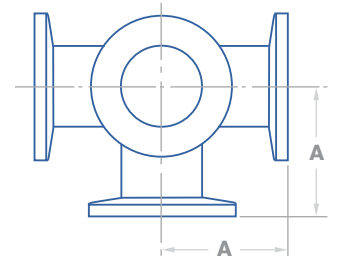


Valex

Vacuum Components

NW Crosses

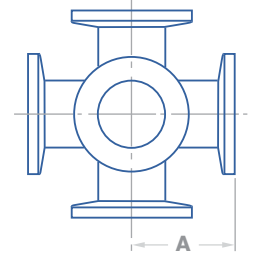
5th Leg Opposite



NW 5-Way Cross

Part Number	Dimensions in Inches & Millimeters				
	Size	Tube O.D.		A	
		NW	inch	mm	inch
V*-9F-N1B	16	3/4"	19.05	1.50	38.10
V*-9F-N1C	25	1"	25.40	2.03	51.56
V*-9F-N1D	40	1-1/2"	38.10	2.40	60.96
V*-9F-N1E	50	2"	50.80	3.15	80.01

6th Leg Opposite

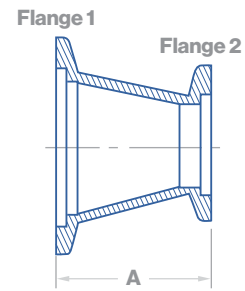


NW 6-Way Cross

Part Number	Dimensions in Inches & Millimeters				
	Size	Tube O.D.		A	
		NW	inch	mm	inch
V*-9S-N1A	16	3/4"	19.05	1.50	38.10
V*-9S-N1C	25	1"	25.40	2.03	51.56
V*-9S-N1D	40	1-1/2"	38.10	2.40	60.96
V*-9S-N1E	50	2"	50.80	3.15	80.01

* To include part number material & finish options please reference configurator on pages #120 – 121

NW Concentric Reducer

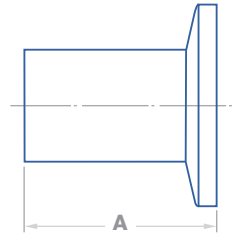


Valex
Vacuum
Components

NW Reducers

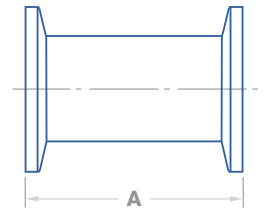
Part Number	Dimensions in Inches & Millimeters					
	Flange 1		Flange 2		A	
	NW	inch	NW	inch	inch	mm
V*-31-N1CX1B	25	1"	16	3/4"	1.57	39.88
V*-31-N1DX1B	40	1-1/2"	16	3/4"	1.57	39.88
V*-31-N1DX1C	40	1-1/2"	25	1"	1.57	39.88
V*-31-N1EX1B	50	2"	16	3/4"	1.57	39.88
V*-31-N1EX1C	50	2"	25	1"	1.57	39.88
V*-31-N1EX1D	50	2"	40	1-1/2"	1.57	39.88

* To include part number material & finish options please reference configurator on pages #120 - 121



NW Half Nipple

Part Number	Dimensions in Inches & Millimeters				
	Size	Tube O.D.		A	
	NW	inch	mm	inch	mm
V*-6H-N1A	10	1/2"	12.70	1.25	31.75
V*-6H-N1B	16	3/4"	19.05	1.15	29.21
V*-6H-N1C	25	1"	25.40	2.03	51.56
V*-6H-N1D	40	1-1/2"	38.10	2.40	60.96
V*-6H-N1E	50	2"	50.80	3.15	80.01

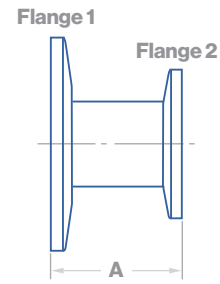


NW Full Nipple

Part Number	Dimensions in Inches & Millimeters				
	Size	Tube O.D.		A	
	NW	inch	mm	inch	mm
V*-6F-N1A	10	1/2"	12.70	2.50	63.50
V*-6F-N1B	16	3/4"	19.05	2.30	58.42
V*-6F-N1C	25	1"	25.40	4.06	103.12
V*-6F-N1D	40	1-1/2"	38.10	4.80	121.92
V*-6F-N1E	50	2"	50.80	6.30	160.02

* To include part number material & finish options please reference configurator on pages #120 – 121

NW Straight Reducer



Part Number	Dimensions in Inches & Millimeters					
	Flange 1	Flange 2	Tube O.D.		A	
	NW	NW	inch	mm	inch	mm
V*-31S-N1BX1A	16	10	1/2"	12.70	1.40	35.56
V*-31S-N1CX1A	25	10	1/2"	12.70	1.40	35.56
V*-31S-N1CX1B	25	16	3/4"	19.05	1.30	33.02
V*-31S-N1DX1A	40	10	1/2"	12.70	1.40	35.56
V*-31S-N1DX1B	40	16	3/4"	19.05	1.30	33.02
V*-31S-N1DX1C	40	25	1"	25.40	2.18	55.37
V*-31S-N1EX1A	50	10	1/2"	12.70	1.40	35.56
V*-31S-N1EX1B	50	16	3/4"	19.05	1.30	33.02
V*-31S-N1EX1C	50	25	1"	25.40	2.18	55.37
V*-31S-N1EX1D	50	40	1-1/2"	38.10	2.55	64.77

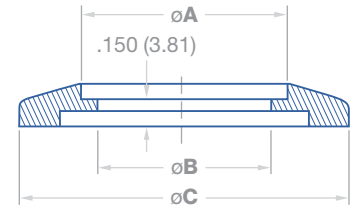
* To include part number material & finish options please reference configurator on pages #120 - 121



Valex

Vacuum Components

NW Flanges

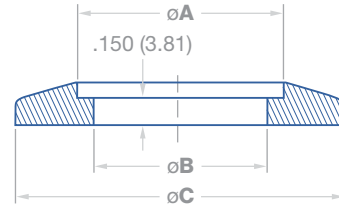


NW Bored Flange

Part Number	Dimensions in Inches				
	Flange Size	Tube O.D.	A	B	C
	NW	inch			
V*-38B-N1AX02	10	3/8"	0.38	0.33	1.18
V*-38B-N1AX03	10	1/2"	0.51	0.45	1.18
V*-38B-N1BX02	16	3/8"	0.38	0.33	1.18
V*-38B-N1BX03	16	1/2"	0.51	0.45	1.18
V*-38B-N1CX02	25	3/8"	0.38	0.33	1.58
V*-38B-N1CX03	25	1/2"	0.51	0.45	1.58
V*-38B-N1CX04	25	3/4"	0.76	0.72	1.58
V*-38B-N1CX05	25	1"	1.01	0.94	1.58
V*-38B-N1DX02	40	3/8"	0.38	0.33	2.16
V*-38B-N1DX03	40	1/2"	0.51	0.45	2.16
V*-38B-N1DX04	40	3/4"	0.76	0.72	2.16
V*-38B-N1DX05	40	1"	1.01	0.94	2.16
V*-38B-N1DX07	40	1-1/2"	1.51	1.44	2.16
V*-38B-N1EX02	50	3/8"	0.38	0.33	2.95
V*-38B-N1EX03	50	1/2"	0.51	0.45	2.95
V*-38B-N1EX04	50	3/4"	0.76	0.72	2.95
V*-38B-N1EX05	50	1"	1.01	0.94	2.95
V*-38B-N1EX07	50	1-1/2"	1.51	1.44	2.95
V*-38B-N1EX10	50	2"	2.01	1.94	2.95

Part Number	Dimensions in Millimeters				
	Flange Size	Tube O.D.	A	B	C
	NW	mm			
V*-38B-N1AX02	10	9.53	9.65	8.28	29.97
V*-38B-N1AX03	10	12.70	12.95	11.46	29.97
V*-38B-N1BX02	16	9.53	9.65	8.28	29.97
V*-38B-N1BX03	16	12.70	12.95	11.46	29.97
V*-38B-N1CX02	25	9.53	9.65	8.28	40.01
V*-38B-N1CX03	25	12.70	12.95	11.46	40.01
V*-38B-N1CX04	25	19.05	19.30	18.16	40.01
V*-38B-N1CX05	25	25.40	25.65	23.83	40.01
V*-38B-N1DX02	40	9.53	9.65	8.28	54.86
V*-38B-N1DX03	40	12.70	12.95	11.46	54.86
V*-38B-N1DX04	40	19.05	19.30	18.16	54.86
V*-38B-N1DX05	40	25.40	25.65	23.83	54.86
V*-38B-N1DX07	40	38.10	38.35	36.53	54.86
V*-38B-N1EX02	50	9.53	9.65	8.28	74.93
V*-38B-N1EX03	50	12.70	12.95	11.46	74.93
V*-38B-N1EX04	50	19.05	19.30	18.16	74.93
V*-38B-N1EX05	50	25.40	25.65	23.83	74.93
V*-38B-N1EX07	50	38.10	38.35	36.53	74.93
V*-38B-N1EX10	50	50.80	51.05	49.23	74.93

* To include part number material & finish options please reference configurator on pages #120 – 121



NW Bored Flange

Part Number	Dimensions in Inches				
	Flange Size	Tube O.D.	A	B	C
	NW	inch			
V*-38B-N1BX04	16	3/4"	0.76	0.68	1.18

Part Number	Dimensions in Millimeters				
	Flange Size	Tube O.D.	A	B	C
	NW	mm			
V*-38B-N1BX04	16	19.05	19.30	17.27	29.97

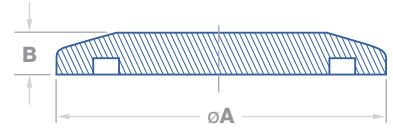
* To include part number material & finish options please reference configurator on pages #120 - 121



Valex

Vacuum Components

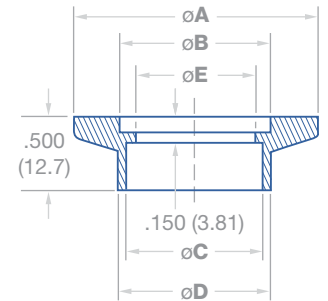
NW Flanges



NW Blank Flange

Part Number	Dimensions in Inches & Millimeters				
	Flange Size	A		B	
		NW	inch	mm	inch
V*-38-N1A	10	1.18	29.97	0.200	5.08
V*-38-N1B	16	1.18	29.97	0.200	5.08
V*-38-N1C	25	1.58	40.01	0.200	5.08
V*-38-N1D	40	2.16	54.86	0.200	5.08
V*-38-N1E	50	2.95	74.93	0.200	5.08

NW Socket Weld Bored Flange, Short



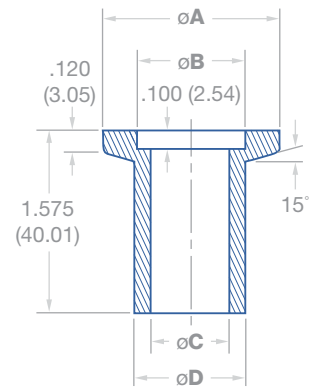
Part Number	Dimensions in Inches						
	Flange Size	Tube O.D.	A	B	C	D	E
V*-38S-N1A	10	1/2"	1.18	0.48	0.51	0.61	N/A
V*-38S-N1B	16	3/4"	1.18	0.68	0.76	0.80	N/A
V*-38S-N1C	25	1"	1.58	1.03	1.01	1.14	0.94
V*-38S-N1D	40	1-1/2"	2.16	1.62	1.51	1.64	1.44
V*-38S-N1E	50	2"	2.95	2.06	2.01	2.14	1.94

Part Number	Dimensions in Millimeters						
	Flange Size	Tube O.D.	A	B	C	D	E
V*-38S-N1A	10	12.70	29.97	12.19	12.95	15.49	N/A
V*-38S-N1B	16	19.05	29.97	17.27	19.30	20.27	N/A
V*-38S-N1C	25	25.40	40.01	26.19	25.65	28.96	23.83
V*-38S-N1D	40	38.10	54.86	41.15	38.35	41.66	36.53
V*-38S-N1E	50	50.80	74.93	52.32	51.05	54.36	49.23

* To include part number material & finish options please reference configurator on pages #120 – 121



NW Weld Neck Bored Flange, Long



Part Number	Dimensions in Inches				
	Flange Size NW	A	B	C	D
V*-38L-N1A	10	1.18	0.48	0.38	1/2"
V*-38L-N1B	16	1.18	0.68	0.63	3/4"
V*-38L-N1C	25	1.58	1.03	0.87	1"
V*-38L-N1D	40	2.16	1.62	1.37	1-1/2"
V*-38L-N1E	50	2.95	2.06	1.87	2"

Part Number	Dimensions in Millimeters				
	Flange Size NW	A	B	C	D
V*-38L-N1A	10	29.97	12.19	9.65	12.70
V*-38L-N1B	16	29.97	17.27	15.88	19.05
V*-38L-N1C	25	40.01	26.19	22.10	25.40
V*-38L-N1D	40	54.86	41.15	34.80	38.10
V*-38L-N1E	50	74.93	52.32	47.50	50.80

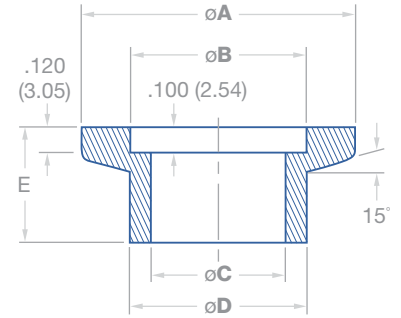
* To include part number material & finish options please reference configurator on pages #120 - 121



Valex
Vacuum
Components

NW Flanges

NW Weld Neck Bored Flange, Short



Part Number	Dimensions in Inches						
	Flange Size NW	Tube O.D. inch	A	B	C	D	E
V*-38N-N1A	10	1/2"	1.18	0.48	0.38	1/2	0.50
V*-38N-N1B	16	3/4"	1.18	0.68	0.63	0.75	0.56
V*-38N-N1C	25	1"	1.58	1.03	0.87	1.00	0.50
V*-38N-N1D	40	1-1/2"	2.16	1.62	1.37	1.50	0.75
V*-38N-N1E	50	2"	2.95	2.06	1.87	2.00	0.75

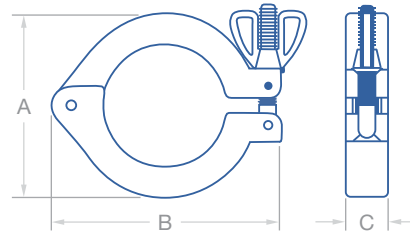
Part Number	Dimensions in Millimeters						
	Flange Size NW	Tube O.D. mm	A	B	C	D	E
V*-38N-N1A	10	12.70	29.97	12.19	9.65	12.70	12.70
V*-38N-N1B	16	19.05	29.97	17.27	15.88	19.05	14.22
V*-38N-N1C	25	25.40	40.01	26.19	22.10	25.40	12.70
V*-38N-N1D	40	38.10	54.86	41.15	34.80	38.10	19.05
V*-38N-N1E	50	50.80	74.93	52.32	47.50	50.80	19.05

* To include part number material & finish options please reference configurator on pages #120 – 121



NW Wing Nut Clamp

Aluminum with Single Wingnut Fastener

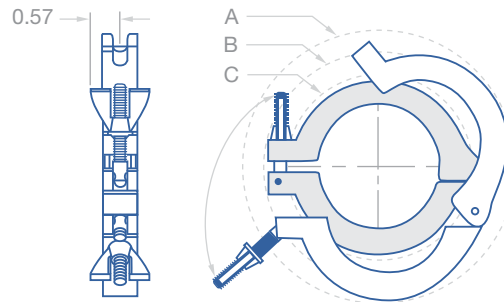


Part Number
Aluminum
VE-13W-N1A
VE-13W-N1B
VE-13W-N1C
VE-13W-N1D
VE-13W-N1E

Dimensions in Inches & Millimeters							
Flange Size	A		B		C		
	NW	inch	mm	inch	mm	inch	mm
10	1.69	42.93	2.39	60.76	0.63	15.88	
16	1.69	42.93	2.39	60.76	0.63	15.88	
25	2.14	54.36	2.80	71.02	0.63	15.88	
40	2.75	69.85	3.44	87.30	0.63	15.88	
50	3.50	88.90	4.25	107.82	0.71	18.03	

Clearance Details

(KF Blank Flange & KF Wing Nut Clamp)



Components	
Clamp	Flange
V*-13W-N1A	V*-38-N1A
V*-13W-N1B	V*-38-N1B
V*-13W-N1C	V*-38-N1C
V*-13W-N1D	V*-38-N1D
V*-13W-N1E	V*-38-N1E

Dimensions in Inches				
Clamp Size	Flange Size	A (Min. Diameter to Install)	B (Min. Diameter Closed)	C (Min. Diameter Closed)
NW	NW			
10	10	2.86	2.65	1.75
16	16	2.86	2.65	1.75
25	25	3.32	3.00	2.24
40	40	4.00	3.72	2.90
50	50	5.45	4.62	3.69

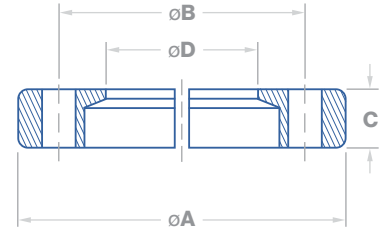
Components	
Clamp	Flange
V*-13W-N1A	V*-38-N1A
V*-13W-N1B	V*-38-N1B
V*-13W-N1C	V*-38-N1C
V*-13W-N1D	V*-38-N1D
V*-13W-N1E	V*-38-N1E

Dimensions in Millimeters				
Clamp Size	Flange Size	A (Min. Diameter to Install)	B (Min. Diameter Closed)	C (Min. Diameter Closed)
NW	NW			
10	10	72.64	67.31	44.45
16	16	72.64	67.31	44.45
25	25	84.33	76.20	56.90
40	40	101.60	94.49	73.66
50	50	138.43	117.35	93.73

* To include part number material & finish options please reference configurator on pages #120 - 121



NW Bulkhead Clamp



Part Number
V*-13B-N1B
V*-13B-N1C
V*-13B-N1D
V*-13B-N1E

Dimensions in Inches						
Flange Size	A	B	C	# of Screws	Through Hole D	
NW						
16	2.00	1.50	0.36	6	0.90	
25	2.37	1.89	0.39	6	1.26	
40	2.94	2.44	0.37	6	1.84	
50	3.75	3.25	0.40	8	2.35	

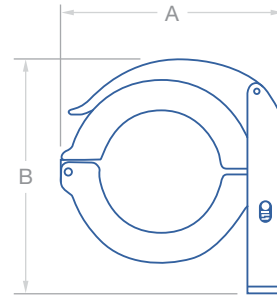
Part Number
V*-13B-N1B
V*-13B-N1C
V*-13B-N1D
V*-13B-N1E

Dimensions in Millimeters						
Flange Size	A	B	C	# of Screws	Through Hole D	
NW						
16	50.80	38.10	9.17	6	22.86	
25	60.20	48.01	9.83	6	32.00	
40	74.68	61.98	9.30	6	46.74	
50	95.25	82.55	10.26	8	59.69	

* To include part number material & finish options please reference configurator on pages #120 – 121



NW Quick Release Lever Clamp



Part Number
V*-13L-N1B
V*-13L-N1C
V*-13L-N1D
V*-13L-N1E

Dimensions in Inches			
Flange Size		A	B
NW	inch		
16	0.5 – 0.75	2.49	2.05
25	1.00	2.87	2.37
40	1.50	3.57	3.15
50	2.00	4.51	4.02

Part Number
V*-13L-N1B
V*-13L-N1C
V*-13L-N1D
V*-13L-N1E

Dimensions in Millimeters			
Flange Size		A	B
NW	inch		
16	12.7 – 19.1	63.3	52.0
25	25.4	73.0	60.3
40	38.1	90.6	80.0
50	50.8	114.5	102.0

* To include part number material & finish options please reference configurator on pages #120 – 121

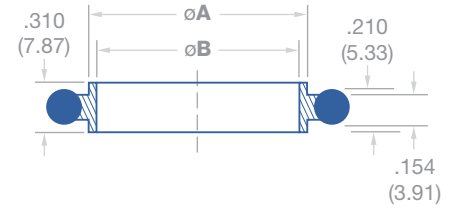


Valex

Vacuum
Components

NW Centering Rings

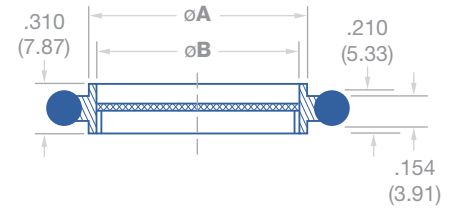
NW Centering Ring with O-ring



Part Number	Dimensions in Inches & Millimeters				
	Flange Size	A		B	
		NW	inch	mm	inch
V*-39C-N1A**	10	0.48	12.14	0.46	11.58
V*-39C-N1B**	16	0.67	16.99	0.63	15.88
V*-39C-N1C**	25	1.02	26.01	0.98	24.99
V*-39C-N1D**	40	1.61	41.00	1.57	39.88
V*-39C-N1E**	50	2.05	51.99	1.97	49.96

** See part number configurator for O-ring material options

NW Screened Centering Ring with O-ring



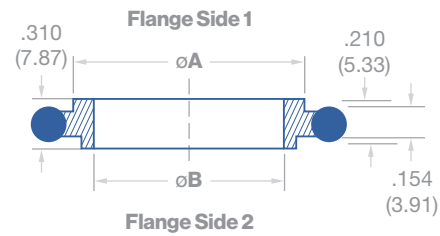
Part Number	Dimensions in Inches & Millimeters					
	Flange Size	A		B		Mesh
		NW	inch	mm	inch	
V*-39M-N1C**	25	1.02	26.01	0.98	24.99	74
V*-39M-N1D**	40	1.61	41.00	1.57	39.88	74
V*-39M-N1E**	50	2.05	51.99	1.97	49.96	74

** See part number configurator for O-ring material options

* To include part number material & finish options please reference configurator on pages #120 – 121



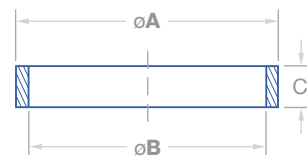
NW Reducing Centering Ring with O-ring



Part Number	Dimensions in Inches			
	Flange Side 1	Flange Side 2	A	B
	NW	NW		
V*-39L-N1BX1A	16	10	0.67	0.48
V*-39L-N1CX1F	25	20	1.02	0.87
V*-39L-N1CX1G	40	32	1.61	1.34

Part Number	Dimensions in Millimeters			
	Flange Side 1	Flange Side 2	A	B
	NW	NW		
V*-39L-N1BX1A	10	16	12.19	17.02
V*-39L-N1CX1F	20	25	22.10	25.91
V*-39L-N1CX1G	32	40	34.04	40.89

NW Over Pressure Ring



Part Number	Dimensions in Inches & Millimeters						
	Flange Size	A		B		C	
		inch	mm	inch	mm	inch	mm
V*-39O-N1A	10	1.25	31.75	1.19	30.12	0.35	8.79
V*-39O-N1B	16	1.25	31.75	1.19	30.12	0.35	8.79
V*-39O-N1C	25	1.66	42.16	1.58	40.21	0.35	8.79
V*-39O-N1D	40	2.25	57.15	2.17	55.09	0.35	8.79
V*-39O-N1E	50	2.75	69.85	2.62	66.55	0.15	3.68

* To include part number material & finish options please reference configurator on pages #120 - 121

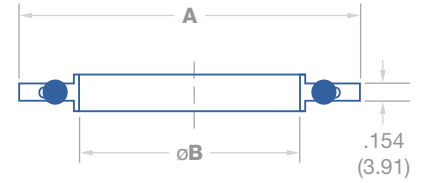


Valex

Vacuum
Components

NW Centering Rings

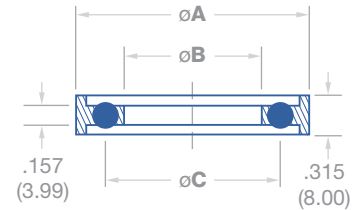
NW Centering Ring with O-ring & Overpressure Ring Assembly



Part Number	Dimensions in Inches & Millimeters				
	Flange Size	A		B	
		NW	inch	mm	inch
V*-39E-N1B	16	1.25	31.75	0.63	15.88
V*-39E-N1C	25	1.66	42.16	0.98	24.99
V*-39E-N1D	40	2.25	57.15	1.57	39.88
V*-39E-N1E	50	2.75	69.85	1.97	49.96

** See part number configurator for O-ring material options

NW Capture Centering Ring with O-ring & Assembly



Part Number	Dimensions in Inches & Millimeters						
	Flange Size	A		B		C	
		NW	inch	mm	inch	mm	inch
V*39F-N1A	10	1.18	29.97	0.63	16.00	0.91	23.11
V*39F-N1B	16	1.18	29.97	0.63	16.00	0.91	23.11
V*39F-N1C	25	1.58	40.13	0.95	24.13	1.30	33.02
V*39F-N1D	40	2.17	55.12	1.58	40.13	1.89	48.01
V*39F-N1E	50	2.95	74.93	1.97	50.04	2.32	58.93

** See part number configurator for O-ring material options

O-ring O-ring options

See part number configurator for O-ring material options

* To include part number material & finish options please reference configurator on pages #120 – 121

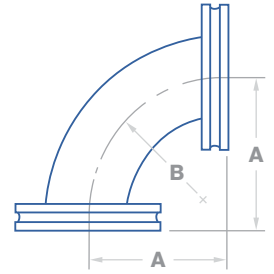


Valex

Vacuum
Components

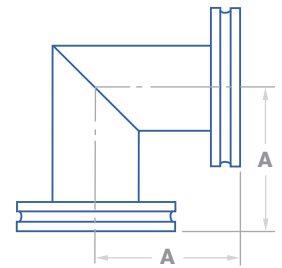
ISO Elbows

ISO-K 90° Elbow No Tangent



Part Number	Dimensions in Inches & Millimeters						
	Size	Tube O.D.		A		B	
	ISO	inch	mm	inch	mm	inch	mm
V*-2-K3A	63	2-1/2"	63.50	4.00	101.60	3.75	95.25
V*-2-K3B	80	3"	76.20	4.75	120.65	4.50	114.30
V*-2-K3C	100	4"	101.60	6.25	158.75	6.00	152.40
V*-2-K3D	160	6"	152.40	9.38	238.25	9.00	228.60
V*-2-K3E	200	8"	203.20	12.38	314.45	12.00	304.80
V*-2-K3F	250	10"	254.00	15.38	390.65	15.00	381.00

ISO-K 90° Mitered Elbow No Tangent



Part Number	Dimensions in Inches & Millimeters				
	Size	Tube O.D.		A	
	ISO	inch	mm	inch	mm
V*-2M-K3A	63	2-1/2"	63.50	3.25	82.55
V*-2M-K3B	80	3"	76.20	3.50	88.90
V*-2M-K3C	100	4"	101.60	4.13	104.90
V*-2M-K3D	160	6"	152.40	5.38	136.65
V*-2M-K3E	200	8"	203.20	7.38	187.45
V*-2M-K3F	250	10"	254.00	9.88	250.95

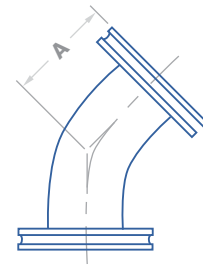
* To include part number material & finish options please reference configurator on pages #120 – 121



Valex
Vacuum
Components

ISO-K 45° Elbow

With Tangent



Part Number	Dimensions in Inches & Millimeters				
	Size	Tube O.D.		A	
	ISO	inch	mm	inch	mm
V*-2N-K3A	63	2-1/2"	63.50	3.25	82.55
V*-2N-K3B	80	3"	76.20	3.39	99.82
V*-2N-K3C	100	4"	101.60	5.03	127.76

ISO Elbows

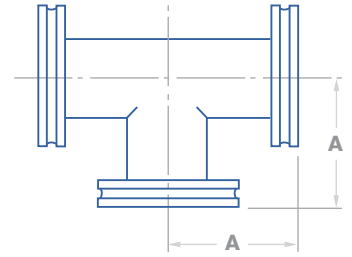
* To include part number material & finish options please reference configurator on pages #120 - 121



Valex
Vacuum
Components

ISO Tees

ISO-K Equal Tee



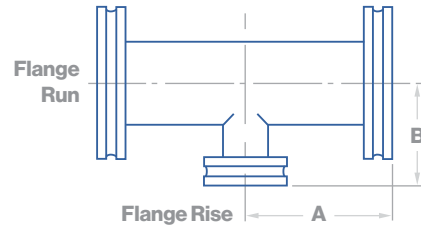
Part Number
V*-7-K3A
V*-7-K3B
V*-7-K3C
V*-7-K3D
V*-7-K3AE
V*-7-K3AF

Dimensions in Inches & Millimeters				
Size	Tube O.D.		A	
	inch	mm	inch	mm
63	2-1/2"	63.50	3.25	82.55
80	3"	76.20	3.50	88.90
100	4"	101.60	4.13	104.90
160	6"	152.40	5.38	136.65
200	8"	203.20	7.38	187.45
250	10"	254.00	9.88	250.95

* To include part number material & finish options please reference configurator on pages #120 – 121



ISO-K Reducing Tee



Part Number
V*-7R-K3BX3A
V*-7R-K3CX3A
V*-7R-K3CX3B
V*-7R-K3DX3A
V*-7R-K3DX3B
V*-7R-K3DX3C
V*-7R-K3EX3A
V*-7R-K3EX3B
V*-7R-K3EX3C
V*-7R-K3EX3D

Dimensions in Inches						
Flange Run		Flange Rise		A	B	
ISO	O.D.	ISO	O.D.			
80	3"	63	2-1/2"	3.50	3.50	
100	4"	63	2-1/2"	4.13	4.00	
100	4"	80	3"	4.13	4.00	
160	6"	63	2-1/2"	5.38	5.00	
160	6"	80	3"	5.38	5.00	
160	6"	100	4"	5.38	5.13	
200	8"	63	2-1/2"	7.38	6.00	
200	8"	80	3"	7.38	6.00	
200	8"	100	4"	7.38	6.13	
200	8"	160	6"	7.38	6.38	

Part Number
V*-7R-K3BX3A
V*-7R-K3CX3A
V*-7R-K3CX3B
V*-7R-K3DX3A
V*-7R-K3DX3B
V*-7R-K3DX3C
V*-7R-K3EX3A
V*-7R-K3EX3B
V*-7R-K3EX3C
V*-7R-K3EX3D

Dimensions in Millimeters						
Flange Run		Flange Rise		A	B	
ISO	O.D.	ISO	O.D.			
80	76.2	63	63.5	88.90	88.90	
100	101.6	63	63.5	104.90	101.60	
100	101.6	80	76.2	104.90	101.60	
160	152.4	63	63.5	136.65	127.00	
160	152.4	80	76.2	136.65	127.00	
160	152.4	100	101.6	136.65	130.30	
200	203.2	63	63.5	187.45	152.40	
200	203.2	80	76.2	187.45	152.40	
200	203.2	100	101.6	187.45	155.70	
200	203.2	160	152.4	187.45	162.05	

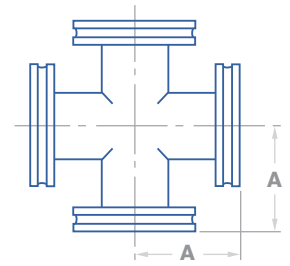
* To include part number material & finish options please reference configurator on pages #120 - 121



Valex
Vacuum
Components

ISO Crosses

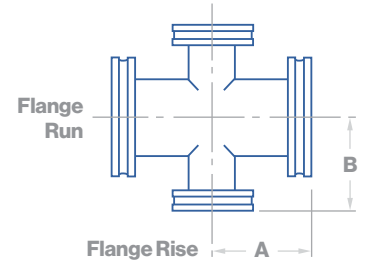
ISO-K 4-Way Cross



Part Number
316L BA
V*-9-K3A
V*-9-K3B
V*-9-K3C
V*-9-K3D
V*-9-K3E
V*-9-K3F

Dimensions in Inches & Millimeters					
Size	Tube O.D.		A		
	ISO	inch	mm	inch	mm
63	2-1/2"	63.50	3.25	82.55	
80	3"	76.20	3.50	88.90	
100	4"	101.60	4.13	104.90	
160	6"	152.40	5.38	136.65	
200	8"	203.20	7.38	187.45	
250	10"	254.00	9.88	250.95	

ISO-K 4-Way Reducing Cross



Part Number
V*-9R-K3BX3A
V*-9R-K3CX3A
V*-9R-K3CX3B
V*-9R-K3DX3A
V*-9R-K3DX3B
V*-9R-K3DX3C
V*-9R-K3EX3D

Dimensions in Inches						
ISO	Flange Run		Flange Rise		A	B
	O.D.	ISO	O.D.			
80	3"	63	2-1/2"	3.50	3.50	
100	4"	63	2-1/2"	4.13	4.00	
100	4"	80	3"	4.13	4.00	
160	6"	63	2-1/2"	5.38	5.00	
160	6"	80	3"	5.38	5.00	
160	6"	100	4"	5.38	5.13	
200	8"	160	6"	7.38	6.38	

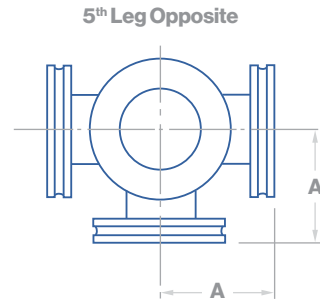
Part Number
V*-9R-K3BX3A
V*-9R-K3CX3A
V*-9R-K3CX3B
V*-9R-K3DX3A
V*-9R-K3DX3B
V*-9R-K3DX3C
V*-9R-K3EX3D

Dimensions in Millimeters						
ISO	Flange Run		Flange Rise		A	B
	O.D.	ISO	O.D.			
80	76.2	63	63.5	88.90	88.90	
100	101.6	63	63.5	104.90	101.60	
100	101.6	80	76.2	104.90	101.60	
160	152.4	63	63.5	136.65	127.00	
160	152.4	80	76.2	136.65	127.00	
160	152.4	100	101.6	136.65	130.30	
200	203.2	160	152.4	187.45	162.05	

* To include part number material & finish options please reference configurator on pages #120 – 121



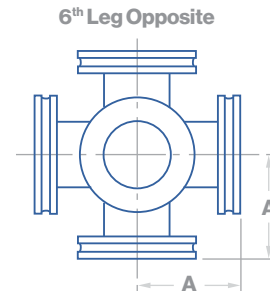
ISO-K 5-Way Cross



Part Number
V*-9F-K3A
V*-9F-K3B
V*-9F-K3C
V*-9F-K3D
V*-9F-K3E
V*-9F-K3F

Dimensions in Inches & Millimeters					
Size	Tube O.D.		A		
	inch	mm	inch	mm	
63	2-1/2"	63.50	3.25	82.55	
80	3"	76.20	3.50	88.90	
100	4"	101.60	4.13	104.90	
160	6"	152.40	5.38	136.65	
200	8"	203.20	7.38	187.45	
250	10"	254.00	9.88	250.95	

ISO-K 6-Way Cross



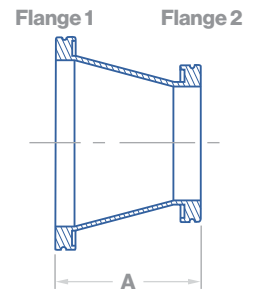
Part Number
V*-9S-N3A
V*-9S-N3B
V*-9S-N3C
V*-9S-N3D
V*-9S-N3E
V*-9S-N3F

Dimensions in Inches & Millimeters					
Size	Tube O.D.		A		
	inch	mm	inch	mm	
63	2-1/2"	63.50	3.25	82.55	
80	3"	76.20	3.50	88.90	
100	4"	101.60	4.13	104.90	
160	6"	152.40	5.38	136.65	
200	8"	203.20	7.38	187.45	
250	10"	254.00	9.88	250.95	

* To include part number material & finish options please reference configurator on pages #120 - 121

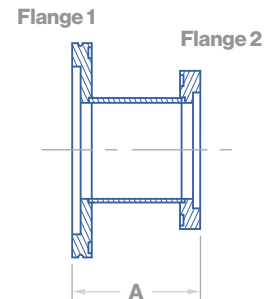


ISO-K Concentric Reducer



Part Number	Dimensions in Inches & Millimeters					
	Flange 1		Flange 2		A	
	ISO	inch	ISO	inch	inch	mm
V8-31-K3BX3A	80	3"	63	2-1/2"	4.125	104.775
V8-31-K3CX3A	100	4"	63	2-1/2"	4.125	104.775
V8-31-K3CX3B	100	4"	80	3"	4.125	104.775
V8-31-K3DX3B	160	6"	80	3"	6.000	152.400
V8-31-K3DX3C	160	6"	100	4"	6.000	152.400

ISO-K Straight Reducer



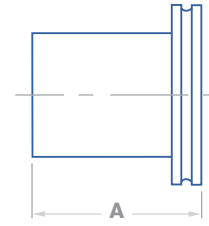
Part Number	Dimensions in Inches & Millimeters					
	Flange 1		Flange 2		A	
	ISO	inch	ISO	inch	inch	mm
V*-31S-K3BX3A	80	3"	63	2-1/2"	3.00	76.20
V*-31S-K3CX3A	100	4"	63	2-1/2"	3.00	76.20
V*-31S-K3CX3B	100	4"	80	3"	3.00	76.20
V*-31S-K3DX3B	160	6"	80	3"	3.00	76.20
V*-31S-K3DX3C	160	6"	100	4"	3.00	76.20

* To include part number material & finish options please reference configurator on pages #120 – 121



Valex
Vacuum
Components

ISO-K Half Nipple



Part Number	Dimensions in Inches & Millimeters				
	Size	Tube O.D.		A	
		ISO	inch	mm	inch
V*-6H-K3A	63	2-1/2"	63.50	3.25	82.55
V*-6H-K3B	80	3"	76.20	3.50	88.90
V*-6H-K3C	100	4"	101.60	4.13	104.90
V*-6H-K3D	160	6"	152.40	5.38	136.65
V*-6H-K3E	200	8"	203.20	7.38	187.45
V*-6H-K3F	250	10"	254.00	9.88	250.95
V*-6H-K3G	320	12"	304.80	9.88	250.95
V*-6H-K3H	400	16"	406.40	9.88	250.95
V*-6H-K3I	500	20"	508.00	9.88	250.95

ISO Nipples

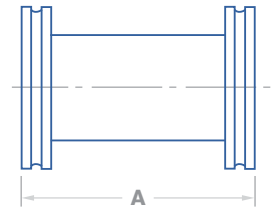
* To include part number material & finish options please reference configurator on pages #120 - 121



Valex

Vacuum Components

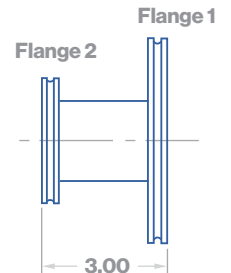
ISO Nipples



ISO-K Full Nipple

Part Number	Dimensions in Inches & Millimeters				
	Size	Tube O.D.		A	
	ISO	inch	mm	inch	mm
V*-6F-K3A	63	2-1/2"	63.50	6.50	165.10
V*-6F-K3B	80	3"	76.20	7.00	177.80
V*-6F-K3C	100	4"	101.60	8.26	209.80
V*-6F-K3D	160	6"	152.40	10.76	273.30
V*-6F-K3E	200	8"	203.20	14.76	374.90
V*-6F-K3F	250	10"	254.00	19.76	501.90
V*-6F-K3G	320	12"	304.80	19.76	501.90
V*-6F-K3H	400	16"	406.40	19.76	501.90
V*-6F-K3I	500	20"	508.00	19.76	501.90

ISO-K Reducing Straight Nipple

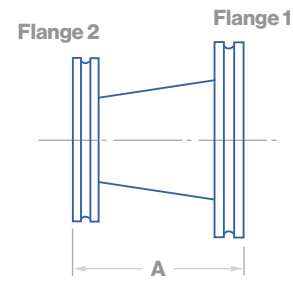


Part Number	Dimensions in Inches & Millimeters			
	Flange 1	Flange 2	Tube O.D.	
	ISO	ISO	inch	mm
V*-31S-K3BX3A	80	63	2-1/2"	63.50
V*-31S-K3CX3A	100	63	2-1/2"	63.50
V*-31S-K3CX3B	100	80	3"	76.20
V*-31S-K3DX3A	160	63	2-1/2"	63.50
V*-31S-K3DX3B	160	80	3"	76.20
V*-31S-K3DX3C	160	100	4"	101.60
V*-31S-K3EX3A	200	63	2-1/2"	63.50
V*-31S-K3EX3B	200	80	3"	76.20
V*-31S-K3EX3C	200	100	4"	101.60
V*-31S-K3EX3D	200	160	6"	152.40
V*-31S-K3FX3A	250	63	2-1/2"	63.50
V*-31S-K3FX3B	250	80	3"	76.20
V*-31S-K3FX3C	250	100	4"	101.60
V*-31S-K3FX3D	250	160	6"	152.40
V*-31S-K3FX3E	250	200	8"	203.20

* To include part number material & finish options please reference configurator on pages #120 – 121



ISO-K Reducing Conical Nipple

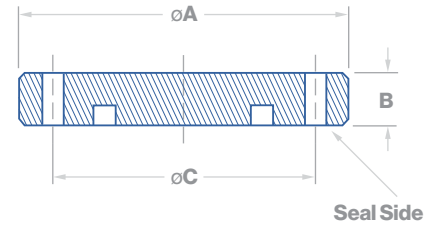


Part Number	Dimensions in Inches & Millimeters							
	Flange 1	Tube O.D. 1		Flange 2	Tube O.D. 2		A	
	ISO	inch	mm	ISO	inch	mm	inch	mm
V*-31-K3BX3A	80	3"	76.2	63	2-1/2"	63.50	4.12	104.65
V*-31-K3CX3A	100	4"	101.6	63	2-1/2"	63.50	4.12	104.65
V*-31-K3CX3B	100	4"	101.6	80	3	76.20	4.12	104.65

* To include part number material & finish options please reference configurator on pages #120 - 121



ISO-F Blank Flange



Part Number
V*-38-K3A
V*-38-K3B
V*-38-K3C
V*-38-K3D
V*-38-K3E
V*-38-K3F
V*-38-K3G
V*-38-K3H
V*-38-K3I

Dimensions in Inches						
Flange Size	A	B	C	Bolt Holes	Bolt Diameter	
ISO						
63	5.118	0.472	4.331	4	0.359	
80	5.709	0.472	4.921	8	0.359	
100	6.496	0.472	5.709	8	0.359	
160	8.858	0.630	7.874	8	0.438	
200	11.220	0.630	10.236	12	0.438	
250	13.189	0.630	12.205	12	0.438	
320	16.732	0.787	15.551	12	0.551	
400	20.079	0.787	18.898	16	0.551	
500	24.016	0.787	22.835	16	0.551	

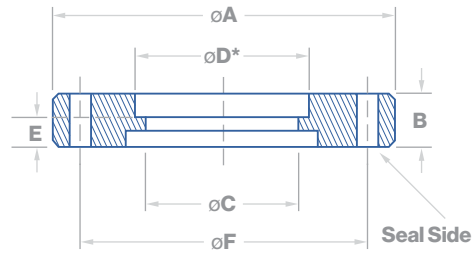
Part Number
V*-38-K3A
V*-38-K3B
V*-38-K3C
V*-38-K3D
V*-38-K3E
V*-38-K3F
V*-38-K3G
V*-38-K3H
V*-38-K3I

Dimensions in Millimeters						
Flange Size	A	B	C	Bolt Holes	Bolt Diameter	
ISO						
63	130.00	11.99	110.01	4	9.12	
80	145.01	11.99	124.99	8	9.12	
100	165.00	11.99	145.01	8	9.12	
160	224.99	16.00	200.00	8	11.13	
200	284.99	16.00	259.99	12	11.13	
250	335.00	16.00	310.01	12	11.13	
320	424.99	19.99	395.00	12	14.00	
400	510.01	19.99	480.01	16	14.00	
500	610.01	19.99	580.01	16	14.00	

* To include part number material & finish options please reference configurator on pages #120 – 121



ISO-F Bored Flange



Part Number	Dimensions in Inches									
	Flange ISO	Nominal I.D.	A	B	C	D	E	F	Bolt Holes	Bolt Diameter
V*-387B-F3A	63	2-1/2"	5.118	0.472	2.438	2.510	0.250	4.331	4	0.359
V*-387B-F3B	80	3-1/2"	5.709	0.472	2.938	3.010	0.250	4.921	8	0.359
V*-387B-F3C	100	4"	6.496	0.472	3.910	4.010	0.250	5.709	8	0.359
V*-387B-F3D	160	6"	8.858	0.630	5.875	6.020	0.375	7.874	8	0.438
V*-387B-F3E	200	8"	11.220	0.630	7.875	8.020	0.375	10.236	12	0.438
V*-387B-F3F	250	10"	13.189	0.630	9.875	10.020	0.375	12.205	12	0.438
V*-387B-F3G	320	12"	16.732	0.787	11.760	12.020	0.375	15.551	12	0.551
V*-387B-F3H	400	16"	20.079	0.787	15.642	16.020	0.375	18.898	16	0.551
V*-387B-F3I	500	20"	24.016	0.787	19.642	20.020	0.375	22.835	16	0.551

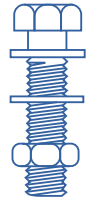
Part Number	Dimensions in Millimeters									
	Flange ISO	Nominal I.D.	A	B	C	D	E	F	Bolt Holes	Bolt Diameter
V*-387B-F3A	63	63.50	130.00	11.99	61.93	63.75	6.35	110.01	4	9.12
V*-387B-F3B	80	88.90	145.01	11.99	74.63	76.45	6.35	124.99	8	9.12
V*-387B-F3C	100	101.06	165.00	11.99	99.32	101.85	6.35	145.01	8	9.12
V*-387B-F3D	160	152.40	224.99	11.99	149.23	152.91	9.53	200.00	8	9.12
V*-387B-F3E	200	203.20	284.99	16.00	200.03	203.71	9.53	259.99	12	11.13
V*-387B-F3F	250	254.00	335.00	16.00	250.83	254.51	9.53	310.01	12	11.13
V*-387B-F3G	320	304.80	424.99	16.00	298.70	305.31	9.53	395.00	12	11.13
V*-387B-F3H	400	406.80	510.01	19.99	397.31	406.91	9.53	480.01	16	14.00
V*-387B-F3I	500	508.00	610.01	19.99	498.91	508.51	9.53	580.01	16	14.00

ISO Flanges

* To include part number material & finish options please reference configurator on pages #120 - 121

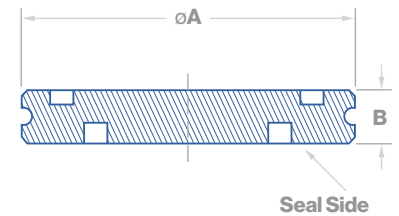


ISO-F Bolt Kits, Metric



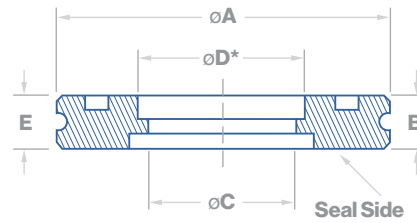
Part Number	Description			
	ISO	Number of Stainless Steel Bolts	Nuts & Washers	Size
V*-70B-3A	63	4	X	M8 x 40mm
V*-70B-3B	80	8	X	M8 x 40mm
V*-70B-3C	100	8	X	M8 x 40mm
V*-70B-3D	160	8	X	M10 x 50mm
V*-70B-3E	200	12	X	M10 x 50mm
V*-70B-3H	250	12	X	M10 x 50mm
V*-70B-3G	320	12	X	M12 x 60mm
V*-70B-3F	400	16	X	M12 x 60mm
V*-70B-3I	500	16	X	M12 x 60mm

ISO-K Blank Flange



Part Number	Dimensions in Inches & Millimeters				
	Flange Size	A		B	
		inch	mm	inch	mm
V*-38-K3A	63	3.74	95.00	0.47	11.94
V*-38-K3B	80	4.33	110.01	0.47	11.94
V*-38-K3C	100	5.12	130.00	0.47	11.94
V*-38-K3D	160	7.09	180.00	0.47	11.94
V*-38-K3E	200	9.45	240.00	0.47	11.94
V*-38-K3F	250	11.42	289.99	0.47	11.94
V*-38-K3G	320	14.57	370.00	0.67	17.02
V*-38-K3H	400	17.72	449.99	0.67	17.02
V*-38-K3I	500	21.65	549.99	0.67	17.02

* To include part number material & finish options please reference configurator on pages #120 – 121



ISO-K Bored Flange

Part Number
V*-38B-K3A
V*-38B-K3B
V*-38B-K3C
V*-38B-K3D
V*-38B-K3E
V*-38B-K3F
V*-38B-K3G
V*-38B-K3H
V*-38B-K3I

Dimensions in Inches						
Flange Size	Nominal I.D.	A	B	C	D	E
ISO						
63	2-1/2"	3.740	0.47	2.438	2.51	0.25
80	3"	4.331	0.47	2.938	3.01	0.25
100	4"	5.118	0.47	3.910	4.01	0.25
160	6"	7.087	0.47	5.875	6.02	0.375
200	8"	9.449	0.47	7.875	8.02	0.375
250	10"	11.417	0.47	9.875	10.02	0.375
320	12"	14.567	0.67	11.760	12.02	0.375
400	16"	17.716	0.67	15.624	16.02	0.375
500	20"	21.653	0.67	19.624	20.02	0.375

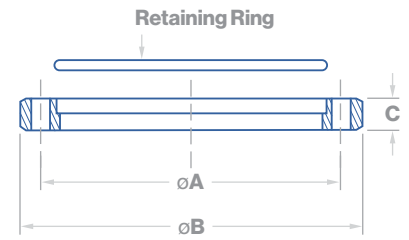
Part Number
V*-38B-K3A
V*-38B-K3B
V*-38B-K3C
V*-38B-K3D
V*-38B-K3E
V*-38B-K3F
V*-38B-K3G
V*-38B-K3H
V*-38B-K3I

Dimensions in Millimeters						
Flange Size	Nominal I.D.	A	B	C	D	E
ISO						
63	63.50	95.00	11.94	61.93	63.75	6.35
80	76.20	110.01	11.94	74.63	76.45	6.35
100	101.60	130.00	11.94	99.31	101.85	6.35
160	152.40	180.01	11.94	149.23	152.91	9.53
200	203.20	240.00	11.94	200.03	203.71	9.53
250	254.00	289.99	11.94	250.83	254.51	9.53
320	304.80	370.00	17.02	298.70	305.31	9.53
400	406.40	449.99	17.02	396.85	406.91	9.53
500	508.00	549.99	17.02	498.45	508.51	9.53

* To include part number material & finish options please reference configurator on pages #120 - 121



ISO-F Bored Rotatable Flange & Retainer Ring



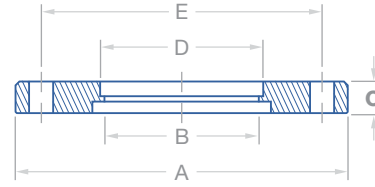
Part Number	Dimensions in Inches			
	Flange Size ISO	A	B	C
V*-38B-F3AFR	63	4.331	5.118	0.472
V*-38B-F3BFR	80	4.921	5.709	0.472
V*-38B-F3CFR	100	5.709	6.496	0.472
V*-38B-F3DFR	160	7.874	8.858	0.630
V*-38B-F3EFR	200	10.236	11.220	0.630
V*-38B-F3FFR	250	12.205	13.189	0.630
V*-38B-F3GFR	320	15.551	16.732	0.787
V*-38B-F3HFR	400	18.898	20.079	0.787
V*-38B-F3IFR	500	22.835	24.016	0.787

Part Number	Dimensions in Millimeters			
	Flange Size ISO	A	B	C
V*-38B-F3AFR	63	110.01	130.00	11.99
V*-38B-F3BFR	80	124.99	145.01	11.99
V*-38B-F3CFR	100	145.01	165.00	11.99
V*-38B-F3DFR	160	200.00	224.99	16.00
V*-38B-F3EFR	200	259.99	284.99	16.00
V*-38B-F3FFR	250	310.01	335.00	16.00
V*-38B-F3GFR	320	395.00	424.99	19.99
V*-38B-F3HFR	400	480.01	510.01	19.99
V*-38B-F3IFR	500	580.01	610.01	19.99

* To include part number material & finish options please reference configurator on pages #120 – 121



ISO-F Bored Flange



Part Number	Dimensions in Inches							
	Flange Size ISO	A	B	C	D	E	# of Bolts	Hole Diameter
V*-38B-F3A	63	5.17	2.44	0.47	2.51	4.33	4	0.36
V*-38B-F3B	80	5.71	2.94	0.47	3.01	4.92	8	0.36
V*-38B-F3C	100	6.50	3.91	0.47	4.01	5.71	8	0.36
V*-38B-F3D	160	8.86	5.88	0.63	6.02	7.87	8	0.44
V*-38B-F3E	200	11.22	7.88	0.63	8.02	10.24	12	0.44
V*-38B-F3F	250	13.19	9.88	0.63	10.02	12.20	12	0.44
V*-38B-F3G	320	16.73	11.76	0.79	12.02	15.55	12	0.52
V*-38B-F3H	400	20.08	15.81	0.79	16.02	16.02	16	0.52
V*-38B-F3I	500	24.02	19.81	0.79	20.02	22.83	16	0.52

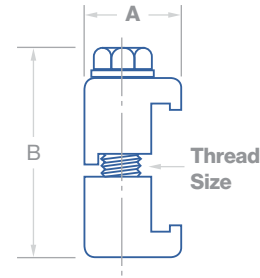
Part Number	Dimensions in Millimeters							
	Flange Size ISO	A	B	C	D	E	# of Bolts	Hole Diameter
V*-38B-F3A	63	131.32	61.93	11.94	63.75	109.98	4	9.14
V*-38B-F3B	80	145.03	74.63	11.94	76.45	124.97	8	9.14
V*-38B-F3C	100	165.10	99.31	11.94	101.85	145.03	8	9.14
V*-38B-F3D	160	225.04	149.23	16.00	152.91	199.90	8	11.18
V*-38B-F3E	200	284.99	200.03	16.00	203.71	260.10	12	11.18
V*-38B-F3F	250	335.03	250.83	16.00	254.51	309.88	12	11.18
V*-38B-F3G	320	424.94	298.70	20.07	305.31	384.97	12	13.21
V*-38B-F3H	400	510.03	401.62	20.07	406.91	406.91	16	13.21
V*-38B-F3I	500	610.11	503.22	20.07	508.51	579.88	16	13.21

ISO Flanges

* To include part number material & finish options please reference configurator on pages #120 - 121



ISO-K Double Claw Clamp

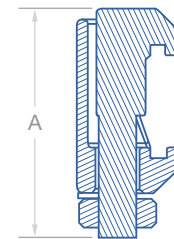


Part Number
V*-13D-K3APS
V*-13D-K3BPS
V*-13D-K3CPS
V*-13D-K3DPS
V*-13D-K3EPS
V*-13D-K3FPS
V*-13D-K3GPS
V*-13D-K3HPS
V*-13D-K3IPS

Dimensions in Inches & Millimeters							
Flange Size	A		B		Thread Size	Clamps Required	
	inch	mm	inch	mm			
63	0.94	23.88	1.96	49.78	5/16 - 18	4	
80	0.94	23.88	1.96	49.78	5/16 - 18	8	
100	0.94	23.88	1.96	49.78	5/16 - 18	8	
160	1.10	27.94	1.96	49.78	5/16 - 18	8	
200	1.10	27.94	1.96	49.78	5/16 - 18	12	
250	1.10	27.94	1.96	49.78	5/16 - 18	12	
320	1.34	34.04	2.50	63.50	7/16 - 14	12	
400	1.34	34.04	2.50	63.50	7/16 - 14	16	
500	1.34	34.04	2.50	63.50	7/16 - 14	16	

ISO Flanges

ISO-K Double Claw Clamp



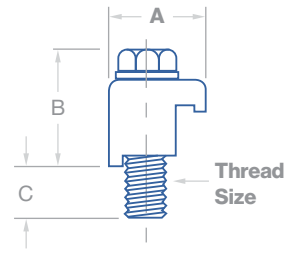
Part Number
V*-13D-K3CPM
V*-13D-K3CPM
V*-13D-K3CPM
V*-13D-K3CPM
V*-13D-K3CPM
V*-13D-K3CPM
V*-13D-K3IPM
V*-13D-K3IPM
V*-13D-K3IPM

Dimensions in Inches & Millimeters						
Flange Size	A		Bolt	Fits Flange	Clamps Required	
	inch	mm				ISO
100	2.42	64.5	M8	63	4	
100	2.42	64.5	M8	80	4	
100	2.42	64.5	M8	100	4	
100	2.42	64.5	M8	160	6	
100	2.42	64.5	M8	200	8	
100	2.42	64.5	M8	250	10	
500	2.99	75.9	M12	320	12	
500	2.99	75.9	M12	400	16	
500	2.99	75.9	M12	500	20	

* To include part number material & finish options please reference configurator on pages #120 - 121



ISO-K Single Claw Clamp



Part Number
V*-13-K3A
V*-13-K3B
V*-13-K3C
V*-13-K3D
V*-13-K3E
V*-13-K3F
V*-13-K3G
V*-13-K3H
V*-13-K3I

Dimensions in Inches						
Flange Size	A	B	C	Thread Size	Clamps Required	
ISO						
63	0.94	1.18	0.52	$\frac{5}{16}$ - 18	4	
80	0.94	1.18	0.52	$\frac{5}{16}$ - 18	8	
100	0.94	1.18	0.52	$\frac{5}{16}$ - 18	8	
160	1.10	1.18	0.52	$\frac{5}{16}$ - 18	8	
200	1.10	1.18	0.52	$\frac{5}{16}$ - 18	12	
250	1.10	1.18	0.52	$\frac{5}{16}$ - 18	12	
320	1.34	1.46	0.88	$\frac{7}{16}$ - 14	12	
400	1.34	1.46	0.88	$\frac{7}{16}$ - 14	16	
500	1.34	1.46	0.88	$\frac{7}{16}$ - 14	16	

Part Number
V*-13-K3A
V*-13-K3B
V*-13-K3C
V*-13-K3D
V*-13-K3E
V*-13-K3F
V*-13-K3G
V*-13-K3H
V*-13-K3I

Dimensions in Millimeters						
Flange Size	A	B	C	Thread Size	Clamps Required	
ISO						
63	23.88	29.97	13.21	$\frac{5}{16}$ - 18	4	
80	23.88	29.97	13.21	$\frac{5}{16}$ - 18	8	
100	23.88	29.97	13.21	$\frac{5}{16}$ - 18	8	
160	27.94	29.97	13.21	$\frac{5}{16}$ - 18	8	
200	27.94	29.97	13.21	$\frac{5}{16}$ - 18	12	
250	27.94	29.97	13.21	$\frac{5}{16}$ - 18	12	
320	34.04	37.08	22.35	$\frac{7}{16}$ - 14	12	
400	34.04	37.08	22.35	$\frac{7}{16}$ - 14	16	
500	34.04	37.08	22.35	$\frac{7}{16}$ - 14	16	

* To include part number material & finish options please reference configurator on pages #120 - 121



ISO-K Single Claw Clamp, Metric

Part Number	Dimensions in Inches					
	Flange Size	A	B	C	Thread Size	Clamps Required
	ISO					
V*-13S-K3A	63	0.94	1.20	0.40	M8 x 1.25	4
V*-13S-K3B	80	0.94	1.20	0.40	M8 x 1.25	8
V*-13S-K3C	100	0.94	1.20	0.40	M8 x 1.25	8
V*-13S-K3D	160	1.10	1.20	0.40	M10 x 1.50	8
V*-13S-K3E	200	1.10	1.20	0.40	M10 x 1.50	12
V*-13S-K3F	250	1.10	1.20	0.40	M10 x 1.50	12
V*-13S-K3G	320	1.34	1.48	0.79	M12 x 1.75	12
V*-13S-K3H	400	1.34	1.48	0.79	M12 x 1.75	16
V*-13S-K3I	500	1.34	1.48	0.79	M12 x 1.75	16

Part Number	Dimensions in Millimeters					
	Flange Size	A	B	C	Thread Size	Clamps Required
	ISO					
V*-13S-K3A	63	23.88	30.48	10.16	M8 x 1.25	4
V*-13S-K3B	80	23.88	30.48	10.16	M8 x 1.25	8
V*-13S-K3C	100	23.88	30.48	10.16	M8 x 1.25	8
V*-13S-K3D	160	27.94	30.48	10.16	M10 x 1.50	8
V*-13S-K3E	200	27.94	30.48	10.16	M10 x 1.50	12
V*-13S-K3F	250	27.94	30.48	10.16	M10 x 1.50	12
V*-13S-K3G	320	34.04	37.59	20.07	M12 x 1.75	12
V*-13S-K3H	400	34.04	37.59	20.07	M12 x 1.75	16
V*-13S-K3I	500	34.04	37.59	20.07	M12 x 1.75	16

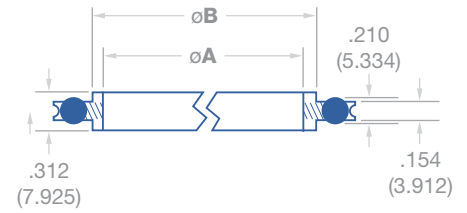
* To include part number material & finish options please reference configurator on pages #120 - 121



Valex
Vacuum
Components

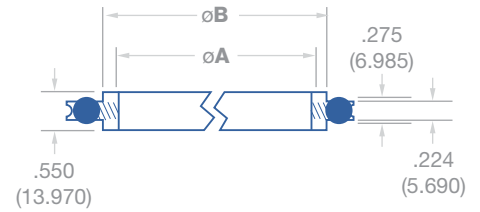
ISO Centering Rings

ISO Centering Ring with O-ring & Spacer Ring



Part Number
V*-39D-I3ASC
V*-39D-I3BSC
V*-39D-I3CSC
V*-39D-I3DSC
V*-39D-I3ESC
V*-39D-I3FSC

Dimensions in Inches & Millimeters				
Flange Size	A		B	
	inch	mm	inch	mm
63	2.63	66.80	2.74	69.60
80	3.14	79.76	3.25	82.55
100	3.89	98.81	4.00	101.60
160	5.90	149.86	6.01	152.65
200	8.26	209.80	8.37	212.60
250	10.14	257.56	10.25	260.35



Part Number
V*-39D-I3GSC
V*-39D-I3HSC
V*-39D-I3ISC

Dimensions in Inches & Millimeters				
Flange Size	A		B	
	inch	mm	inch	mm
320	12.32	312.93	12.51	317.75
400	15.55	394.97	15.75	400.05
500	19.53	496.06	19.72	500.89

* To include part number material & finish options please reference configurator on pages #120 – 121

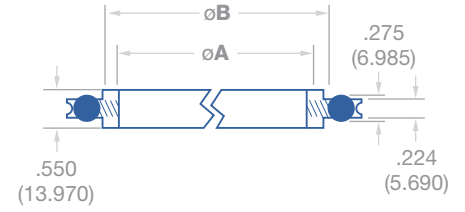


Valex

Vacuum
Components

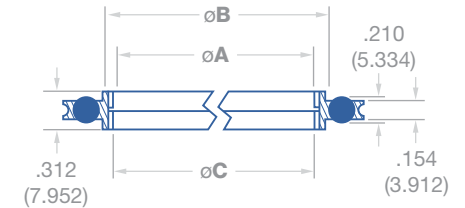
ISO Centering Rings

ISO Centering Ring with O-ring (Stainless Steel)



Part Number	Dimensions in Inches & Millimeters				
	Flange Size	A		B	
		ISO	inch	mm	inch
V*-39C-I3ASC	63	2.63	66.80	2.74	69.60
V*-39C-I3BSC	80	3.14	79.76	3.25	82.55
V*-39C-I3CSC	100	3.89	98.81	4.00	101.60
V*-39C-I3DSC	160	5.90	149.86	6.01	152.65
V*-39C-I3ESC	200	8.26	209.80	8.37	212.60
V*-39C-I3FSC	250	10.14	257.56	10.25	260.35
V*-39C-I3GSC	320	12.32	312.93	12.52	318.01
V*-39C-I3HSC	400	15.55	394.97	15.74	399.80

ISO Screened Centering Ring (Stainless Steel) with O-ring & Aluminum Spacer Ring



Part Number	Dimensions in Inches & Millimeters							
	Flange Size	A		B		C		Mesh (sq/in)
		ISO	inch	mm	inch	mm	inch	
V*-39M-I3ASI	63	2.63	66.80	2.74	69.60	2.38	60.45	16
V*-39M-I3BSI	80	3.14	79.76	3.25	82.55	2.87	72.90	16
V*-39M-I3CSI	100	3.89	98.81	4.00	101.60	3.50	88.90	16
V*-39M-I3DSI	160	5.90	149.86	6.01	152.65	5.50	139.70	16

* To include part number material & finish options please reference configurator on pages #120 – 121

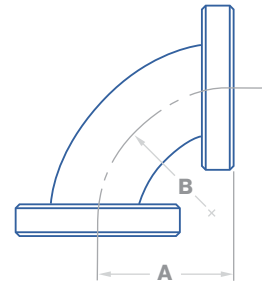
O-ring O-ring options

See part number configurator for O-ring material options



CF 90° Elbow

No Tangent, Rotatable Flanges



Part Number	Dimensions in Inches			
	Flange Size	Tube O.D.	A	B
V*-2-C2AFR	1.33	3/4"	1.50	1.00
V*-2-C2BFR	2.12	1"	1.67	1.50
V*-2-C2CFR	2.75	1-1/2"	2.46	2.25
V*-2-C2DFR	3.38	2"	3.22	3.00
V*-2-C2EFR	4.50	2-1/2"	4.12	3.75
V*-2-C2FFR	4.62	3"	4.78	4.50
V*-2-C2GFR	6.00	4"	6.44	6.00
V*-2-C2IFR	8.00	6"	9.50	9.00
V*-2-C2JFR	10.00	8"	12.50	12.00
V*-2-C2LFR	13.25	10"	15.50	15.00

Part Number	Dimensions in Millimeters			
	Flange Size	Tube O.D.	A	B
V*-2-C2AFR	33.78	19.05	38.10	25.40
V*-2-C2BFR	52.85	25.40	42.42	38.10
V*-2-C2CFR	69.85	38.10	62.48	57.15
V*-2-C2DFR	85.85	50.80	81.79	76.20
V*-2-C2EFR	114.30	63.50	104.65	95.25
V*-2-C2FFR	117.35	76.20	121.41	114.30
V*-2-C2GFR	152.40	101.60	163.58	152.40
V*-2-C2IFR	203.20	152.40	241.30	228.60
V*-2-C2JFR	254.00	203.20	317.50	304.80
V*-2-C2LFR	336.55	254.00	393.70	381.00

* To include part number material & finish options please reference configurator on pages #120 - 121

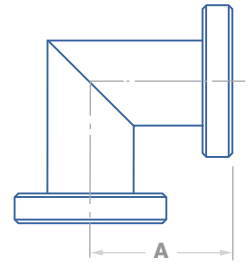


Valex

Vacuum
Components

CF Elbows

CF 90° Mitered Elbow Rotatable Flanges



Part Number	Dimensions in Inches		
	Flange Size	Tube O.D.	A
V*-2M-C2AFR	1.33	3/4"	1.50
V*-2M-C2BFR	2.12	1"	2.05
V*-2M-C2CFR	2.75	1-1/2"	2.46
V*-2M-C2DFR	3.38	2"	3.22
V*-2M-C2EFR	4.50	2-1/2"	3.38
V*-2X-C2EFR	4.50	2-1/2"	4.12
V*-2M-C2FFR	4.62	3"	3.53
V*-2M-C2GFR	6.00	4"	4.32
V*-2X-C2GFR	6.00	4"	5.31
V*-2M-C2HFR	6.75	5"	4.71
V*-2M-C2AIFR	8.00	6"	5.50
V*-2X-C2IFR	8.00	6"	6.56
V*-2M-C2JFR	10.00	8"	7.50
V*-2M-C2LFR	13.25	10"	10.00

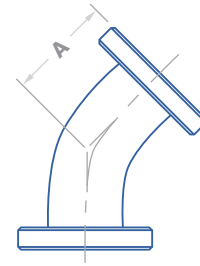
Part Number	Dimensions in Millimeters		
	Flange Size	Tube O.D.	A
V*-2M-C2AFR	33.78	19.05	38.10
V*-2M-C2BFR	53.85	25.40	52.07
V*-2M-C2CFR	69.85	38.10	62.48
V*-2M-C2DFR	85.85	50.80	81.79
V*-2M-C2EFR	114.30	63.50	85.85
V*-2X-C2EFR	114.30	63.50	104.65
V*-2M-C2FFR	117.35	76.20	89.66
V*-2M-C2GFR	152.40	101.60	109.73
V*-2X-C2GFR	152.40	101.60	134.87
V*-2M-C2HFR	171.45	127.00	119.63
V*-2M-C2AIFR	203.20	152.40	139.70
V*-2X-C2IFR	203.20	152.40	166.62
V*-2M-C2JFR	254.00	203.20	190.50
V*-2M-C2LFR	336.55	254.00	254.00

* To include part number material & finish options please reference configurator on pages #120 – 121



CF 45° Elbow

With Tangent, Rotatable Flanges



Part Number	Dimensions in Inches		
	Flange Size	Tube O.D.	A
V*-2K-C2AFR	1.33	3/4"	0.94
V*-2K-C2BFR	2.12	1"	1.14
V*-2K-C2CFR	2.75	1-1/2"	1.74
V*-2K-C2DFR	3.38	2"	2.07
V*-2K-C2EFR	4.50	2-1/2"	3.37
V*-2K-C2FFR	4.62	3"	3.96
V*-2K-C2GFR	6.00	4"	5.22

Part Number	Dimensions in Millimeters		
	Flange Size	Tube O.D.	A
V*-2K-C2AFR	33.78	19.05	23.88
V*-2K-C2BFR	53.85	25.40	28.96
V*-2K-C2CFR	69.85	38.10	44.20
V*-2K-C2DFR	85.85	50.80	52.58
V*-2K-C2EFR	114.30	63.50	85.60
V*-2K-C2FFR	117.35	76.20	100.58
V*-2K-C2GFR	152.40	101.60	132.59

* To include part number material & finish options please reference configurator on pages #120 - 121



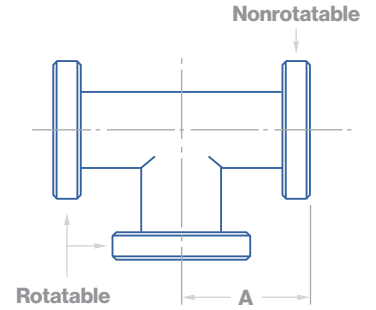
Valex

Vacuum
Components

CF
Tees

CF Equal Tee

Rotatable, Nonrotatable Flanges



Part Number	Dimensions in Inches		
	Flange Size	Tube O.D.	A
V*-7-C2ATB	1.33	3/4"	1.50
V*-7-C2BTB	2.12	1"	2.05
V*-7-C2CTB	2.75	1-1/2"	2.46
V*-7-C2DTB	3.38	2"	3.22
V*-7-C2ETB	4.50	2-1/2"	3.38
V*-7L-C2ETB	4.50	2-1/2"	4.12
V*-7-C2FTB	4.62	3"	3.53
V*-7-C2GTB	6.00	4"	4.32
V*-7L-C2GTB	6.00	4"	5.31
V*-7-C2HTB	6.75	5"	4.71
V*-7-C2ITB	8.00	6"	5.50
V*-7L-C2ITB	8.00	6"	6.56
V*-7-C2JTB	10.00	8"	7.50
V*-7-C2LTB	13.25	10"	10.00

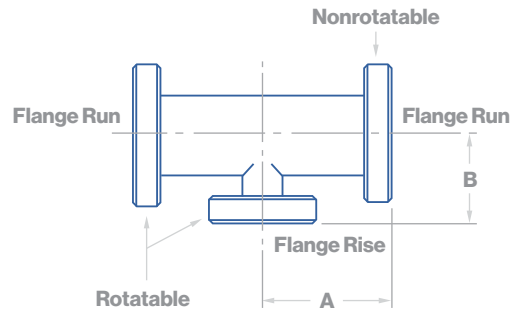
Part Number	Dimensions in Millimeters		
	Flange Size	Tube O.D.	A
V*-7-C2ATB	33.78	19.05	38.10
V*-7-C2BTB	53.85	25.40	52.07
V*-7-C2CTB	69.85	38.10	62.48
V*-7-C2DTB	85.85	50.80	81.79
V*-7-C2ETB	114.30	63.50	85.85
V*-7L-C2ETB	114.30	63.50	104.65
V*-7-C2FTB	117.35	76.20	89.66
V*-7-C2GTB	152.40	101.60	109.73
V*-7L-C2GTB	152.40	101.60	134.87
V*-7-C2HTB	171.45	127.00	119.63
V*-7-C2ITB	203.20	152.40	139.70
V*-7L-C2ITB	203.20	152.40	166.62
V*-7-C2JTB	254.00	203.20	190.50
V*-7-C2LTB	336.55	254.00	254.00

* To include part number material & finish options please reference configurator on pages #120 – 121



CF Reducing Tee

Rotatable, Nonrotatable Flanges



Part Number	Dimensions in Inches					
	Flange Run (Rotatable)		Flange Rise (Nonrotatable)		A	B
	Flange Size	Tube O.D.	Flange O.D.	Tube O.D.		
V*-7R-C2CX2A	2.75	1-1/2"	1.33	3/4"	2.46	1.87
V*-7R-C2CX2B	2.75	1-1/2"	2.12	1"	2.46	2.29
V*-7R-C2DX2A	3.38	2"	1.33	3/4"	3.22	2.13
V*-7R-C2DX2C	3.38	2"	2.75	1-1/2"	3.22	2.71
V*-7R-C2EX2C	4.50	2-1/2"	2.75	1-1/2"	3.38	2.96
V*-7R-C2EX2D	4.50	2-1/2"	3.38	2"	3.38	3.48
V*-7R-C2FX2D	4.62	3"	3.38	2"	3.53	3.73
V*-7R-C2FX2E	4.62	3"	4.50	2-1/2"	3.53	3.63
V*-7R-C2GX2C	6.00	4"	2.75	1-1/2"	4.32	3.71
V*-7R-C2GX2D	6.00	4"	3.38	2"	4.32	4.23
V*-7R-C2GX2E	6.00	4"	4.50	2-1/2"	4.32	4.13
V*-7R-C2GX2F	6.00	4"	4.62	3"	4.32	4.03
V*-7R-C2HX2G	6.75	5"	6.00	4"	4.71	4.82
V*-7R-C2IX2C	8.00	6"	2.75	1-1/2"	5.50	4.71
V*-7R-C2IX2D	8.00	6"	3.38	2"	5.50	5.23
V*-7R-C2IX2E	8.00	6"	4.50	2-1/2"	5.50	5.13
V*-7R-C2IX2G	8.00	6"	6.00	4"	5.50	5.32
V*-7R-C2JX2I	10.00	8"	8.00	6"	7.50	6.50

Part Number	Dimensions in Millimeters					
	Flange 1 & 2 (Rotatable)		Flange 3 (Nonrotatable)		A	B
	Flange Size	Tube O.D.	Flange O.D.	Tube O.D.		
V*-7R-C2CX2A	69.85	38.10	33.78	19.05	62.48	47.50
V*-7R-C2CX2B	69.85	38.10	53.85	25.40	62.48	58.17
V*-7R-C2DX2A	85.85	50.80	33.78	19.05	81.79	54.10
V*-7R-C2DX2C	85.85	50.80	69.85	38.10	81.79	68.83
V*-7R-C2EX2C	114.30	63.50	69.85	38.10	85.85	75.18
V*-7R-C2EX2D	114.30	63.50	85.85	50.80	85.85	88.39
V*-7R-C2FX2D	117.35	76.20	85.85	50.80	89.66	94.74
V*-7R-C2FX2E	117.35	76.20	114.30	63.50	89.66	92.20
V*-7R-C2GX2C	152.40	101.60	69.85	38.10	109.73	94.23
V*-7R-C2GX2D	152.40	101.60	85.85	50.80	109.73	107.44
V*-7R-C2GX2E	152.40	101.60	114.30	63.50	109.73	104.90
V*-7R-C2GX2F	152.40	101.60	117.35	76.20	109.73	102.36
V*-7R-C2HX2G	171.45	127.00	152.40	101.60	119.63	122.43
V*-7R-C2IX2C	203.20	152.40	69.85	38.10	139.70	119.63
V*-7R-C2IX2D	203.20	152.40	85.85	50.80	139.70	132.84
V*-7R-C2IX2E	203.20	152.40	114.30	63.50	139.70	130.30
V*-7R-C2IX2G	203.20	152.40	152.40	101.60	139.70	135.13
V*-7R-C2JX2I	254.00	203.20	203.20	152.40	190.50	165.10

* To include part number material & finish options please reference configurator on pages #120 - 121



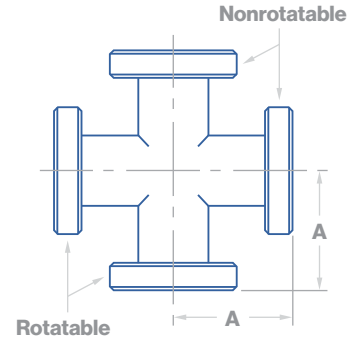
Valex

Vacuum
Components

CF
Crosses

CF 4-Way Cross

Rotatable, Nonrotatable Flanges



Part Number	Dimensions in Inches		
	Flange Size	Tube O.D.	A
V*-9-C2ATC	1.33	3/4"	1.50
V*-9-C2BTC	2.12	1"	2.05
V*-9-C2CTC	2.75	1-1/2"	2.46
V*-9-C2DTC	3.38	2"	3.22
V*-9-C2ETC	4.50	2-1/2"	3.38
V*-9L-C2ETC	4.50	2-1/2"	4.12
V*-9-C2FTC	4.62	3"	3.53
V*-9-C2GTC	6.00	4"	4.32
V*-9L-C2GTC	6.00	4"	5.31
V*-9-C2HTC	6.75	5"	4.71
V*-9-C2ITC	8.00	6"	5.50
V*-9L-C2ITC	8.00	6"	6.56
V*-9-C2JTC	10.00	8"	7.50
V*-9-C2LTC	13.25	10"	10.00

Part Number	Dimensions in Millimeters		
	Flange Size	Tube O.D.	A
V*-9-C2ATC	33.78	19.05	38.10
V*-9-C2BTC	53.85	25.40	52.07
V*-9-C2CTC	69.85	38.10	62.48
V*-9-C2DTC	85.85	50.80	81.79
V*-9-C2ETC	114.30	63.50	85.85
V*-9L-C2ETC	114.30	63.50	104.65
V*-9-C2FTC	117.35	76.20	89.66
V*-9-C2GTC	152.40	101.60	109.73
V*-9L-C2GTC	152.40	101.60	134.87
V*-9-C2HTC	171.45	127.00	119.63
V*-9-C2ITC	203.20	152.40	139.70
V*-9L-C2ITC	203.20	152.40	166.62
V*-9-C2JTC	254.00	203.20	190.50
V*-9-C2LTC	336.55	254.00	254.00

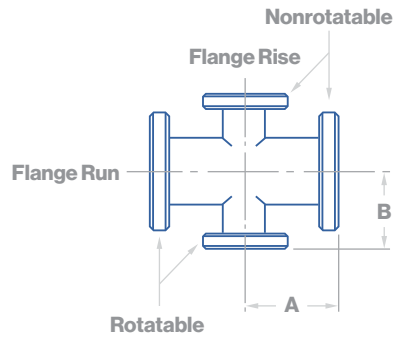
* To include part number material & finish options please reference configurator on pages #120 – 121



Valex
Vacuum
Components

CF 4-Way Reducing Cross

Rotatable, Nonrotatable Flanges



Part Number	Dimensions in Inches					
	Flange Run		Flange Rise		A	B
	Flange Size	Tube O.D.	Flange Size	Tube O.D.		
V*-9R-C2CX2ATC	2.75	1-1/2"	1.33	3/4"	2.46	1.87
V*-9R-C2CX2BTC	2.75	1-1/2"	2.12	1"	2.46	2.29
V*-9R-C2DX2ATC	3.38	2"	1.33	3/4"	3.22	2.13
V*-9R-C2DX2CTC	3.38	2"	2.75	1-1/2"	3.22	2.71
V*-9R-C2EX2CTC	4.50	2-1/2"	2.75	1-1/2"	3.38	2.96
V*-9R-C2EX2DTC	4.50	2-1/2"	3.38	2"	3.38	3.48
V*-9R-C2FX2DTC	4.62	3"	3.38	2"	3.53	3.73
V*-9R-C2FX2ETC	4.62	3"	4.50	2-1/2"	3.53	3.63
V*-9R-C2GX2CTC	6.00	4"	2.75	1-1/2"	4.32	3.71
V*-9R-C2GX2DTC	6.00	4"	3.38	2"	4.32	4.23
V*-9R-C2GX2ETC	6.00	4"	4.50	2-1/2"	4.32	4.13
V*-9R-C2GX2FTC	6.00	4"	4.62	3"	4.32	4.03
V*-9R-C2HX2GTC	6.75	5"	6.00	4"	4.71	4.82
V*-9R-C2IX2CTC	8.00	6"	2.75	1-1/2"	5.50	4.71
V*-9R-C2IX2DTC	8.00	6"	3.38	2"	5.50	5.23
V*-9R-C2IX2ETC	8.00	6"	4.50	2-1/2"	5.50	5.13
V*-9R-C2IX2GTC	8.00	6"	6.00	4"	5.50	5.32
V*-9R-C2JX2ITC	10.00	6"	8.00	6"	7.50	6.50

Part Number	Dimensions in Millimeters					
	Flange Run		Flange Rise		A	B
	Flange Size	Tube O.D.	Flange Size	Tube O.D.		
V*-9R-C2CX2ATC	69.85	38.10	33.78	19.05	62.48	47.50
V*-9R-C2CX2BTC	69.85	38.10	53.85	25.40	62.48	58.17
V*-9R-C2DX2ATC	85.85	50.80	33.78	19.05	81.79	54.10
V*-9R-C2DX2CTC	85.85	50.80	69.85	38.10	81.79	68.83
V*-9R-C2EX2CTC	114.30	63.50	69.85	38.10	85.85	75.18
V*-9R-C2EX2DTC	114.30	63.50	85.85	50.80	85.85	88.39
V*-9R-C2FX2DTC	117.35	76.20	85.85	50.80	89.66	94.74
V*-9R-C2FX2ETC	117.35	76.20	114.30	63.50	89.66	92.20
V*-9R-C2GX2CTC	152.40	101.60	69.85	38.10	109.73	94.23
V*-9R-C2GX2DTC	152.40	101.60	85.85	50.80	109.73	107.44
V*-9R-C2GX2ETC	152.40	101.60	114.30	63.50	109.73	104.90
V*-9R-C2GX2FTC	152.40	101.60	117.35	76.20	109.73	102.36
V*-9R-C2HX2GTC	171.45	127.00	152.40	101.60	119.63	122.43
V*-9R-C2IX2CTC	203.20	152.40	69.85	38.10	139.70	119.63
V*-9R-C2IX2DTC	203.20	152.40	85.85	50.80	139.70	132.84
V*-9R-C2IX2ETC	203.20	152.40	114.30	63.50	139.70	130.30
V*-9R-C2IX2GTC	203.20	152.40	152.40	101.60	139.70	135.13
V*-9R-C2JX2ITC	254.00	152.40	203.20	152.40	190.50	165.10

* To include part number material & finish options please reference configurator on pages #120 - 121

CF
Crosses



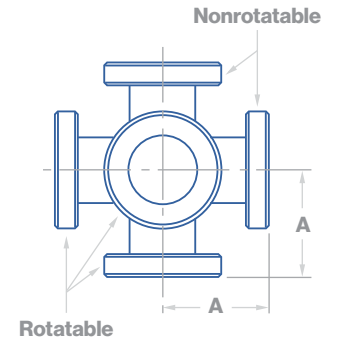
Valex

Vacuum
Components

CF
Crosses

CF 5-Way Cross

Rotatable, Nonrotatable Flanges



Part Number	Dimensions in Inches		
	Flange Size	Tube O.D.	A
V*-9F-C2ATD	1.33	3/4"	1.50
V*-9F-C2BTD	2.12	1"	2.05
V*-9F-C2CTD	2.75	1-1/2"	2.46
V*-9F-C2DTD	3.38	2"	3.22
V*-9F-C2ETD	4.50	2-1/2"	3.38
V*-9F-C2FTD	4.62	3"	3.53
V*-9F-C2GTD	6.00	4"	4.32
V*-9F-C2HTD	6.75	5"	4.71
V*-9F-C2ITD	8.00	6"	5.50
V*-9F-C2JTD	10.00	8"	7.50
V*-9F-C2LTD	13.25	10"	10.00

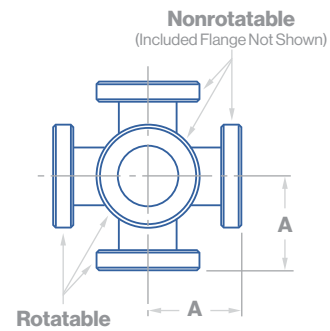
Part Number	Dimensions in Millimeters		
	Flange Size	Tube O.D.	A
V*-9F-C2ATD	33.78	19.05	38.10
V*-9F-C2BTD	53.85	25.40	52.07
V*-9F-C2CTD	69.85	38.10	62.48
V*-9F-C2DTD	85.85	50.80	81.79
V*-9F-C2ETD	114.30	63.50	85.85
V*-9F-C2FTD	117.35	76.20	89.66
V*-9F-C2GTD	152.40	101.60	109.73
V*-9F-C2HTD	171.45	127.00	119.63
V*-9F-C2ITD	203.20	152.40	139.70
V*-9F-C2JTD	254.00	203.20	190.50
V*-9F-C2LTD	336.55	254.00	254.00

* To include part number material & finish options please reference configurator on pages #120 – 121



CF 6-Way Cross

Rotatable, Nonrotatable Flanges



Part Number	Dimensions in Inches		
	Flange Size	Tube O.D.	A
V*-9S-C2ATE	1.33	3/4"	1.50
V*-9S-C2BTE	2.12	1"	2.05
V*-9S-C2CTE	2.75	1-1/2"	2.46
V*-9S-C2DTE	3.38	2"	3.22
V*-9S-C2ETE	4.50	2-1/2"	3.38
V*-9S-C2FTE	4.62	3"	3.53
V*-9S-C2GTE	6.00	4"	4.32
V*-9S-C2HTE	6.75	5"	4.71
V*-9S-C2ITE	8.00	6"	5.50
V*-9S-C2JTE	10.00	8"	7.50
V*-9S-C2LTE	13.25	10"	10.00

Part Number	Dimensions in Millimeters		
	Flange Size	Tube O.D.	A
V*-9S-C2ATE	33.78	19.05	38.10
V*-9S-C2BTE	53.85	25.40	52.07
V*-9S-C2CTE	69.85	38.10	62.48
V*-9S-C2DTE	85.85	50.80	81.79
V*-9S-C2ETE	114.30	63.50	85.85
V*-9S-C2FTE	117.35	76.20	89.66
V*-9S-C2GTE	152.40	101.60	109.73
V*-9S-C2HTE	171.45	127.00	119.63
V*-9S-C2ITE	203.20	152.40	139.70
V*-9S-C2JTE	254.00	203.20	190.50
V*-9S-C2LTE	336.55	254.00	254.00

CF Crosses

* To include part number material & finish options please reference configurator on pages #120 - 121



CF 6-Way Cube Cross

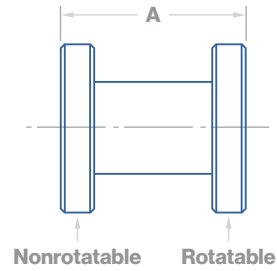
Part Number	Dimensions in Inches & Millimeters			
	Nominal Flange Size		A	
	inch	mm	inch	mm
V*-9C-C2A	1.33	33.78	0.67	17.02
V*-9C-C2B	2.75	69.85	1.37	34.80
V*-9C-C2E	4.50	114.30	2.24	56.90
V*-9C-C2G	6.00	152.40	2.98	75.69
V*-9C-C2I	8.00	203.20	3.98	101.09

* To include part number material & finish options please reference configurator on pages #120 – 121



CF Full Nipple

Nonrotatable x Rotatable



Part Number
V*-6F-C2ATA
V*-6F-C2BTA
V*-6F-C2CTA
V*-6F-C2DTA
V*-6F-C2ETA
V*-6F-C2FTA
V*-6F-C2GTA
V*-6F-C2ITA
V*-6F-C2JTA
V*-6F-C2LTA
V*-6F-C2MTA

Dimensions in Inches & Millimeters						
Flange Size		Tube O.D.		A		
inch	mm	inch	mm	inch	mm	
1.33	33.78	3/4"	19.05	3.00	76.20	
2.12	53.85	1"	25.40	4.10	104.14	
2.75	69.85	1-1/2"	38.10	4.92	124.97	
3.38	85.85	2"	50.80	6.44	163.58	
4.50	114.30	2-1/2"	63.50	6.76	171.70	
4.62	117.35	3"	76.20	7.06	179.32	
6.00	152.40	4"	101.60	8.64	219.46	
8.00	203.20	6"	152.40	11.00	279.40	
10.00	254.00	8"	203.20	15.00	381.00	
13.25	336.55	10"	254.00	20.00	508.00	
14.00	355.60	12"	304.80	20.00	508.00	

CF Nipples

* To include part number material & finish options please reference configurator on pages #120 - 121

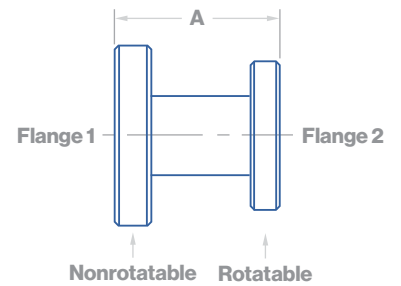


Valex
Vacuum
Components

CF
Nipples

CF Reducing Straight Nipple

Nonrotatable x Rotatable



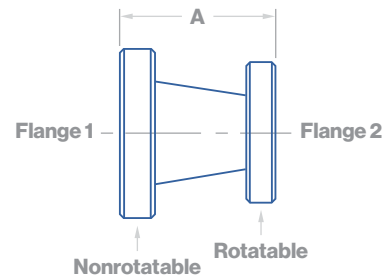
Part Number	Dimensions in Inches & Millimeters					
	Flange 1 O.D.		Flange 2 O.D.		Tube O.D.	
	inch	mm	inch	mm	inch	mm
V*-31S-C2GX2CTA	6.00	152.40	2-3/4"	69.85	1.50	38.10
V*-31S-C2IX2CTA	8.00	203.20	2-3/4"	69.85	1.50	38.10
V*-31S-C2IX2ETA	8.00	203.20	4-1/2"	114.30	2.50	63.50
V*-31S-C2IX2GTA	8.00	203.20	6"	152.40	4.00	101.60
V*-31S-C2JX2CTA	10.00	254.00	2-3/4"	69.85	1.50	38.10
V*-31S-C2JX2ETA	10.00	254.00	4-1/2"	114.30	2.50	63.50
V*-31S-C2JX2GTA	10.00	254.00	6"	152.40	4.00	101.60
V*-31S-C2JX2ITA	10.00	254.00	8"	203.20	6.00	152.40
V*-31S-C2LX2JTA	13.25	336.55	10"	254.00	8.00	203.20
V*-31S-C2MX2KTA	14.00	355.60	12"	304.80	10.00	254.00

* To include part number material & finish options please reference configurator on pages #120 – 121



CF Reducing Conical Nipple

Nonrotatable x Rotatable



CF Nipples

Part Number
V*-31-C2Bx2ATA
V*-31-C2Cx2ATA
V*-31-C2Cx2BTA
V*-31-C2Dx2BTA
V*-31-C2Dx2CTA
V*-31-C2Ex2CTA
V*-31-C2Ex2DTA
V*-31-C2Fx2CTA
V*-31-C2Fx2DTA
V*-31-C2Fx2ETA
V*-31-C2Gx2DTA
V*-31-C2Gx2ETA
V*-31-C2Gx2FTA

Dimensions in Inches				
Flange 1		Flange 2		A
Flange Size	Tube O.D.	Flange Size	Tube O.D.	
2.12	1"	1.33	3/4"	2.04
2.75	1-1/2"	1.33	3/4"	3.08
2.75	1-1/2"	2.12	1"	2.75
3.38	2"	2.12	1"	2.77
3.38	2"	2.75	1-1/2"	2.81
4.50	2-1/2"	2.75	1-1/2"	2.96
4.50	2-1/2"	3.38	2"	2.98
4.62	3"	2.75	1-1/2"	4.12
4.62	3"	3.38	2"	4.13
4.62	3"	4.50	2-1/2"	4.28
6.00	4"	3.38	2"	4.29
6.00	4"	4.50	2-1/2"	4.44
6.00	4"	4.62	3"	4.34

Part Number
V*-31-C2Bx2ATA
V*-31-C2Cx2ATA
V*-31-C2Cx2BTA
V*-31-C2Dx2BTA
V*-31-C2Dx2CTA
V*-31-C2Ex2CTA
V*-31-C2Ex2DTA
V*-31-C2Fx2CTA
V*-31-C2Fx2DTA
V*-31-C2Fx2ETA
V*-31-C2Gx2DTA
V*-31-C2Gx2ETA
V*-31-C2Gx2FTA

Dimensions in Millimeters				
Flange 1		Flange 2		A
Flange Size	Tube O.D.	Flange Size	Tube O.D.	
53.85	25.40	33.78	19.05	51.82
69.85	38.10	33.78	19.05	78.23
69.85	38.10	53.85	25.40	69.85
85.85	50.80	53.85	25.40	70.36
85.85	50.80	69.85	38.10	71.37
114.30	63.50	69.85	38.10	75.18
114.30	63.50	85.85	50.80	75.69
117.35	76.20	69.85	38.10	104.65
117.35	76.20	85.85	50.80	104.90
117.35	76.20	114.30	63.50	108.71
152.40	101.60	85.85	50.80	108.97
152.40	101.60	114.30	63.50	112.78
152.40	101.60	117.35	76.20	110.24

* To include part number material & finish options please reference configurator on pages #120 - 121

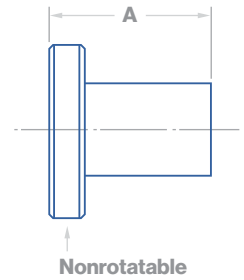


Valex

Vacuum
Components

CF
Nipples

CF Half Nipple



Part Number	Dimensions in Inches & Millimeters					
	Flange Size		Tube O.D.		A	
	inch	mm	inch	mm	inch	mm
V*-6H-C2A	1.33	33.78	3/4"	19.05	1.50	38.10
V*-6H-C2B	2.12	53.85	1"	25.40	2.05	52.07
V*-6H-C2C	2.75	69.85	1-1/2"	38.10	2.46	62.48
V*-6H-C2D	3.38	85.85	2"	50.80	3.22	81.79
V*-6H-C2E	4.50	114.30	2-1/2"	63.50	3.38	85.85
V*-6H-C2F	4.62	117.35	3"	76.20	3.53	89.66
V*-6H-C2G	6.00	152.40	4"	101.60	4.32	109.73
V*-6H-C2I	8.00	203.20	6"	152.40	5.50	139.70
V*-6H-C2J	10.00	254.00	8"	203.20	7.50	190.50
V*-6H-C2L	13.25	336.55	10"	254.00	10.00	254.00
V*-6H-C2M	14.00	355.60	12"	304.80	10.00	254.00

* To include part number material & finish options please reference configurator on pages #120 – 121

CF Plate Nut

Plate nut for 1-1/3" and 2-3/4" flanges

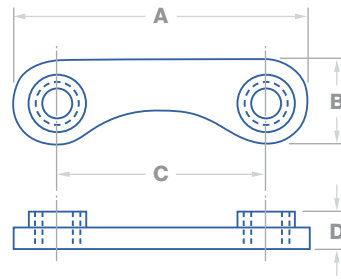
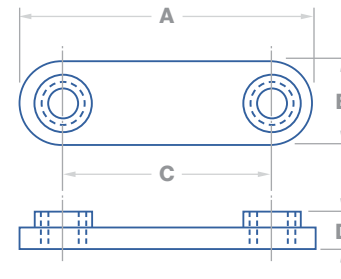


Plate nut for flanges larger than 2-3/4"



Part Number
V*-70P-C2APS
V*-70P-C2CPS
V*-70P-C2CPM
V*-70P-C2DPS
V*-70P-C2EPS
V*-70P-C2EPM
V*-70P-C2FPS
V*-70P-C2GPS
V*-70P-C2GPM
V*-70P-C2IPS
V*-70P-C2IPM
V*-70P-C2JPS

Dimensions in Inches						
Flange Size	Thread Size	A	B	C	D	
1.33"	8-32	0.80	0.30	0.53	0.15	
2.75"	1/4-28	1.59	0.50	1.15	0.18	
2.75"	M6	1.59	0.50	1.15	0.18	
3.38"	5/16-24	1.75	0.50	1.09	0.22	
4.50"	5/16-24	2.03	0.50	1.39	0.22	
4.50"	M8	2.03	0.50	1.39	0.22	
4.62"	5/16-24	1.75	0.50	1.25	0.22	
6"	5/16-24	1.75	0.50	1.00	0.22	
6"	M8	1.75	0.50	1.00	0.22	
8"	5/16-24	1.75	0.50	1.12	0.22	
8"	M8	1.75	0.50	1.12	0.22	
10"	5/16-24	1.75	0.50	1.19	0.22	

Part Number
V*-70P-C2APS
V*-70P-C2CPS
V*-70P-C2CPM
V*-70P-C2DPS
V*-70P-C2EPS
V*-70P-C2EPM
V*-70P-C2FPS
V*-70P-C2GPS
V*-70P-C2GPM
V*-70P-C2IPS
V*-70P-C2IPM
V*-70P-C2JPS

Dimensions in Millimeters						
Flange Size	Thread Size	A	B	C	D	
40	8-32	20.32	7.62	13.46	3.81	
70	1/4-28	40.39	12.70	29.21	4.57	
70	M6	40.39	12.70	29.21	4.57	
86	5/16-24	44.45	12.70	27.69	5.59	
114	5/16-24	51.56	12.70	35.31	5.59	
114	M8	51.56	12.70	35.31	5.59	
117	5/16-24	44.45	12.70	31.75	5.59	
152	5/16-24	44.45	12.70	25.40	5.59	
152	M8	44.45	12.70	25.40	5.59	
200	5/16-24	44.45	12.70	28.45	5.59	
200	M8	44.45	12.70	28.45	5.59	
254	5/16-24	44.45	12.70	30.23	5.59	

* To include part number material & finish options please reference configurator on pages #120 - 121



Valex

Vacuum
Components

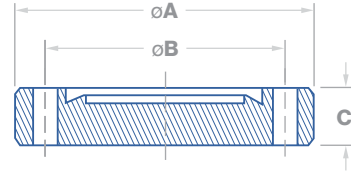
CF Plate Nuts

CF Plate Nut Assembly Kit

With Hex Head Bolts

Part Number	Dimensions in Inches & Millimeters					
	Flange Size	Flange O.D.		Plate Nut Quantity	Stainless Steel Bolts & Washers	
		inch	mm		Quantity	Size
V*-70R-C2APS	1.33	1-1/3"	34	12	24	8-32 x 3/4
V*-70R-C2CPS	2.75	2-3/4"	70	12	24	1/4-28 X 1-1/4
V*-70R-C2DPS	3.38	3-3/8"	86	16	32	5/16-24 X 1-3/4
V*-70R-C2EPS	4.50	4-1/2"	114	16	32	5/16-24 X 2
V*-70R-C2FPS	4.62	4-5/8"	117	20	40	5/16-24 X 2-1/4
V*-70R-C2GPS	6.00	6"	152	16	32	5/16-24 X 2-1/4
V*-70R-C2IPS	8.00	8"	200	16	32	5/16-24 X 2-1/4
V*-70R-C2JPS	10.00	10"	254	24	48	5/16-24 X 2-1/2

* To include part number material & finish options please reference configurator on pages #120 – 121



CF Blank Flange

Nonrotatable, Clearance Bolt Holes

Part Number	Dimensions in Inches					
	Flange Size	A	B	C	Bolt Holes	Diameter
V*-38-C2AFF	1.33"	1.33	1.062	0.300	6	.172
V*-38-C2BFF	2.12"	2.12	1.625	0.469	4	.265
V*-38-C2CFF	2.75"	2.73	2.312	0.500	6	.265
V*-38-C2DFF	3.38"	3.36	2.850	0.687	8	.332
V*-38-C2EFF	4.50"	4.47	3.628	0.687	8	.332
V*-38-C2FFF	4.62"	4.61	4.030	0.812	10	.332
V*-38-C2GFF	6.00"	5.97	5.128	0.781	16	.332
V*-38-C2HFF	6.75"	6.73	5.969	0.844	18	.332
V*-38-C2IFF	8.00"	7.97	7.128	0.937	20	.332
V*-38-C2JFF	10.00"	9.97	9.128	0.968	24	.332
V*-38-C2KFF	12.00"	12.00	11.181	1.125	32	.332
V*-38-C2LFF	13.25"	13.25	12.055	1.125	30	.390
V*-38-C2MFF	14.00"	14.00	12.810	1.125	30	.390
V*-38-C2OFF	16.50"	16.50	15.310	1.125	36	.390

Part Number	Dimensions in Millimeters					
	Flange Size	A	B	C	Bolt Holes	Diameter
V*-38-C2AFF	33.78	33.78	26.98	7.62	6	4.37
V*-38-C2BFF	53.85	53.85	41.28	11.91	4	6.73
V*-38-C2CFF	69.85	69.34	58.73	12.70	6	6.73
V*-38-C2DFF	85.85	85.34	72.39	17.45	8	8.43
V*-38-C2EFF	114.30	113.54	92.15	17.45	8	8.43
V*-38-C2FFF	117.35	117.09	102.36	20.62	10	8.43
V*-38-C2GFF	152.40	151.64	130.25	19.84	16	8.43
V*-38-C2HFF	171.45	170.94	151.61	21.44	18	8.43
V*-38-C2IFF	203.20	202.44	181.05	22.71	20	8.43
V*-38-C2JFF	254.00	253.24	231.85	9.128	24	8.43
V*-38-C2KFF	304.80	304.80	284.00	28.58	32	8.43
V*-38-C2LFF	336.55	336.55	306.20	28.58	30	9.91
V*-38-C2MFF	355.60	355.60	325.37	28.58	30	9.91
V*-38-C2OFF	419.10	419.10	388.87	28.58	36	9.91

* To include part number material & finish options please reference configurator on pages #120 - 121



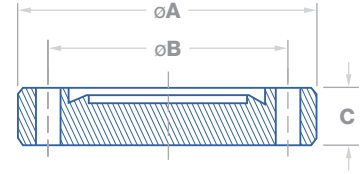
Valex

Vacuum
Components

CF
Flanges

CF Blank Flanges

Nonrotatable, Tapped Bolt Holes



Part Number	Dimensions in Inches					
	Flange Size	A	B	C	Bolt Holes	Diameter
V*-38-C2AFS	1.33"	1.33	1.062	0.300	6	8-32
V*-38-C2BFS	2.12"	2.12	1.625	0.469	4	1/4-28
V*-38-C2CFS	2.75"	2.73	2.312	0.500	6	1/4-28
V*-38-C2DFS	3.38"	3.36	2.850	0.687	8	5/16-24
V*-38-C2EFS	4.50"	4.47	3.628	0.687	8	5/16-24
V*-38-C2FFS	4.62"	4.61	4.030	0.812	10	5/16-24
V*-38-C2GFS	6.00"	5.97	5.128	0.781	16	5/16-24
V*-38-C2HFS	6.75"	6.73	5.969	0.844	18	5/16-24
V*-38-C2IFS	8.00"	7.97	7.128	0.937	20	5/16-24
V*-38-C2JFS	10.00"	9.97	9.128	0.968	24	5/16-24
V*-38-C2KFS	12.00"	12.00	11.181	1.125	32	5/16-24
V*-38-C2LFS	13.25"	13.25	12.055	1.125	30	3/8-24
V*-38-C2MFS	14.00"	14.00	12.810	1.125	30	3/8-24
V*-38-C2OFS	16.50"	16.50	15.310	1.125	36	3/8-24

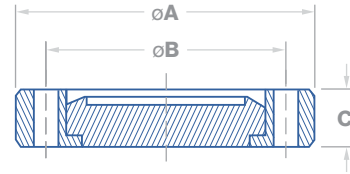
Part Number	Dimensions in Millimeters					
	Flange Size	A	B	C	Bolt Holes	Diameter
V*-38-C2AFS	33.78	33.78	26.98	7.62	6	8-32
V*-38-C2BFS	53.85	53.85	41.28	11.91	4	1/4-28
V*-38-C2CFS	69.85	69.34	58.73	12.70	6	1/4-28
V*-38-C2DFS	85.85	85.34	72.39	17.45	8	5/16-24
V*-38-C2EFS	114.30	113.54	92.15	17.45	8	5/16-24
V*-38-C2FFS	117.35	117.09	102.36	20.62	10	5/16-24
V*-38-C2GFS	152.40	151.64	130.25	19.84	16	5/16-24
V*-38-C2HFS	171.45	170.94	151.61	21.44	18	5/16-24
V*-38-C2IFS	203.20	202.44	181.05	22.71	20	5/16-24
V*-38-C2JFS	254.00	253.24	231.85	24.59	24	5/16-24
V*-38-C2KFS	304.80	304.80	284.00	28.58	32	5/16-24
V*-38-C2LFS	336.55	336.55	306.20	28.58	30	3/8-24
V*-38-C2MFS	355.60	355.60	325.37	28.58	30	3/8-24
V*-38-C2OFS	419.10	419.10	388.87	28.58	36	3/8-24

* To include part number material & finish options please reference configurator on pages #120 - 121

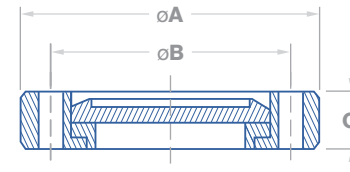


CF Blank Rotatable Flange

Clearance Bolt Holes



Part Number	Dimensions in Inches					
	Flange Size	A	B	C	Bolt Holes	Diameter
V*-38-C2AFR	1.33"	1.33	1.062	0.300	6	.172



Part Number	Dimensions in Inches					
	Flange Size	A	B	C	Bolt Holes	Diameter
V*-38-C2BFR	2.12"	2.12	1.625	0.469	4	0.265
V*-38-C2CFR	2.75"	2.73	2.312	0.500	6	0.265
V*-38-C2DFR	3.38"	3.36	2.850	0.687	8	0.332
V*-38-C2EFR	4.50"	4.47	3.628	0.750	8	0.332
V*-38-C2FFR	4.62"	4.61	4.030	0.812	10	0.332
V*-38-C2GFR	6.00"	5.97	5.128	0.844	16	0.332
V*-38-C2HFR	6.75"	6.73	5.969	0.844	18	0.332
V*-38-C2IFR	8.00"	7.97	7.128	0.937	20	0.332
V*-38-C2JFR	10.00"	9.97	9.128	0.968	24	0.332
V*-38-C2KFR	12.00"	12.00	11.181	1.125	32	0.332
V*-38-C2LFR	13.25"	13.25	12.055	1.125	30	0.390
V*-38-C2MFR	14.00"	14.00	12.810	1.125	30	0.390
V*-38-C2OFR	16.50"	16.50	15.310	1.125	36	0.390

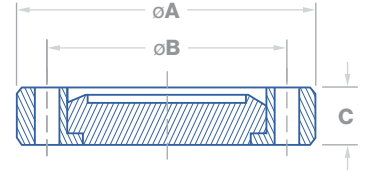
Millimeter dimensions on the following page

* To include part number material & finish options please reference configurator on pages #120 - 121

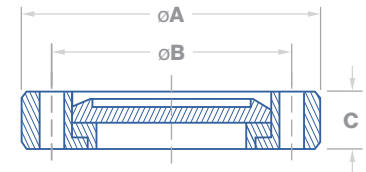


CF Blank Rotatable Flange

Clearance Bolt Holes



Part Number	Dimensions in Millimeters					
	Flange Size	A	B	C	Bolt Holes	Diameter
V*-38-C2AFR	33.78	33.78	26.98	7.62	6	4.369



Part Number	Dimensions in Millimeters					
	Flange Size	A	B	C	Bolt Holes	Diameter
V*-38-C2BFR	53.85	53.85	41.28	11.91	4	6.731
V*-38-C2CFR	69.85	69.34	58.73	12.70	6	6.731
V*-38-C2DFR	85.85	85.34	72.39	17.45	8	8.433
V*-38-C2EFR	114.30	113.54	92.15	19.05	8	8.433
V*-38-C2FFR	117.35	117.09	102.36	20.62	10	8.433
V*-38-C2GFR	152.40	151.64	130.25	21.44	16	8.433
V*-38-C2HFR	171.45	170.94	151.61	21.44	18	8.433
V*-38-C2IFR	203.20	202.44	181.05	22.71	20	8.433
V*-38-C2JFR	254.00	253.24	231.85	24.59	24	8.433
V*-38-C2KFR	304.80	304.80	284.00	11.181	32	8.433
V*-38-C2LFR	336.55	336.55	306.20	28.58	30	9.906
V*-38-C2MFR	355.60	355.60	325.37	28.58	30	9.906
V*-38-C2OFR	419.10	419.10	388.87	28.58	36	9.906

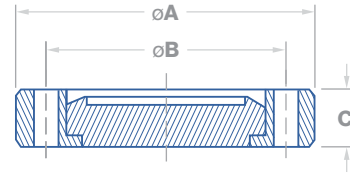
Inch dimensions on the previous page

* To include part number material & finish options please reference configurator on pages #120 – 121

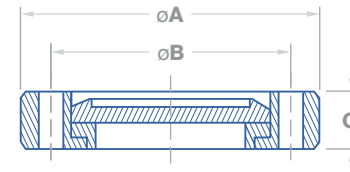


CF Blank Rotatable Flange

Tapped Bolt Holes



Part Number	Dimensions in Inches					
	Flange Size	A	B	C	Bolt Holes	Threads
V*-38H-C2AFR	1.33"	1.33	1.062	0.300	6	8-32



Part Number	Dimensions in Inches					
	Flange Size	A	B	C	Bolt Holes	Threads
V*-38H-C2BFR	2.12"	2.12	1.625	0.469	4	1/4-28
V*-38H-C2CFR	2.75"	2.73	2.312	0.500	6	1/4-28
V*-38H-C2DFR	3.38"	3.36	2.850	0.687	8	5/16-24
V*-38H-C2EFR	4.50"	4.47	3.628	0.750	8	5/16-24
V*-38H-C2FFR	4.62"	4.61	4.030	0.812	10	5/16-24
V*-38H-C2GFR	6.00"	5.97	5.128	0.844	16	5/16-24
V*-38H-C2HFR	6.75"	6.73	5.969	0.844	18	5/16-24
V*-38H-C2IFR	8.00"	7.97	7.128	0.937	20	5/16-24
V*-38H-C2JFR	10.00"	9.97	9.128	0.968	24	5/16-24
V*-38H-C2KFR	12.00"	12.00	11.181	1.125	32	5/16-24
V*-38H-C2LFR	13.25"	13.25	12.055	1.125	30	3/8-24
V*-38H-C2MFR	14.00"	14.00	12.810	1.125	30	3/8-24
V*-38H-C2NFR	16.50"	16.50	15.310	1.125	36	3/8-24

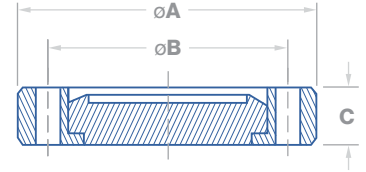
Millimeter dimensions on the following page

* To include part number material & finish options please reference configurator on pages #120 - 121

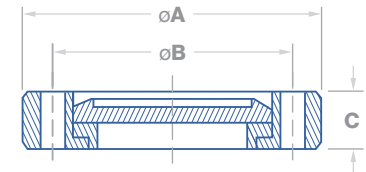


CF Blank Rotatable Flange

Tapped Bolt Holes



Part Number	Dimensions in Millimeters					
	Flange Size	A	B	C	Bolt Holes	Threads
V*-38H-C2BFR	16	33.78	33.78	26.98	7.62	6



Part Number	Dimensions in Millimeters					
	Flange Size	A	B	C	Bolt Holes	Threads
V*-38H-C2BFR	53.85	53.85	41.28	11.91	4	1/4-28
V*-38H-C2CFR	69.85	69.34	58.73	12.70	6	1/4-28
V*-38H-C2DFR	85.85	85.34	72.39	17.45	8	5/16-24
V*-38H-C2EFR	114.30	113.54	92.15	19.05	8	5/16-24
V*-38H-C2FFR	117.35	117.09	102.36	20.62	10	5/16-24
V*-38H-C2GFR	152.40	151.64	130.25	21.44	16	5/16-24
V*-38H-C2HFR	171.45	170.94	151.61	21.44	18	5/16-24
V*-38H-C2IFR	203.20	202.44	181.05	22.71	20	5/16-24
V*-38H-C2JFR	254.00	253.24	231.85	24.59	24	5/16-24
V*-38H-C2KFR	304.80	304.80	284.00	11.181	32	5/16-24
V*-38H-C2LFR	336.55	336.55	306.20	28.58	30	3/8-24
V*-38H-C2MFR	355.60	355.60	325.37	28.58	30	3/8-24
V*-38H-C2NFR	419.10	419.10	388.87	28.58	36	3/8-24

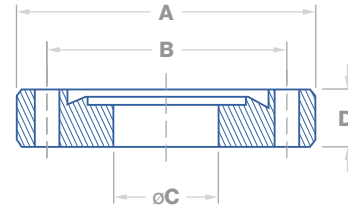
Inch dimensions on the previous page

* To include part number material & finish options please reference configurator on pages #120 – 121



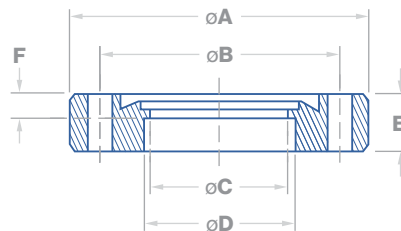
CF Bored Flange

Nonrotatable, Clearance Bolt Holes



Part Number
V*-38B-C2Ax01FF
V*-38B-C2Ax02FF
V*-38B-C2Ax03FF

Dimensions in Inches							
Flange Size	A	B	C	D	Bolt Holes	Diameter	
V*-38B-C2Ax01FF	1.33"	1.33	1.062	0.255	0.300	6	0.172
V*-38B-C2Ax02FF	1.33"	1.33	1.062	0.380	0.300	6	0.172
V*-38B-C2Ax03FF	1.33"	1.33	1.062	0.505	0.300	6	0.172



Part Number
V*-38B-C2Bx01FF
V*-38B-C2Bx03FF
V*-38B-C2Bx04FF
V*-38B-C2Bx05FF
V*-38B-C2Cx01FF
V*-38B-C2Cx03FF
V*-38B-C2Cx04FF
V*-38B-C2Cx05FF
V*-38B-C2Cx06FF
V*-38B-C2Cx07FF
V*-38B-C2Cx08FF
V*-38B-C2Cx09FF
V*-38B-C2Dx07FF
V*-38B-C2Dx10FF
V*-38B-C2Ex07FF
V*-38B-C2Ex10FF
V*-38B-C2Ex12FF
V*-38B-C2Fx14FF
V*-38B-C2Gx18FF
V*-38B-C2Hx22FF
V*-38B-C2Ix26FF
V*-38B-C2Jx26FF
V*-38B-C2Kx34FF
V*-38B-C2Lx34FF
V*-38B-C2Mx38FF
V*-38B-C2Ox46FF

Dimensions in Inches									
Flange Size	A	B	C	D	E	F	Bolt Holes	Diameter	
V*-38B-C2Bx01FF	2.12"	2.12	1.625	0.255	N/A	0.469	N/A	4	0.265
V*-38B-C2Bx03FF	2.12"	2.12	1.625	0.505	N/A	0.469	N/A	4	0.265
V*-38B-C2Bx04FF	2.12"	2.12	1.625	0.688	.760	0.469	0.167	4	0.265
V*-38B-C2Bx05FF	2.12"	2.12	1.625	0.938	1.010	0.469	0.167	4	0.265
V*-38B-C2Cx01FF	2.75"	2.73	2.312	0.255	N/A	0.500	N/A	6	0.265
V*-38B-C2Cx03FF	2.75"	2.73	2.312	0.505	N/A	0.500	N/A	6	0.265
V*-38B-C2Cx04FF	2.75"	2.73	2.312	0.688	.760	0.500	0.209	6	0.265
V*-38B-C2Cx05FF	2.75"	2.73	2.312	0.938	1.010	0.500	0.209	6	0.265
V*-38B-C2Cx06FF	2.75"	2.73	2.312	1.188	1.260	0.500	0.209	6	0.265
V*-38B-C2Cx07FF	2.75"	2.73	2.312	1.438	1.510	0.500	0.209	6	0.265
V*-38B-C2Cx08FF	2.75"	2.73	2.312	1.560	1.635	0.500	0.209	6	0.265
V*-38B-C2Cx09FF	2.75"	2.73	2.312	1.620	1.760	0.500	0.209	6	0.265
V*-38B-C2Dx07FF	3.38"	3.36	2.850	1.438	1.510	0.687	0.225	8	0.332
V*-38B-C2Dx10FF	3.38"	3.36	2.850	1.938	2.010	0.687	0.225	8	0.332
V*-38B-C2Ex07FF	4.50"	4.47	3.628	1.438	1.510	0.687	0.375	8	0.332
V*-38B-C2Ex10FF	4.50"	4.47	3.628	1.938	2.010	0.687	0.375	8	0.332
V*-38B-C2Ex12FF	4.50"	4.47	3.628	2.438	2.510	0.687	0.375	8	0.332
V*-38B-C2Fx14FF	4.62"	4.61	4.030	2.938	3.010	0.812	0.281	10	0.332
V*-38B-C2Gx18FF	6.00"	5.97	5.128	3.910	4.010	0.781	0.438	16	0.332
V*-38B-C2Hx22FF	6.75"	6.73	5.969	4.875	5.010	0.844	0.460	18	0.332
V*-38B-C2Ix26FF	8.00"	7.97	7.128	5.875	6.020	0.937	0.500	20	0.332
V*-38B-C2Jx26FF	10.00"	9.97	9.128	7.875	8.020	0.968	0.500	24	0.332
V*-38B-C2Kx34FF	12.00"	12.00	11.181	9.875	10.020	1.125	0.500	32	0.332
V*-38B-C2Lx34FF	13.25"	13.25	12.055	9.875	10.020	1.125	0.500	30	0.390
V*-38B-C2Mx38FF	14.00"	14.00	12.810	11.875	12.030	1.125	0.500	30	0.390
V*-38B-C2Ox46FF	16.50"	16.50	15.310	13.750	14.020	1.125	0.500	36	0.390

Millimeter dimensions on the following page

* To include part number material & finish options please reference configurator on pages #120 - 121



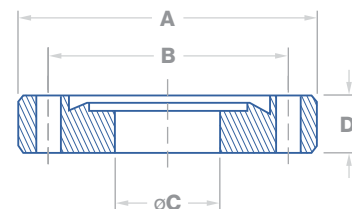
Valex

Vacuum
Components

CF
Flanges

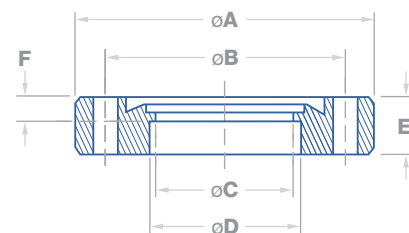
CF Bored Flange

Nonrotatable, Clearance Bolt Holes



Part Number
V*-38B-C2Ax01FF
V*-38B-C2Ax02FF
V*-38B-C2Ax03FF

Dimensions in Millimeters							
Flange Size	A	B	C	D	Bolt Holes	Diameter	
V*-38B-C2Ax01FF	33.78	33.78	26.98	6.48	7.62	6	4.37
V*-38B-C2Ax02FF	33.78	33.78	26.98	9.65	7.62	6	4.37
V*-38B-C2Ax03FF	33.78	33.78	26.98	12.83	7.62	6	4.37



Part Number
V*-38B-C2Bx01FF
V*-38B-C2Bx03FF
V*-38B-C2Bx04FF
V*-38B-C2Bx05FF
V*-38B-C2Cx01FF
V*-38B-C2Cx03FF
V*-38B-C2Cx04FF
V*-38B-C2Cx05FF
V*-38B-C2Cx06FF
V*-38B-C2Cx07FF
V*-38B-C2Cx08FF
V*-38B-C2Cx09FF
V*-38B-C2Dx07FF
V*-38B-C2Dx10FF
V*-38B-C2Ex07FF
V*-38B-C2Ex10FF
V*-38B-C2Ex12FF
V*-38B-C2Fx14FF
V*-38B-C2Gx18FF
V*-38B-C2Hx22FF
V*-38B-C2Ix26FF
V*-38B-C2Jx26FF
V*-38B-C2Kx34FF
V*-38B-C2Lx34FF
V*-38B-C2Mx38FF
V*-38B-C2Ox46FF

Dimensions in Millimeters									
Flange Size	A	B	C	D	E	F	Bolt Holes	Diameter	
V*-38B-C2Bx01FF	53.85	53.85	41.28	6.48	N/A	11.91	N/A	4	6.73
V*-38B-C2Bx03FF	53.85	53.85	41.28	12.83	N/A	11.91	N/A	4	6.73
V*-38B-C2Bx04FF	53.85	53.85	41.28	17.48	19.30	11.91	4.24	4	6.73
V*-38B-C2Bx05FF	53.85	53.85	41.28	23.83	25.65	11.91	4.24	4	6.73
V*-38B-C2Cx01FF	69.85	69.34	58.73	6.48	N/A	12.70	N/A	6	6.73
V*-38B-C2Cx03FF	69.85	69.34	58.73	12.83	N/A	12.70	N/A	6	6.73
V*-38B-C2Cx04FF	69.85	69.34	58.73	17.48	19.30	12.70	5.31	6	6.73
V*-38B-C2Cx05FF	69.85	69.34	58.73	23.83	25.65	12.70	5.31	6	6.73
V*-38B-C2Cx06FF	69.85	69.34	58.73	30.18	32.00	12.70	5.31	6	6.73
V*-38B-C2Cx07FF	68.85	69.34	58.73	36.53	38.35	12.70	5.31	6	6.73
V*-38B-C2Cx08FF	68.85	69.34	58.73	39.62	41.53	12.70	5.31	6	6.73
V*-38B-C2Cx09FF	69.85	69.34	58.73	41.15	44.70	12.70	5.31	6	6.73
V*-38B-C2Dx07FF	85.85	85.34	72.39	36.53	38.35	17.45	5.72	8	8.43
V*-38B-C2Dx10FF	85.85	85.34	72.39	49.23	51.05	17.45	5.72	8	8.43
V*-38B-C2Ex07FF	114.30	113.54	92.15	36.53	38.35	17.45	9.53	8	8.43
V*-38B-C2Ex10FF	114.30	113.54	92.15	49.23	51.05	17.45	9.53	8	8.43
V*-38B-C2Ex12FF	114.30	113.54	92.15	61.93	63.75	17.45	9.53	8	8.43
V*-38B-C2Fx14FF	117.35	117.09	102.36	74.63	76.45	20.62	7.14	10	8.43
V*-38B-C2Gx18FF	152.40	151.64	130.25	99.31	101.85	19.84	11.13	16	8.43
V*-38B-C2Hx22FF	171.45	170.94	151.61	123.83	127.25	21.44	11.68	18	8.43
V*-38B-C2Ix26FF	203.20	202.44	181.05	149.23	152.91	22.71	12.70	20	8.43
V*-38B-C2Jx26FF	254.00	253.24	231.85	200.03	203.71	24.59	12.70	24	8.43
V*-38B-C2Kx34FF	304.80	304.80	284.00	250.83	254.51	28.58	12.70	32	8.43
V*-38B-C2Lx34FF	336.55	336.55	306.20	250.83	254.51	28.58	12.70	30	9.91
V*-38B-C2Mx38FF	355.60	355.60	325.37	301.63	305.56	28.58	12.70	30	9.91
V*-38B-C2Ox46FF	419.10	419.10	388.87	349.25	356.11	28.58	12.70	36	9.91

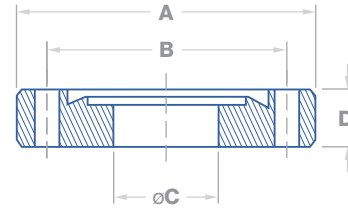
* To include part number material & finish options please reference configurator on pages #120 – 121

Inch dimensions on the previous page



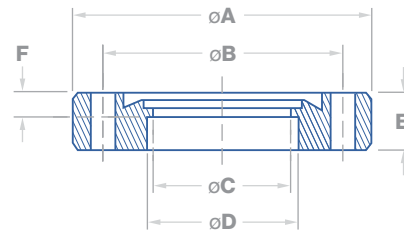
CF Bored Flange

Nonrotatable, Tapped Bolt Holes



Part Number
V*-38B-C2AX01FS
V*-38B-C2AX02FS
V*-38B-C2AX03FS

Dimensions in Inches							
Flange Size	A	B	C	D	Bolt Holes	Thread	
1.33"	1.33	1.062	0.255	0.300	6	8-32	
1.33"	1.33	1.062	0.380	0.300	6	8-32	
1.33"	1.33	1.062	0.505	0.300	6	8-32	



Part Number
V*-38B-C2BX01FS
V*-38B-C2BX03FS
V*-38B-C2BX04FS
V*-38B-C2BX05FS
V*-38B-C2CX01FS
V*-38B-C2CX03FS
V*-38B-C2CX04FS
V*-38B-C2CX05FS
V*-38B-C2CX06FS
V*-38B-C2CX07FS
V*-38B-C2CX08FS
V*-38B-C2CX09FS
V*-38B-C2DX07FS
V*-38B-C2DX10FS
V*-38B-C2EX07FS
V*-38B-C2EX10FS
V*-38B-C2EX12FS
V*-38B-C2FX14FS
V*-38B-C2GX18FS
V*-38B-C2HX22FS
V*-38B-C2IX26FS
V*-38B-C2JX30FS
V*-38B-C2KX34FS
V*-38B-C2LX34FS
V*-38B-C2MX38FS
V*-38B-C2HX46FS

Dimensions in Inches									
Flange Size	A	B	C	D	E	F	Bolt Holes	Thread	
2.12"	2.12	1.625	0.255	N/A	0.469	N/A	4	1/4-28	
2.12"	2.12	1.625	0.505	N/A	0.469	N/A	4	1/4-28	
2.12"	2.12	1.625	0.688	0.760	0.469	0.167	4	1/4-28	
2.12"	2.12	1.625	0.938	1.010	0.469	0.167	4	1/4-28	
2.75"	2.73	2.312	0.255	N/A	0.500	N/A	6	1/4-28	
2.75"	2.73	2.312	0.505	N/A	0.500	N/A	6	1/4-28	
2.75"	2.73	2.312	0.688	0.760	0.500	0.209	6	1/4-28	
2.75"	2.73	2.312	0.938	1.010	0.500	0.209	6	1/4-28	
2.75"	2.73	2.312	1.188	1.260	0.500	0.209	6	1/4-28	
2.75"	2.73	2.312	1.438	1.510	0.500	0.209	6	1/4-28	
2.75"	2.73	2.312	1.560	1.635	0.500	0.209	6	1/4-28	
2.75"	2.73	2.312	1.620	1.760	0.500	0.209	6	1/4-28	
3.38"	3.36	2.850	1.438	1.510	0.687	0.225	8	5/16-24	
3.38"	3.36	2.850	1.938	2.010	0.687	0.225	8	5/16-24	
4.50"	4.47	3.628	1.438	1.510	0.687	0.375	8	5/16-24	
4.50"	4.47	3.628	1.938	2.010	0.687	0.375	8	5/16-24	
4.50"	4.47	3.628	2.438	2.510	0.687	0.375	8	5/16-24	
4.62"	4.61	4.030	2.938	3.010	0.812	0.281	10	5/16-24	
6.00"	5.97	5.128	3.910	4.010	0.781	0.438	16	5/16-24	
6.75"	6.73	5.969	4.875	5.010	0.844	0.460	18	5/16-24	
8.00"	7.97	7.128	5.875	6.020	0.937	0.500	20	5/16-24	
10.00"	9.97	9.128	7.875	8.020	0.968	0.500	24	5/16-24	
12.00"	12.00	11.181	9.875	10.020	1.125	0.500	32	5/16-24	
13.25"	13.25	12.055	9.875	10.020	1.125	0.500	30	3/8-24	
14.00"	14.00	12.810	11.875	12.030	1.125	0.500	30	3/8-24	
16.50"	16.50	15.310	13.750	14.020	1.125	0.500	36	3/8-24	

Millimeter dimensions on the following page

* To include part number material & finish options please reference configurator on pages #120 - 121



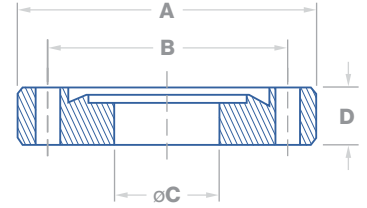
Valex

Vacuum Components

CF Flanges

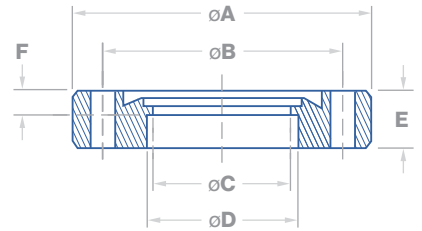
CF Bored Flange

Nonrotatable, Tapped Bolt Holes



Part Number
V*-38B-C2AX01FS
V*-38B-C2AX02FS
V*-38B-C2AX03FS

Dimensions in Millimeters							
Flange Size	A	B	C	D	Bolt Holes	Thread	
V*-38B-C2AX01FS	33.78	33.78	26.98	6.48	7.62	6	8-32
V*-38B-C2AX02FS	33.78	33.78	26.98	9.65	7.62	6	8-32
V*-38B-C2AX03FS	33.78	33.78	26.98	12.83	7.62	6	8-32



Part Number
V*-38B-C2BX01FS
V*-38B-C2BX03FS
V*-38B-C2BX04FS
V*-38B-C2BX05FS
V*-38B-C2CX01FS
V*-38B-C2CX03FS
V*-38B-C2CX04FS
V*-38B-C2CX05FS
V*-38B-C2CX06FS
V*-38B-C2CX07FS
V*-38B-C2CX08FS
V*-38B-C2CX09FS
V*-38B-C2DX07FS
V*-38B-C2DX10FS
V*-38B-C2EX07FS
V*-38B-C2EX10FS
V*-38B-C2EX12FS
V*-38B-C2FX14FS
V*-38B-C2GX18FS
V*-38B-C2HX22FS
V*-38B-C2IX26FS
V*-38B-C2JX30FS
V*-38B-C2KX34FS
V*-38B-C2LX34FS
V*-38B-C2MX38FS
V*-38B-C2HX46FS

Dimensions in Millimeters									
Flange Size	A	B	C	D	E	F	Bolt Holes	Thread	
V*-38B-C2BX01FS	53.85	53.85	41.28	6.48	N/A	11.91	N/A	4	1/4-28
V*-38B-C2BX03FS	53.85	53.85	41.28	12.83	N/A	11.91	N/A	4	1/4-28
V*-38B-C2BX04FS	53.85	53.85	41.28	17.48	19.30	11.91	4.24	4	1/4-28
V*-38B-C2BX05FS	53.85	53.85	41.28	23.83	25.65	11.91	4.24	4	1/4-28
V*-38B-C2CX01FS	69.85	69.34	58.73	6.48	N/A	12.70	N/A	6	1/4-28
V*-38B-C2CX03FS	69.85	69.34	58.73	12.83	N/A	12.70	N/A	6	1/4-28
V*-38B-C2CX04FS	69.85	69.34	58.73	17.48	19.30	12.70	5.31	6	1/4-28
V*-38B-C2CX05FS	69.85	69.34	58.73	23.83	25.65	12.70	5.31	6	1/4-28
V*-38B-C2CX06FS	69.85	69.34	58.73	30.18	32.00	12.70	5.31	6	1/4-28
V*-38B-C2CX07FS	69.85	69.34	58.73	36.53	38.35	12.70	5.31	6	1/4-28
V*-38B-C2CX08FS	69.85	69.34	58.73	39.62	41.53	12.70	5.31	6	1/4-28
V*-38B-C2CX09FS	69.85	69.34	58.73	41.15	44.70	12.70	5.31	6	1/4-28
V*-38B-C2DX07FS	85.85	85.34	72.39	36.53	38.35	17.45	5.72	8	5/16-24
V*-38B-C2DX10FS	85.85	85.34	72.39	49.23	51.05	17.45	5.72	8	5/16-24
V*-38B-C2EX07FS	114.30	113.54	92.15	36.53	38.35	17.45	9.53	8	5/16-24
V*-38B-C2EX10FS	114.30	113.54	92.15	49.23	51.05	17.45	9.53	8	5/16-24
V*-38B-C2EX12FS	114.30	113.54	92.15	61.93	63.75	17.45	9.53	8	5/16-24
V*-38B-C2FX14FS	117.35	117.09	102.36	74.63	76.45	20.62	7.14	10	5/16-24
V*-38B-C2GX18FS	152.40	151.64	130.25	99.31	101.85	19.84	11.13	16	5/16-24
V*-38B-C2HX22FS	171.45	170.94	151.61	123.83	127.25	21.44	11.68	18	5/16-24
V*-38B-C2IX26FS	203.20	202.44	181.05	149.23	152.91	22.71	12.70	20	5/16-24
V*-38B-C2JX30FS	254.00	253.24	231.85	200.03	203.71	24.59	12.70	24	5/16-24
V*-38B-C2KX34FS	304.80	304.80	284.00	250.83	254.51	28.58	12.70	32	5/16-24
V*-38B-C2LX34FS	336.55	336.55	306.20	250.83	254.51	28.58	12.70	30	3/8-24
V*-38B-C2MX38FS	355.60	355.60	325.37	301.63	305.56	28.58	12.70	30	3/8-24
V*-38B-C2HX46FS	419.10	419.10	388.87	349.25	356.11	28.58	12.70	36	3/8-24

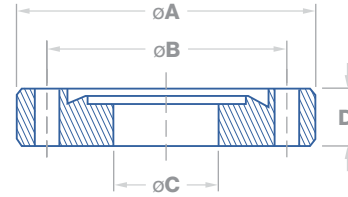
* To include part number material & finish options please reference configurator on pages #120 – 121

Inch dimensions on the previous page



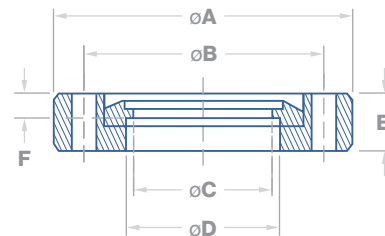
CF Bored Rotatable Flange

Clearance Bolt Holes



Part Number
V*-38B-C2AX01FR
V*-38B-C2AX02FR
V*-38B-C2AX03FR
V*-38B-C2AX04FR

Dimensions in Inches							
Flange Size	A	B	C	D	Bolt Holes	Diameter	
1.33"	1.33	1.062	0.255	0.300	6	0.172	
1.33"	1.33	1.062	0.380	0.300	6	0.172	
1.33"	1.33	1.062	0.505	0.300	6	0.172	
1.33"	1.33	1.062	0.625	0.300	6	0.172	



Part Number
V*-38B-C2BX01FR
V*-38B-C2BX03FR
V*-38B-C2BX04FR
V*-38B-C2BX05FR
V*-38B-C2CX01FR
V*-38B-C2CX03FR
V*-38B-C2CX04FR
V*-38B-C2CX05FR
V*-38B-C2CX06FR
V*-38B-C2CX07FR
V*-38B-C2DX07FR
V*-38B-C2DX10FR
V*-38B-C2EX07FR
V*-38B-C2EX10FR
V*-38B-C2EX12FR
V*-38B-C2FX14FR
V*-38B-C2GX18FR
V*-38B-C2HX22FR
V*-38B-C2IX26FR
V*-38B-C2JX30FR
V*-38B-C2KX34FR
V*-38B-C2LX34FR
V*-38B-C2MX38FR
V*-38B-C2OX46FR

Dimensions in Inches									
Flange Size	A	B	C	D	E	F	Bolt Holes	Diameter	
2.12"	2.12	1.625	0.255	N/A	0.469	N/A	4	0.265	
2.12"	2.12	1.625	0.505	N/A	0.469	N/A	4	0.265	
2.12"	2.12	1.625	0.688	0.760	0.469	0.167	4	0.265	
2.12"	2.12	1.625	0.938	1.010	0.469	0.167	4	0.265	
2.75"	2.73	2.312	0.255	N/A	0.500	N/A	6	0.265	
2.75"	2.73	2.312	0.505	N/A	0.500	N/A	6	0.265	
2.75"	2.73	2.312	0.688	0.760	0.500	0.209	6	0.265	
2.75"	2.73	2.312	0.938	1.010	0.500	0.209	6	0.265	
2.75"	2.73	2.312	1.188	1.260	0.500	0.209	6	0.265	
2.75"	2.73	2.312	1.438	1.510	0.500	0.209	6	0.265	
3.38"	3.36	2.850	1.438	1.510	0.687	0.225	8	0.332	
3.38"	3.36	2.850	1.938	2.010	0.687	0.225	8	0.332	
4.50"	4.47	3.628	1.438	1.510	0.750	0.375	8	0.332	
4.50"	4.47	3.628	1.938	2.010	0.750	0.375	8	0.332	
4.50"	4.47	3.628	2.438	2.510	0.750	0.375	8	0.332	
4.62"	4.61	4.030	2.938	3.010	0.812	0.281	10	0.332	
6.00"	5.97	5.128	3.910	4.010	0.844	0.438	16	0.332	
6.75"	6.73	5.969	4.875	5.010	0.844	0.460	18	0.332	
8.00"	7.97	7.128	5.875	6.020	0.937	0.500	20	0.332	
10.00"	9.97	9.128	7.875	8.020	0.968	0.500	24	0.332	
12.00"	12.00	11.181	9.875	10.020	1.125	0.500	32	0.332	
13.25"	13.25	12.055	9.875	10.020	1.125	0.500	30	0.390	
14.00"	14.00	12.810	11.875	12.030	1.125	0.500	30	0.390	
16.50"	16.50	15.310	13.750	14.020	1.125	0.500	36	0.390	

Millimeter dimensions on the following page

* To include part number material & finish options please reference configurator on pages #120 - 121

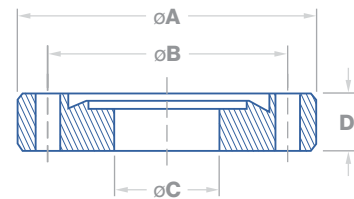


Valex
Vacuum
Components

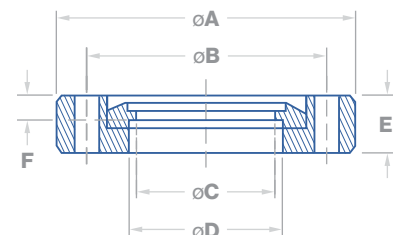
CF
Flanges

CF Bored Rotatable Flange

Clearance Bolt Holes



Part Number	Dimensions in Millimeters						
	Flange Size	A	B	C	D	Bolt Holes	Diameter
V*-38B-C2AX01FR	33.78	33.78	26.98	6.48	7.62	6	4.37
V*-38B-C2AX02FR	33.78	33.78	26.98	9.65	7.62	6	4.37
V*-38B-C2AX03FR	33.78	33.78	26.98	12.83	7.62	6	4.37
V*-38B-C2AX04FR	33.78	33.78	26.98	15.88	7.62	6	4.37



Part Number	Dimensions in Millimeters								
	Flange Size	A	B	C	D	E	F	Bolt Holes	Diameter
V*-38B-C2BX01FR	53.85	53.85	41.28	6.48	N/A	11.91	N/A	4	6.73
V*-38B-C2BX03FR	53.85	53.85	41.28	12.83	N/A	11.91	N/A	4	6.73
V*-38B-C2BX04FR	53.85	53.85	41.28	17.48	19.30	11.91	4.24	4	6.73
V*-38B-C2BX05FR	53.85	53.85	41.28	23.83	25.65	11.91	4.24	4	6.73
V*-38B-C2CX01FR	69.85	69.34	58.73	6.48	N/A	12.70	N/A	6	6.73
V*-38B-C2CX03FR	69.85	69.34	58.73	12.83	N/A	12.70	N/A	6	6.73
V*-38B-C2CX04FR	69.85	69.34	58.73	30.18	19.30	12.70	5.31	6	6.73
V*-38B-C2CX05FR	69.85	69.34	58.73	23.83	25.65	12.70	5.31	6	6.73
V*-38B-C2CX06FR	69.85	69.34	58.73	30.18	32.00	12.70	5.31	6	6.73
V*-38B-C2CX07FR	69.85	69.34	58.73	36.53	38.35	12.70	5.31	6	6.73
V*-38B-C2DX07FR	85.85	85.34	72.39	36.53	38.35	17.45	5.72	8	8.43
V*-38B-C2DX10FR	85.85	85.34	72.39	49.23	51.05	17.45	5.72	8	8.43
V*-38B-C2EX07FR	114.30	113.54	92.15	36.53	38.35	19.05	9.53	8	8.43
V*-38B-C2EX10FR	114.30	113.54	92.15	49.23	51.05	19.05	9.53	8	8.43
V*-38B-C2EX12FR	114.30	113.54	92.15	61.93	63.75	19.05	9.53	8	8.43
V*-38B-C2FX14FR	117.35	117.09	102.36	74.63	76.45	20.62	7.14	10	8.43
V*-38B-C2GX18FR	152.40	151.64	130.25	99.31	101.85	21.44	11.13	16	8.43
V*-38B-C2HX22FR	171.45	170.94	151.61	123.83	127.25	21.44	11.68	18	8.43
V*-38B-C2IX26FR	203.20	202.44	181.05	149.23	152.91	22.71	12.70	20	8.43
V*-38B-C2JX30FR	254.00	253.24	231.85	200.03	203.71	24.59	12.70	24	8.43
V*-38B-C2KX34FR	304.80	304.80	111.81	250.83	254.41	28.58	12.70	32	8.43
V*-38B-C2LX34FR	336.55	336.55	306.20	250.83	254.51	28.58	12.70	30	9.91
V*-38B-C2MX38FR	355.60	355.60	325.37	301.63	305.56	28.58	12.70	30	9.91
V*-38B-C2OX46FR	419.10	419.10	388.87	349.25	356.11	28.58	12.70	36	9.91

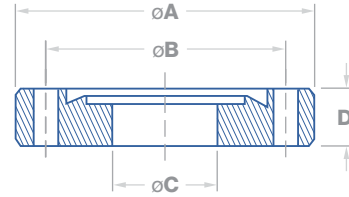
* To include part number material & finish options please reference configurator on pages #120 – 121

Inch dimensions on the previous page

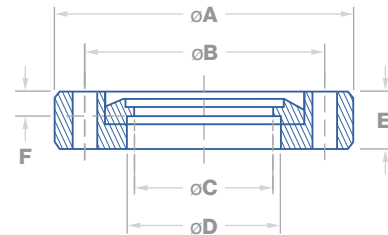


CF Bored Rotatable Flange

Tapped Bolt Holes



Part Number	Dimensions in Inches						
	Flange Size	A	B	C	D	Bolt Holes	Thread
V*-38B-C2AX01FT	1.33"	1.33	1.062	0.255	0.300	6	8-32
V*-38B-C2AX02FT	1.33"	1.33	1.062	0.380	0.300	6	8-32
V*-38B-C2AX03FT	1.33"	1.33	1.062	0.505	0.300	6	8-32
V*-38B-C2AX04FT	1.33"	1.33	1.062	0.625	0.300	6	8-32



Part Number	Dimensions in Inches								
	Flange Size	A	B	C	D	E	F	Bolt Holes	Thread
V*-38B-C2BX01FT	2.12"	2.12	1.625	0.255	N/A	0.469	N/A	4	1/4-28
V*-38B-C2BX03FT	2.12"	2.12	1.625	0.505	N/A	0.469	N/A	4	1/4-28
V*-38B-C2BX04FT	2.12"	2.12	1.625	0.688	0.760	0.469	0.167	4	1/4-28
V*-38B-C2BX05FT	2.12"	2.12	1.625	0.938	1.010	0.469	0.167	4	1/4-28
V*-38B-C2CX01FT	2.75"	2.73	2.312	0.255	N/A	0.500	N/A	6	1/4-28
V*-38B-C2CX03FT	2.75"	2.73	2.312	0.505	N/A	0.500	N/A	6	1/4-28
V*-38B-C2CX04FT	2.75"	2.73	2.312	0.688	0.760	0.500	0.209	6	1/4-28
V*-38B-C2CX05FT	2.75"	2.73	2.312	0.938	1.010	0.500	0.209	6	1/4-28
V*-38B-C2CX06FT	2.75"	2.73	2.312	1.188	1.260	0.500	0.209	6	1/4-28
V*-38B-C2CX07FT	2.75"	2.73	2.312	1.438	1.510	0.500	0.209	6	1/4-28
V*-38B-C2DX07FT	3.38"	3.36	2.850	1.438	1.510	0.687	0.225	8	5/16-24
V*-38B-C2DX10FT	3.38"	3.36	2.850	1.938	2.010	0.687	0.225	8	5/16-24
V*-38B-C2Ex07FT	4.50"	4.47	3.628	1.438	1.510	0.750	0.375	8	5/16-24
V*-38B-C2Ex10FT	4.50"	4.47	3.628	1.938	2.010	0.750	0.375	8	5/16-24
V*-38B-C2Ex12FT	4.50"	4.47	3.628	2.438	2.510	0.750	0.375	8	5/16-24
V*-38B-C2Fx14FT	4.62"	4.61	4.030	2.938	3.010	0.812	0.281	10	5/16-24
V*-38B-C2Gx18FT	6.00"	5.97	5.128	3.910	4.010	0.844	0.438	16	5/16-24
V*-38B-C2Hx22FT	6.75"	6.73	5.969	4.875	5.010	0.844	0.460	18	5/16-24
V*-38B-C2Ix26FT	8.00"	7.97	7.128	5.875	6.020	0.937	0.500	20	5/16-24
V*-38B-C2Jx30FT	10.00"	9.97	9.128	7.875	8.020	0.968	0.500	24	5/16-24
V*-38B-C2Kx34FT	12.00"	12.00	11.181	9.875	10.020	1.125	0.500	32	5/16-24
V*-38B-C2Lx34FT	13.25"	13.25	12.055	9.875	10.020	1.125	0.500	30	3/8-24
V*-38B-C2Mx38FT	14.00"	14.00	12.810	11.875	12.030	1.125	0.500	30	3/8-24
V*-38B-C2Ox46FT	16.50"	16.50	15.310	13.750	14.020	1.125	0.500	36	3/8-24

Millimeter dimensions on the following page

* To include part number material & finish options please reference configurator on pages #120 - 121

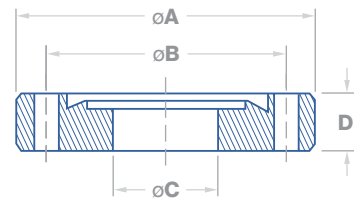


Valex
Vacuum
Components

CF Flanges

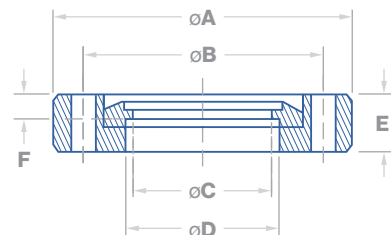
CF Bored Rotatable Flange

Tapped Bolt Holes



Part Number
V*-38B-C2AX01FT
V*-38B-C2AX02FT
V*-38B-C2AX03FT
V*-38B-C2AX04FT

Dimensions in Millimeters							
Flange Size	A	B	C	D	Bolt Holes	Thread	
33.78	33.78	26.98	6.48	7.62	6	8-32	
33.78	33.78	26.98	9.65	7.62	6	8-32	
33.78	33.78	26.98	12.83	7.62	6	8-32	
33.78	33.78	26.98	15.88	7.62	6	8-32	

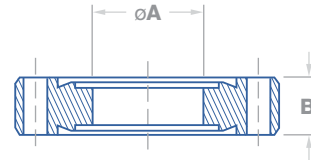


Part Number
V*-38B-C2BX01FT
V*-38B-C2BX03FT
V*-38B-C2BX04FT
V*-38B-C2BX05FT
V*-38B-C2CX01FT
V*-38B-C2CX03FT
V*-38B-C2CX04FT
V*-38B-C2CX05FT
V*-38B-C2CX06FT
V*-38B-C2CX07FT
V*-38B-C2DX07FT
V*-38B-C2DX10FT
V*-38B-C2EX07FT
V*-38B-C2Ex10FT
V*-38B-C2Ex12FT
V*-38B-C2Fx14FT
V*-38B-C2Gx18FT
V*-38B-C2Hx22FT
V*-38B-C2Ix26FT
V*-38B-C2Jx30FT
V*-38B-C2Kx34FT
V*-38B-C2Lx34FT
V*-38B-C2Mx38FT
V*-38B-C2Ox46FT

Dimensions in Millimeters									
Flange Size	A	B	C	D	E	F	Bolt Holes	Thread	
53.85	53.85	41.28	6.48	N/A	11.91	N/A	4	1/4-28	
53.85	53.85	41.28	12.83	N/A	11.91	N/A	4	1/4-28	
53.85	53.85	41.28	17.48	19.30	11.91	4.24	4	1/4-28	
53.85	53.85	41.28	23.83	25.65	11.91	4.24	4	1/4-28	
69.85	69.34	58.73	6.48	N/A	12.70	N/A	6	1/4-28	
69.85	69.34	58.73	12.83	N/A	12.70	N/A	6	1/4-28	
69.85	69.34	58.73	30.18	19.30	12.70	5.31	6	1/4-28	
69.85	69.34	58.73	23.83	25.65	12.70	5.31	6	1/4-28	
69.85	69.34	58.73	36.53	38.35	12.70	5.31	6	1/4-28	
85.85	85.34	72.39	36.53	38.35	17.45	5.72	8	5/16-24	
85.85	85.34	72.39	49.23	51.05	17.45	5.72	8	5/16-24	
114.30	113.54	92.15	36.53	38.35	19.05	9.53	8	5/16-24	
114.30	113.54	92.15	49.23	51.05	19.05	9.53	8	5/16-24	
114.30	113.54	92.15	61.93	63.75	19.05	9.53	8	5/16-24	
117.35	117.09	102.36	74.63	76.45	20.62	7.14	10	5/16-24	
152.40	151.64	130.25	99.31	101.85	21.44	11.13	16	5/16-24	
171.45	170.94	151.61	123.83	127.25	21.44	11.68	18	5/16-24	
203.20	202.44	181.05	149.23	152.91	22.71	12.70	20	5/16-24	
254.00	253.24	231.85	200.03	203.71	24.59	12.70	24	5/16-24	
304.80	304.80	11.81	250.83	254.41	28.58	12.70	32	5/16-24	
336.55	336.55	306.20	250.83	254.51	28.58	12.70	30	3/8-24	
355.60	355.60	325.37	301.63	305.56	28.58	12.70	30	3/8-24	
419.10	419.10	388.87	349.25	356.11	28.58	12.70	36	3/8-24	

* To include part number material & finish options please reference configurator on pages #120 - 121

Inch dimensions on the previous page



CF Double-Sided Flange

Nonrotatable, with Clearance Bolt Holes

CF Flanges

Part Number	Dimensions in Inches & Millimeters						
	Nominal O.D.		Made From Flange	A		B	
	inch	mm		inch	mm	inch	mm
V*-38M-C2AX00	1-1/3	34	V*-38-C2AFF	N/A	N/A	0.300	7.62
V*-38M-C2AX01	1-1/3	34	V*-38-C2AFF	0.255	6.48	0.300	7.62
V*-38M-C2AX02	1-1/3	34	V*-38-C2AFF	0.380	9.65	0.300	7.62
V*-38M-C2AX03	1-1/3	34	V*-38-C2AFF	0.505	12.83	0.300	7.62
V*-38M-C2AX04	1-1/3	34	V*-38-C2AFF	0.630	16.00	0.300	7.62
V*-38M-C2BX00	2-1/8	54	V*-38-C2BFF	N/A	N/A	0.470	11.94
V*-38M-C2BX05	2-1/8	54	V*-38-C2BFF	1.010	25.65	0.470	11.94
V*-38M-C2BX00	2-1/8	54	V*-38-C2BFF	N/A	N/A	0.500	12.70
V*-38M-C2CX01	2-3/4	70	V*-38-C2CFF	0.255	6.48	0.500	12.70
V*-38M-C2CX03	2-3/4	70	V*-38-C2CFF	0.505	12.83	0.500	12.70
V*-38M-C2CX04	2-3/4	70	V*-38-C2CFF	0.760	19.30	0.500	12.70
V*-38M-C2CX05	2-3/4	70	V*-38-C2CFF	1.010	25.65	0.500	12.70
V*-38M-C2CX06	2-3/4	70	V*-38-C2CFF	1.260	32.00	0.500	12.70
V*-38M-C2CX07	2-3/4	70	V*-38-C2CFF	1.510	38.35	0.500	12.70
V*-38M-C2DX00	3-3/8	86	V*-38-C2DFF	N/A	N/A	0.687	17.45
V*-38M-C2DX07	3-3/8	86	V*-38-C2DFF	1.510	38.35	0.687	17.45
V*-38M-C2DX10	3-3/8	86	V*-38-C2DFF	2.010	51.05	0.687	17.45
V*-38M-C2EX00	4-1/2	114	V*-38-C2EFF	N/A	N/A	0.687	17.45
V*-38M-C2EX07	4-1/2	114	V*-38-C2EFF	1.510	38.35	0.687	17.45
V*-38M-C2EX10	4-1/2	114	V*-38-C2EFF	2.010	51.05	0.687	17.45
V*-38M-C2EX12	4-1/2	114	V*-38-C2EFF	2.510	63.75	0.687	17.45
V*-38M-C2FX00	4-5/8	117	V*-38-C2FFF	N/A	N/A	0.812	20.62
V*-38M-C2FX14	4-5/8	117	V*-38-C2FFF	3.010	76.45	0.812	20.62
V*-38M-C2GX00	6	152	V*-38-C2GFF	N/A	N/A	0.781	19.84
V*-38M-C2GX22	6	152	V*-38-C2GFF	4.010	101.85	0.781	19.84
V*-38M-C2HX00	6-3/4	171	V*-38-C2HFF	N/A	N/A	0.844	21.44
V*-38M-C2HX22	6-3/4	171	V*-38-C2HFF	5.010	127.25	0.844	21.44
V*-38M-C2IX00	8	203	V*-38-C2IFF	N/A	N/A	0.875	22.23
V*-38M-C2IX26	8	203	V*-38-C2IFF	6.020	152.91	0.875	22.23
V*-38M-C2JX00	10	254	V*-38-C2JFF	N/A	N/A	0.968	24.59
V*-38M-C2JX30	10	254	V*-38-C2JFF	8.020	203.71	0.968	24.59
V*-38M-C2LX00	13-1/4	337	V*-38-C2LFF	N/A	N/A	1.125	28.58
V*-38M-C2LX34	13-1/4	337	V*-38-C2LFF	10.020	254.51	1.125	28.58
V*-38M-C2MX00	14	356	V*-38-C2MFF	N/A	N/A	1.125	28.58
V*-38M-C2MX38	14	356	V*-38-C2MFF	12.020	305.31	1.125	28.58

* To include part number material & finish options please reference configurator on pages #120 - 121



Valex

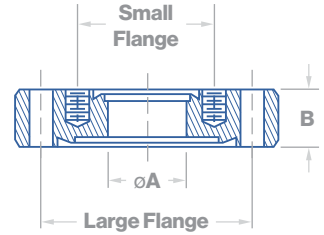
Vacuum
Components

CF Flanges

CF Zero Length Reducer Flange

Large Flange: Nonrotatable, Tapped Bolt Holes

Small Flange: Nonrotatable, Tapped Bolt Holes



Part Number	Dimensions in Inches					
	Large Flange Part Number	Small Flange Part Number	Lg. Flange Size	Sm. Flange Size	A	B
V*-38Z-C2BX2AFF	V*-38H-C2ABS	V*-38H-C2AFS	2.12	1.33	0.625	0.470
V*-38Z-C2CX2BFF	V*-38H-C2CBS	V*-38H-C2BFS	2.75	2.12	1.000	0.500
V*-38Z-C2DX2BFF	V*-38H-C2DBS	V*-38H-C2BFS	3.38	2.12	1.000	0.687
V*-38Z-C2DX2CFF	V*-38H-C2DBS	V*-38H-C2CFS	3.38	2.75	1.500	0.687
V*-38Z-C2EX2DFF	V*-38H-C2EBS	V*-38H-C2DFS	4.50	3.38	2.000	0.687
V*-38Z-C2GX2FFF	V*-38H-C2GBS	V*-38H-C2FFS	6.00	4.62	3.000	0.781
V*-38Z-C2HX2GFF	V*-38H-C2HBS	V*-38H-C2GFS	6.75	6.00	4.000	0.844
V*-38Z-C2IX2HFF	V*-38H-C2IBS	V*-38H-C2HFS	8.00	6.75	5.000	0.875

Part Number	Dimensions in Millimeters					
	Large Flange Part Number	Small Flange Part Number	Lg. Flange Size	Sm. Flange Size	A	B
V*-38Z-C2BX2AFF	V*-38H-C2ABS	V*-38H-C2AFS	53.85	33.78	15.88	11.94
V*-38Z-C2CX2BFF	V*-38H-C2CBS	V*-38H-C2BFS	69.85	53.85	25.40	12.70
V*-38Z-C2DX2BFF	V*-38H-C2DBS	V*-38H-C2BFS	85.85	53.85	25.40	17.45
V*-38Z-C2DX2CFF	V*-38H-C2DBS	V*-38H-C2CFS	85.85	69.85	38.10	17.45
V*-38Z-C2EX2DFF	V*-38H-C2EBS	V*-38H-C2DFS	114.30	85.85	50.80	17.45
V*-38Z-C2GX2FFF	V*-38H-C2GBS	V*-38H-C2FFS	152.40	117.35	76.20	19.84
V*-38Z-C2HX2GFF	V*-38H-C2HBS	V*-38H-C2GFS	171.45	152.40	101.60	21.44
V*-38Z-C2IX2HFF	V*-38H-C2IBS	V*-38H-C2HFS	203.20	171.45	127.00	22.23

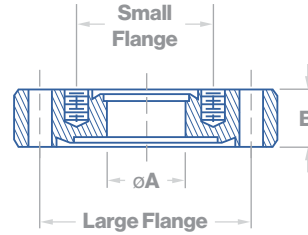
* To include part number material & finish options please reference configurator on pages #120 – 121



CF Zero Length Reducer Flange

Small Flange: Nonrotatable, Tapped Bolt Holes

Large Flange: Nonrotatable, Clearance Bolt Holes



Part Number	Dimensions in Inches					
	Large Flange		Small Flange		A	B
	Part Number	DN	Part Number	DN		
VD-38ZRC-212X133	VD-38BF-212	25	VD-38BFT-133	16	0.625	0.500
VD-38ZRC-338X133	VD-38BF-338	50	VD-38BFT-133	16	15.88	17.45
VD-38ZRC-450X133	VD-38BF-450	63	VD-38BFT-133	16	0.625	0.687
VD-38ZRC-462X133	VD-38BF-462	80	VD-38BFT-133	16	0.625	0.812
VD-38ZRC-600X133	VD-38BF-600	100	VD-38BFT-133	16	0.625	0.781
VD-38ZRC-675X133	VD-38BF-675	130	VD-38BFT-133	16	0.625	0.844
VD-38ZRC-800X133	VD-38BF-800	160	VD-38BFT-133	16	0.625	0.875
VD-38ZRC-1000X133	VD-38BF-1000	200	VD-38BFT-133	16	0.625	0.968
VD-38ZRC-1325X133	VD-38BF-1325	270	VD-38BFT-133	16	0.625	1.125
VD-38ZRC-450X212	VD-38BF-450	63	VD-38BFT-212	25	1.000	0.687
VD-38ZRC-462X212	VD-38BF-462	80	VD-38BFT-212	25	1.000	0.812
VD-38ZRC-600X212	VD-38BF-600	100	VD-38BFT-212	25	1.000	0.781
VD-38ZRC-675X212	VD-38BF-675	130	VD-38BFT-212	25	1.000	0.844
VD-38ZRC-800X212	VD-38BF-800	160	VD-38BFT-212	25	1.000	0.875
VD-38ZRC-1000X212	VD-38BF-1000	200	VD-38BFT-212	25	1.000	0.968
VD-38ZRC-1325X212	VD-38BF-1325	270	VD-38BFT-212	25	1.000	1.125
VD-38ZRC-450X275	VD-38BF-450	63	VD-38BFT-275	40	1.500	0.687
VD-38ZRC-462X275	VD-38BF-462	80	VD-38BFT-275	40	1.500	0.812
VD-38ZRC-600X275	VD-38BF-600	100	VD-38BFT-275	40	1.500	0.781
VD-38ZRC-675X275	VD-38BF-675	130	VD-38BFT-275	40	1.500	0.844
VD-38ZRC-800X275	VD-38BF-800	160	VD-38BFT-275	40	1.500	0.875
VD-38ZRC-1000X275	VD-38BF-1000	200	VD-38BFT-275	40	1.500	0.968
VD-38ZRC-1325X275	VD-38BF-1325	270	VD-38BFT-275	40	1.500	1.125
VD-38ZRC-462X338	VD-38BF-462	80	VD-38BFT-338	50	2.000	0.812
VD-38ZRC-600X338	VD-38BF-600	100	VD-38BFT-338	50	2.000	0.781
VD-38ZRC-675X338	VD-38BF-675	130	VD-38BFT-338	50	2.000	0.844
VD-38ZRC-800X338	VD-38BF-800	160	VD-38BFT-338	50	2.000	0.875
VD-38ZRC-1000X338	VD-38BF-1000	200	VD-38BFT-338	50	2.000	0.968
VD-38ZRC-1325X338	VD-38BF-1325	270	VD-38BFT-338	50	2.000	1.125
VD-38ZRC-600X450	VD-38BF-600	100	VD-38BFT-450	63	2.500	0.781
VD-38ZRC-675X450	VD-38BF-675	130	VD-38BFT-450	63	2.500	0.844
VD-38ZRC-800X450	VD-38BF-800	160	VD-38BFT-450	63	2.500	0.875
VD-38ZRC-1000X450	VD-38BF-1000	200	VD-38BFT-450	63	2.500	0.968
VD-38ZRC-1325X450	VD-38BF-1325	270	VD-38BFT-450	63	2.500	1.125
VD-38ZRC-675X462	VD-38BF-675	130	VD-38BFT-462	80	3.000	0.844
VD-38ZRC-800X462	VD-38BF-800	160	VD-38BFT-462	80	3.000	0.875
VD-38ZRC-1000X462	VD-38BF-1000	200	VD-38BFT-462	80	3.000	0.968
VD-38ZRC-1325X462	VD-38BF-1325	270	VD-38BFT-462	80	3.000	1.125
VD-38ZRC-800X600	VD-38BF-800	160	VD-38BFT-600	100	4.000	0.875
VD-38ZRC-1000X600	VD-38BF-1000	200	VD-38BFT-600	100	4.000	0.968
VD-38ZRC-1325X600	VD-38BF-1325	270	VD-38BFT-600	100	4.000	1.125
VD-38ZRC-1000X675	VD-38BF-1000	200	VD-38BFT-675	130	5.000	0.968

CF Flanges

* To include part number material & finish options please reference configurator on pages #120 - 121



Valex

Vacuum
Components

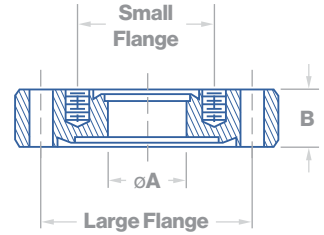
CF
Flanges

CF Zero Length Reducer Flanges

Small Flange: Nonrotatable, Tapped Bolt Holes

Large Flange: Nonrotatable, Clearance Bolt Holes

CONTINUED



Part Number	Dimensions in Inches					
	Large Flange		Small Flange		A	B
	Part Number	DN	Part Number	DN		
304L BA						
VD-38ZRC-1325X675	VD-38BF-1325	270	VD-38BFT-675	130	5.00	1.125
VD-38ZRC-1000X800	VD-38BF-1000	200	VD-38BFT-800	160	6.00	0.968
VD-38ZRC-1325X800	VD-38BF-1325	270	VD-38BFT-800	160	6.00	1.125
VD-38ZRC-1325X1000	VD-38BF-1325	270	VD-38BFT-1000	200	8.00	1.125

Millimeter dimensions on the following page

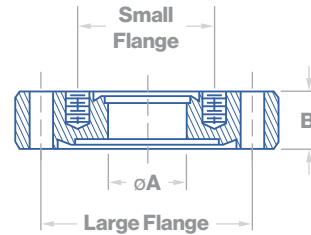
* To include part number material & finish options please reference configurator on pages #120 – 121



CF Zero Length Reducer Flange

Small Flange: Nonrotatable, Tapped Bolt Holes

Large Flange: Nonrotatable, Clearance Bolt Holes



Part Number	Dimensions in Millimeters					
	Large Flange		Small Flange		A	B
	Part Number	DN	Part Number	DN		
304L BA						
VD-38ZRC-212X133	VD-38BF-212	25	VD-38BFT-133	16	15.88	12.70
VD-38ZRC-338X133	VD-38BF-338	50	VD-38BFT-133	16	0.687	17.45
VD-38ZRC-450X133	VD-38BF-450	63	VD-38BFT-133	16	15.88	17.45
VD-38ZRC-462X133	VD-38BF-462	80	VD-38BFT-133	16	15.88	20.62
VD-38ZRC-600X133	VD-38BF-600	100	VD-38BFT-133	16	15.88	19.84
VD-38ZRC-675X133	VD-38BF-675	130	VD-38BFT-133	16	15.88	21.44
VD-38ZRC-800X133	VD-38BF-800	160	VD-38BFT-133	16	15.88	22.23
VD-38ZRC-1000X133	VD-38BF-1000	200	VD-38BFT-133	16	15.88	24.59
VD-38ZRC-1325X133	VD-38BF-1325	270	VD-38BFT-133	16	15.88	28.58
VD-38ZRC-450X212	VD-38BF-450	63	VD-38BFT-212	25	25.40	17.45
VD-38ZRC-462X212	VD-38BF-462	80	VD-38BFT-212	25	25.40	20.62
VD-38ZRC-600X212	VD-38BF-600	100	VD-38BFT-212	25	25.40	19.84
VD-38ZRC-675X212	VD-38BF-675	130	VD-38BFT-212	25	25.40	21.44
VD-38ZRC-800X212	VD-38BF-800	160	VD-38BFT-212	25	25.40	22.23
VD-38ZRC-1000X212	VD-38BF-1000	200	VD-38BFT-212	25	25.40	24.59
VD-38ZRC-1325X212	VD-38BF-1325	270	VD-38BFT-212	25	25.40	28.58
VD-38ZRC-450X275	VD-38BF-450	63	VD-38BFT-275	40	38.10	17.45
VD-38ZRC-462X275	VD-38BF-462	80	VD-38BFT-275	40	38.10	20.62
VD-38ZRC-600X275	VD-38BF-600	100	VD-38BFT-275	40	38.10	19.84
VD-38ZRC-675X275	VD-38BF-675	130	VD-38BFT-275	40	38.10	21.44
VD-38ZRC-800X275	VD-38BF-800	160	VD-38BFT-275	40	38.10	22.23
VD-38ZRC-1000X275	VD-38BF-1000	200	VD-38BFT-275	40	38.10	24.59
VD-38ZRC-1325X275	VD-38BF-1325	270	VD-38BFT-275	40	38.10	28.58
VD-38ZRC-462X338	VD-38BF-462	80	VD-38BFT-338	50	50.80	20.62
VD-38ZRC-600X338	VD-38BF-600	100	VD-38BFT-338	50	50.80	19.84
VD-38ZRC-675X338	VD-38BF-675	130	VD-38BFT-338	50	50.80	21.44
VD-38ZRC-800X338	VD-38BF-800	160	VD-38BFT-338	50	50.80	22.23
VD-38ZRC-1000X338	VD-38BF-1000	200	VD-38BFT-338	50	50.80	24.59
VD-38ZRC-1325X338	VD-38BF-1325	270	VD-38BFT-338	50	50.80	28.58
VD-38ZRC-600X450	VD-38BF-600	100	VD-38BFT-450	63	63.50	19.84
VD-38ZRC-675X450	VD-38BF-675	130	VD-38BFT-450	63	63.50	21.44
VD-38ZRC-800X450	VD-38BF-800	160	VD-38BFT-450	63	63.50	22.23
VD-38ZRC-1000X450	VD-38BF-1000	200	VD-38BFT-450	63	63.50	24.59
VD-38ZRC-1325X450	VD-38BF-1325	270	VD-38BFT-450	63	63.50	28.58
VD-38ZRC-675X462	VD-38BF-675	130	VD-38BFT-462	80	76.20	21.44
VD-38ZRC-800X462	VD-38BF-800	160	VD-38BFT-462	80	76.20	22.23
VD-38ZRC-1000X462	VD-38BF-1000	200	VD-38BFT-462	80	76.20	24.59
VD-38ZRC-1325X462	VD-38BF-1325	270	VD-38BFT-462	80	76.20	28.58
VD-38ZRC-800X600	VD-38BF-800	160	VD-38BFT-600	100	101.60	22.23
VD-38ZRC-1000X600	VD-38BF-1000	200	VD-38BFT-600	100	101.60	24.59
VD-38ZRC-1325X600	VD-38BF-1325	270	VD-38BFT-600	100	101.60	28.58
VD-38ZRC-1000X675	VD-38BF-1000	200	VD-38BFT-675	130	127.00	24.59

Inch dimensions on the following page

* To include part number material & finish options please reference configurator on pages #120 - 121



Valex

Vacuum
Components

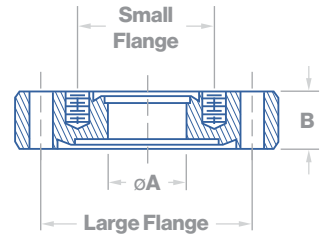
CF
Flanges

CF Zero Length Reducer Flanges

Small Flange: Nonrotatable, Tapped Bolt Holes

Large Flange: Nonrotatable, Clearance Bolt Holes

CONTINUED

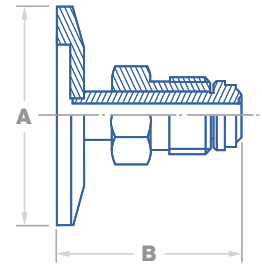


Part Number	Dimensions in Millimeters					
	Large Flange		Small Flange		A	B
	Part Number	DN	Part Number	DN		
304L BA						
VD-38ZRC-1325X675	VD-38BF-1325	270	VD-38BFT-675	130	127.00	28.58
VD-38ZRC-1000X800	VD-38BF-1000	200	VD-38BFT-800	160	152.40	24.59
VD-38ZRC-1325X800	VD-38BF-1325	270	VD-38BFT-800	160	152.40	28.58
VD-38ZRC-1325X1000	VD-38BF-1325	270	VD-38BFT-1000	200	203.20	28.58

* To include part number material & finish options please reference configurator on pages #120 – 121

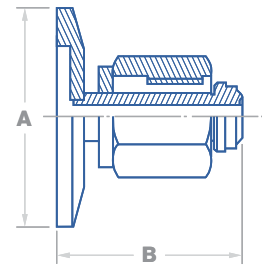


NW Face Seal Male Adaptor



Part Number	Dimensions in Inches & Millimeters						
	Flange Size		Face Seal Size	A		B	
	NW	inch	inch	inch	mm	inch	mm
V*-34V-N1B01	16	3/4"	1/4"	1.180	29.972	1.460	37.084
V*-34V-N1B03	16	3/4"	1/2"	1.180	29.972	1.650	41.910
V*-34V-N1C01	25	1"	1/4"	1.575	40.005	1.460	37.084
V*-34V-N1C03	25	1"	1/2"	1.575	40.005	1.650	41.910
V*-34V-N1D01	40	1-1/2"	1/4"	2.160	54.864	1.460	37.084
V*-34V-N1D03	40	1-1/2"	1/2"	2.160	54.864	1.650	41.910
V*-34V-N1E01	50	2"	1/4"	2.950	74.930	1.460	37.084
V*-34V-N1E03	50	2"	1/2"	2.950	74.930	1.650	41.910

NW Face Seal Female Adaptor

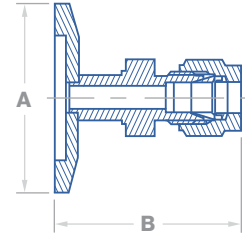


Part Number	Dimensions in Inches & Millimeters						
	Flange Size		Face Seal Size	A		B	
	NW	inch	inch	inch	mm	inch	mm
V*-34A-N1B01	16	3/4"	1/4"	1.180	29.972	1.460	37.084
V*-34A-N1B03	16	3/4"	1/2"	1.180	29.972	1.650	41.910
V*-34A-N1C01	25	1"	1/4"	1.575	40.005	1.460	37.084
V*-34A-N1C03	25	1"	1/2"	1.575	40.005	1.650	41.910
V*-34A-N1D01	40	1-1/2"	1/4"	2.160	54.864	1.460	37.084
V*-34A-N1D03	40	1-1/2"	1/2"	2.160	54.864	1.650	41.910
V*-34A-N1E01	50	2"	1/4"	2.950	74.930	1.460	37.084
V*-34A-N1E03	50	2"	1/2"	2.950	74.930	1.650	41.910

* To include part number material & finish options please reference configurator on pages #120 – 121

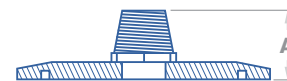


NW Compression Adaptor



Part Number	Dimensions in Inches & Millimeters						
	Flange Size		Compression	A		B	
	NW	inch	inch	inch	mm	inch	mm
V*-34C-N1B01	16	3/4"	1/4"	1.180	29.972	1.47	37.338
V*-34C-N1B03	16	3/4"	1/2"	1.180	29.972	1.63	41.402
V*-34C-N1C01	25	1"	1/4"	1.575	40.005	1.47	37.338
V*-34C-N1C03	25	1"	1/2"	1.575	40.005	1.63	41.402
V*-34C-N1D01	40	1-1/2"	1/4"	2.160	54.864	1.47	37.338
V*-34C-N1D03	40	1-1/2"	1/2"	2.160	54.864	1.63	41.402
V*-34C-N1E01	50	2"	1/4"	2.950	74.930	1.47	37.338
V*-34C-N1E03	50	2"	1/2"	2.950	74.930	1.63	41.402

NW-NPT Male Adaptor



Part Number	Dimensions in Inches & Millimeters				
	Flange Size		NPT	A	
	NW	inch	inch	inch	mm
V*-34M-N1B00	16	3/4"	1/8"	0.88	22.352
V*-34M-N1B01	16	3/4"	1/4"	1.09	27.686
V*-34M-N1C01	25	1"	1/4"	1.09	27.686
V*-34M-N1D01	40	1-1/2"	1/4"	1.09	27.686
V*-34M-N1D03	40	1-1/2"	1/2"	1.34	34.036
V*-34M-N1E01	50	2"	1/4"	1.09	27.686
V*-34M-N1E03	50	2"	1/2"	1.34	34.036

* To include part number material & finish options please reference configurator on pages #120 - 121

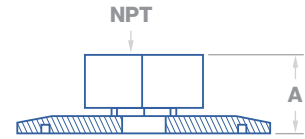


Valex

Vacuum Components

Adaptors

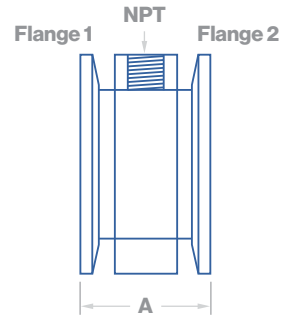
NW-NPT Female Adaptor



Part Number
V*-34F-N1B00
V*-34F-N1B01
V*-34F-N1C01
V*-34F-N1D01
V*-34F-N1D03
V*-34F-N1E01
V*-34F-N1E03

Dimensions in Inches & Millimeters					
Flange Size		NPT	A		
NW	inch	inch	inch	mm	
16	3/4"	1/8"	0.95	24.13	
16	3/4"	1/4"	1.100	27.94	
25	1"	1/4"	1.100	27.94	
40	1-1/2"	1/4"	1.100	27.94	
40	1-1/2"	1/2"	1.44	36.58	
50	2"	1/4"	1.100	27.94	
50	2"	1/2"	1.44	36.58	

NW Gauge Tee Adaptor



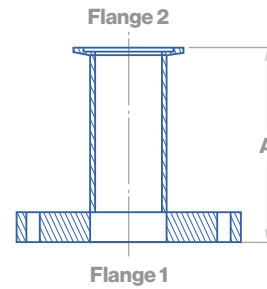
Part Number
V*-34G-N1B00
V*-34G-N1B01
V*-34G-N1C00
V*-34G-N1C01
V*-34G-N1D00
V*-34G-N1D01
V*-34G-N1E00
V*-34G-N1E01

Dimensions in Inches & Millimeters				
Flange 1 & 2 Size		FNPT	A	
NW		inch	inch	mm
16		1/8"	1.57	39.88
16		1/4"	1.57	39.88
25		1/8"	1.57	39.88
25		1/4"	1.57	39.88
40		1/8"	1.57	39.88
40		1/4"	1.57	39.88
50		1/8"	1.57	39.88
50		1/4"	1.57	39.88

* To include part number material & finish options please reference configurator on pages #120 – 121

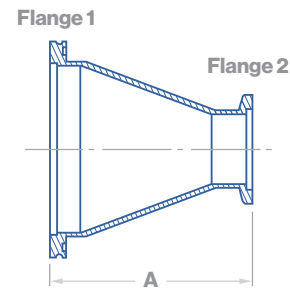


CF-NW Straight Adaptor



Part Number	Dimensions in Inches & Millimeters					
	Flange 1		Flange 2		A	
	CF (inch)	NW	inch	mm	inch	mm
V*-34S-C2AXN1A	133	10	1.750	44.45		
V*-34S-C2AXN1B	133	16	1.750	44.45		
V*-34S-C2BXN1C	212	25	1.742	44.25		
V*-34S-C2CXN1D	275	40	1.784	45.31		
V*-34S-C2AXN1E	133	50	1.750	44.45		
V*-34S-C2DXN1E	338	50	1.800	45.72		

ISO-K-NW Concentric Adaptor Low Profile



Part Number	Dimensions in Inches & Millimeters							
	Flange 1			Flange 2			A	
	ISO	inch	mm	NW	inch	mm	inch	mm
V*-34L-K3AXN1C	63	2-1/2"	63.50	25	1"	25.40	2.47	62.74
V*-34L-K3AXN1D	63	2-1/2"	63.50	40	1-1/2"	38.10	2.47	62.74
V*-34L-K3AXN1E	63	2-1/2"	63.50	50	2"	50.80	2.47	62.74
V*-34L-K3BXN1D	80	3"	76.20	40	1-1/2"	38.10	2.47	62.74
V*-34L-K3BXN1E	80	3"	76.20	50	2"	50.80	2.47	62.74
V*-34L-K3CXN1D	100	4"	101.60	40	1-1/2"	38.10	2.47	62.74
V*-34L-K3CXN1E	100	4"	101.60	50	2"	50.80	2.47	62.74

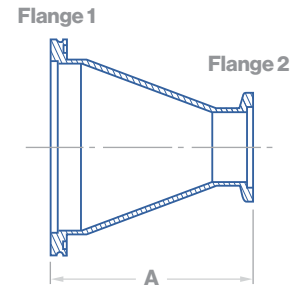
* To include part number material & finish options please reference configurator on pages #120 - 121



Valex
Vacuum
Components

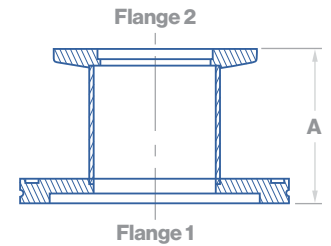
Adaptors

ISO-K-NW Concentric Adaptor Type 4



Part Number	Dimensions in Inches & Millimeters							
	Flange 1			Flange 2			A	
	ISO	inch	mm	NW	inch	mm	inch	mm
V*-34-K3AXN1D	63	2-1/2"	63.50	40	1"	25.40	2.775	70.49
V*-34-K3AXN1E	63	2-1/2"	63.50	50	2"	38.10	4.025	102.24
V*-34-K3BXN1D	80	3"	76.20	40	1-1/2"	38.10	2.775	70.49
V*-34-K3BXN1E	80	3"	76.20	50	2"	50.80	4.025	102.24
V*-34-K3CXN1D	100	4"	101.60	40	1-1/2"	38.10	5.680	144.27
V*-34-K3CXN1E	100	4"	101.60	50	2"	50.80	4.025	102.24

ISO-K-NW Straight Reducer Adaptor

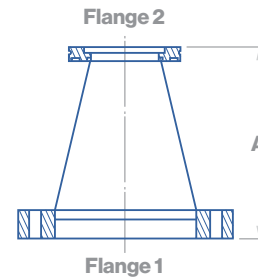


Part Number	Dimensions in Inches & Millimeters							
	Flange 1			Flange 2			A	
	ISO	inch	mm	NW	inch	mm	inch	mm
V*-34S-K3AXN1C	63	2-1/2"	63.50	25	1"	25.40	1.825	46.36
V*-34S-K3AXN1D	63	2-1/2"	63.50	40	1-1/2"	38.10	1.825	46.36
V*-34S-K3AXN1E	63	2-1/2"	63.50	50	2"	50.80	1.825	46.36
V*-34S-K3BXN1C	80	3"	76.20	25	1"	25.40	1.825	46.36
V*-34S-K3BXN1D	80	3"	76.20	40	1-1/2"	38.10	1.825	46.36
V*-34S-K3BXN1E	80	3"	76.20	50	2"	50.80	1.825	46.36
V*-34S-K3CXN1C	100	4"	101.60	25	1"	25.40	1.825	46.36
V*-34S-K3CXN1D	100	4"	101.60	40	1-1/2"	38.10	1.825	46.36
V*-34S-K3CXN1E	100	4"	101.60	50	2"	50.80	1.825	46.36

* To include part number material & finish options please reference configurator on pages #120 – 121

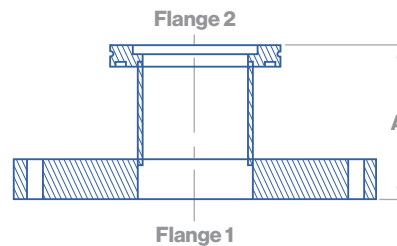


CF-ISO-K Conical Reducer Adaptor



Part Number	Dimensions in Inches & Millimeters			
	Flange 1	Flange 2	A	
	CF (inch)	ISO	inch	mm
V*-34S-C2CXK3A	2.75	63	2.83	71.88
V*-34S-C2CXK3B	2.75	80	4.08	103.63
V*-34S-C2DXK3A	3.38	63	2.85	72.39
V*-34S-C2DXK3B	3.38	80	4.10	104.14
V*-34S-C2DXK3C	3.38	100	4.10	104.14
V*-34S-C2EXK3B	4.50	80	4.25	107.95
V*-34S-C2EXK3C	4.50	100	4.25	107.95
V*-34S-C2FXK3A	4.62	63	4.25	107.95
V*-34S-C2FXK3C	4.62	100	4.25	107.95
V*-34S-C2GXK3A	6.00	63	4.31	109.47
V*-34S-C2GXK3B	6.00	80	4.31	109.47

CF-ISO-K Straight Reducer Adaptor



Part Number	Dimensions in Inches & Millimeters			
	Flange 1	Flange 2	A	
	CF (inch)	ISO	inch	mm
V*-34S-C2AXK3A	1.33	63	4.31	109.47
V*-34S-C2AXK3B	1.33	80	4.31	109.47
V*-34S-C2BXK3C	2.12	100	4.37	111.00
V*-34S-C2CXK3D	2.75	160	4.44	112.78
V*-34S-C2AXK3E	1.33	200	7.88	200.15

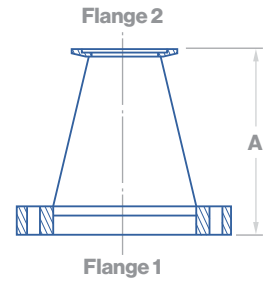
* To include part number material & finish options please reference configurator on pages #120 - 121



Valex
Vacuum
Components

Adaptors

CF–NW Conical Reducer Adaptor

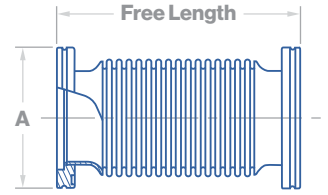


Part Number	Dimensions in Inches & Millimeters			
	Flange 1	Flange 2	A	
	CF (inch)	NW	inch	mm
V*-34-C2AXK1C	1.33	25	2.70	68.58
V*-34-C2AXK1D	1.33	40	2.70	68.58
V*-34-C2BXK1B	2.12	16	2.69	68.33
V*-34-C2BXK1D	2.12	40	2.69	68.33
V*-34-C2BXK1E	2.12	50	2.69	68.33
V*-34-C2CXK1B	2.75	16	2.73	69.34
V*-34-C2CXK1C	2.75	25	2.73	69.34
V*-34-C2CXK1E	2.75	50	2.73	69.34
V*-34-C2DXK1C	3.38	25	2.75	69.85
V*-34-C2DXK1D	3.38	40	2.75	69.85
V*-34-C2EXK1D	4.50	40	2.90	73.66
V*-34-C2EXK1E	4.50	50	2.90	73.66
V*-34-C2FXK1D	4.62	40	4.15	105.41
V*-34-C2FXK1E	4.62	50	4.15	105.41
V*-34-C2GXK1E	6.00	50	4.21	106.93

* To include part number material & finish options please reference configurator on pages #120 – 121



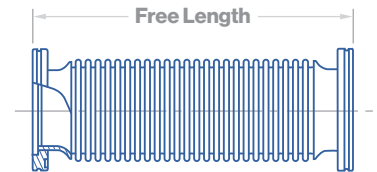
ISO-K Flexible Bellows



Part Number	Dimensions in Inches				
	Flange Size		A	Free Length	Compressed
	ISO	inch			
V*-42B-K3ABF	63	2-1/2"	3.740	6.000	5.000
V*-42B-K3BBF	80	3"	4.331	6.000	5.000
V*-42B-K3CBF	100	4"	5.118	6.000	5.000
V*-42B-K3DBF	160	6"	7.087	6.000	5.000

Part Number	Dimensions in Millimeters				
	Flange Size		A	Free Length	Compressed
	ISO	mm			
V*-42B-K3ABF	63	63.5	94.996	152.4	127.0
V*-42B-K3BBF	80	76.2	10.007	152.4	127.0
V*-42B-K3CBF	100	101.6	129.997	152.4	127.0
V*-42B-K3DBF	160	152.4	180.010	152.4	127.0

ISO-K Flexible Hose

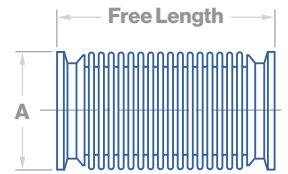


Part Number	Dimensions in Inches & Millimeters				
	Flange Size			Free Length	
	ISO	inch	mm	inch	mm
V*-42H-K3AHB	63	2-1/2"	63.5	12.00	304.80
V*-42H-K3AHC	63	2-1/2"	63.5	18.00	457.20
V*-42H-K3AHE	63	2-1/2"	63.5	24.00	609.60
V*-42H-K3AHF	63	2-1/2"	63.5	36.00	914.40
V*-42H-K3AHG	63	2-1/2"	63.5	40.00	1016.00
V*-42H-K3BHB	80	3"	76.2	12.00	304.80
V*-42H-K3BHC	80	3"	76.2	18.00	457.20
V*-42H-K3BHE	80	3"	76.2	24.00	609.60
V*-42H-K3BHF	80	3"	76.2	36.00	914.40
V*-42H-K3BHG	80	3"	76.2	40.00	1016.00
V*-42H-K3CHB	100	4"	101.6	12.00	304.80
V*-42H-K3CHC	100	4"	101.6	18.00	457.20
V*-42H-K3CHE	100	4"	101.6	24.00	609.60
V*-42H-K3CHF	100	4"	101.6	36.00	914.40
V*-42H-K3CHG	100	4"	101.6	40.00	1016.00

* To include part number material & finish options please reference configurator on pages #120 – 121



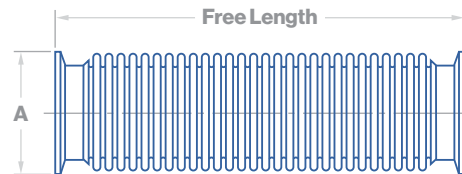
NW Flexible Bellows Hose



Part Number
V*-42H-N1ABA
V*-42H-N1BBA
V*-42H-N1CBD
V*-42H-N1DBD
V*-42H-N1EBD

Dimensions in Inches & Millimeters							
NW	Flange Size		A		Free Length		
	inch	mm	inch	mm	inch	mm	
10	1/2"	12.70	1.180	29.972	3.200	81.28	
16	3/4"	19.05	1.180	29.972	3.200	81.28	
25	1"	25.40	1.575	40.005	4.200	106.68	
40	1-1/2"	38.10	2.160	54.864	4.200	106.68	
50	2"	50.80	2.950	74.930	4.200	106.68	

NW Flexible Hose



Part Number
V*-42H-N1BHB
V*-42H-N1BHC
V*-42H-N1BHE
V*-42H-N1BHF
V*-42H-N1CHB
V*-42H-N1CHC
V*-42H-N1CHE
V*-42H-N1CHF
V*-42H-N1DHB
V*-42H-N1DHC
V*-42H-N1DHE
V*-42H-N1DHF
V*-42H-N1EHB
V*-42H-N1EHC
V*-42H-N1EHE
V*-42H-N1EHF

Dimensions in Inches & Millimeters							
NW	Flange Size		A		B		
	inch	mm	inch	mm	inch	mm	
16	3/4"	19.05	1.180	29.972	12.00	304.80	
16	3/4"	19.05	1.180	29.972	18.00	457.20	
16	3/4"	19.05	1.180	29.972	24.00	609.60	
16	3/4"	19.05	1.180	29.972	36.00	914.40	
25	1"	25.40	1.575	40.005	12.00	304.80	
25	1"	25.40	1.575	40.005	18.00	457.20	
25	1"	25.40	1.575	40.005	24.00	609.60	
25	1"	25.40	1.575	40.005	36.00	914.40	
40	1-1/2"	38.10	2.160	54.864	12.00	304.80	
40	1-1/2"	38.10	2.160	54.864	18.00	457.20	
40	1-1/2"	38.10	2.160	54.864	24.00	609.60	
40	1-1/2"	38.10	2.160	54.864	36.00	914.40	
50	2"	50.80	2.950	74.930	12.00	304.80	
50	2"	50.80	2.950	74.930	18.00	457.20	
50	2"	50.80	2.950	74.930	24.00	609.60	
50	2"	50.80	2.950	74.930	36.00	914.40	

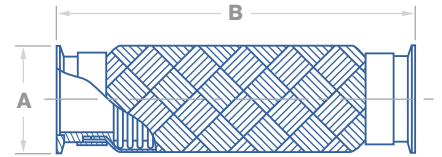
* To include part number material & finish options please reference configurator on pages #120 - 121



Valex
Vacuum
Components

Bellows & Hoses

NW Braided Flexible Hose



Part Number	Dimensions in Inches & Millimeters						
	Flange Size			A		B	
	NW	inch	mm	inch	mm	inch	mm
V*-42R-N1BHB	16	3/4"	19.05	1.180	29.972	12.00	304.80
V*-42R-N1BHC	16	3/4"	19.05	1.180	29.972	18.00	457.20
V*-42R-N1BHE	16	3/4"	19.05	1.180	29.972	24.00	609.60
V*-42R-N1BHF	16	3/4"	19.05	1.180	29.972	36.00	914.40
V*-42R-N1CHB	25	1"	25.40	1.575	40.005	12.00	304.80
V*-42R-N1CHC	25	1"	25.40	1.575	40.005	18.00	457.20
V*-42R-N1CHE	25	1"	25.40	1.575	40.005	24.00	609.60
V*-42R-N1CHF	25	1"	25.40	1.575	40.005	36.00	914.40
V*-42R-N1DHB	40	1-1/2"	38.10	2.160	54.864	12.00	304.80
V*-42R-N1DHC	40	1-1/2"	38.10	2.160	54.864	18.00	457.20
V*-42R-N1DHE	40	1-1/2"	38.10	2.160	54.864	24.00	609.60
V*-42R-N1DHF	40	1-1/2"	38.10	2.160	54.864	36.00	914.40
V*-42R-N1EHB	50	2"	50.80	2.950	74.930	12.00	304.80
V*-42R-N1EHC	50	2"	50.80	2.950	74.930	18.00	457.20
V*-42R-N1EHE	50	2"	50.80	2.950	74.930	24.00	609.60
V*-42R-N1EHF	50	2"	50.80	2.950	74.930	36.00	914.40

* To include part number material & finish options please reference configurator on pages #120 – 121



Part Number Configurator

XX

Material / Finish

Standard Finish Stainless Steel

VA = 304
VB = 316
VC = 316L
VD = 304L

Electropolished Stainless Steel

VK = 304 EP
VL = 316 EP
VM = 316L EP
VN = 304L EP

Other Materials

V0 = Use for plastic,
rubber, rubber
& metal, or
mult. alloy

*(Ex: centering-rings w/ o-rings
and spacer of alloy chemistries
and melt type, or capture ring*,
gaskets, and plastic caps)*

**Centering-rings w/ o-rings
only, used SS option*

V1 = Aluminum

*(Used for clamps**, spacer
& capture ring)*

***For stainless, use SS option*

- XXX

Configuration

2 = 90° Elbow, No Tangent
2T = 90° Elbow, with Tangent
2L = 90° Elbow, Extended Tangent
2M = 90° Elbow, Mitered No Tangent
2X = 90° Elbow, Mitered Extended
2K = 45° Elbow, No Tangent
2N = 45° Elbow, with Tangent
2E = 45° Elbow, Extended Tangent
6H = Nipple, Half
6F = Nipple, Full
7 = Tee, Equal
7L = Tee, Equal, Extended
7R = Tee, Reducing
9 = Cross, 4-Way
9R = Cross, 4-Way Reducing
9L = Cross, 4-Way, Extended
9F = Cross, 5-Way
9S = Cross, 6-Way
9C = Cross, 6-Way Cube
13 = Clamp, Single Claw
13D = Clamp, Double Claw
13W = Clamp, Wing Nut
13L = Clamp, Lever / Quick
13B = Clamp, Bulkhead
16 = Weld Cap
16D = Plastic Dust Cap
31 = Reducer, Concentric / Conical
31T = Reducer, Concentric with Tangent
31S = Reducer, Straight
34 = Adapter, Concentric / Conical
34L = Adapter, Concentric Low Profile
34T = Adapter, Concentric with Tangent
34S = Adapter, Straight
34V = Adapter, Face Seal Male
34A = Adapter, Face Seal Female
34C = Adapter, Compression
34M = Adapter, NPT Male
34F = Adapter, NPT Female
34G = Adapter, Gauge Tee
38 = Flange, Blank
38O = Flange, Blank, Neck Weld
38Q = Flange, Blank, Neck Weld w/ Weld Prep
38D = Flange, Blank, Double Sided
38B = Flange, Bored
38S = Flange, Bored, Socket Weld
38N = Flange, Bored, Short Neck Weld

38L = Flange, Bored, Long Neck Weld
38K = Flange, Bored, Neck Weld
38V = Flange, Bored, Neck Weld
w/ Weld Prep
38M = Flange, Bored, Double Sided
38Z = Flange, Bored, Zero Length Reducer
39 = Ring, Centering
39C = Ring, Centering with O-Ring
39M = Ring, Centering, Screen/Mesh
with O-Ring
39N = Ring, Centering, Screen with O-Ring
& Spacer Ring
39S = Ring, Spacer
39D = Ring, Centering & Spacer
with O-Ring
39O = Ring, Overpressure
39E = Ring, Centering with O-Ring
& Overpressure Ring Assembly
39P = Ring, Capture
39F = Ring, Centering with O-Ring
& Capture Ring Assembly
39L = Ring, Reducing Centering
with O-Ring Assembly
39R = Ring, Rotatable Flange Retainer
42B = Bellows, Flexible
42H = Hose, Flexible
42R = Hose, Braided Flexible
70 = Hardware, Bolts & Washers
70B = Hardware, Bolts, Nuts & Washers
70C = Hardware, 12-PT Bolts & Washers
70D = Hardware, 12-PT Bolts,
Nuts & Washers
70P = Hardware, Plate Nuts
70Q = Hardware, Plate Nuts & Bolts
70R = Hardware, Plate Nuts,
Bolts & Washers
70S = Hardware, Plate Nuts & 12-PT Bolts
70T = Hardware, Plate Nuts, 12-PT Bolts
& Washers
72 = Gasket
73 = O-Ring

- X

Type

Weld Type

W = Butt Weld

Flange Type

N = NW / KF (ISO-KF)
C = CF
K = ISO-K
F = ISO-F

Centering Type

N = NW / KF (ISO-KF)
I = ISO-KF / ISO-F

Used for 2nd Size, Flange Size
or Flange Size ID



XX
Size

If required, build 2nd size by using
two previous columns (type and
size code) codes if applicable.

XX
Attribute

Inch

- 00 = 1/8"
- 01 = 1/4"
- 02 = 3/8"
- 03 = 1/2"
- 04 = 3/4"
- 05 = 1"
- 06 = 1-1/4"
- 07 = 1-1/2"
- 08 = 1-5/8"
- 09 = 1-3/4"
- 10 = 2"
- 12 = 2-1/2"
- 14 = 3"
- 18 = 4"
- 22 = 5"
- 26 = 6"
- 30 = 8"
- 34 = 10"
- 38 = 12"
- 42 = 12.75"
- 46 = 14"
- 50 = 16"
- 54 = 20"

**NW Flange /
Centering Ring /
Clamp**

- 1A = NW10, 1.18"
(30mm) OD
- 1B = NW16, 1.18"
(30mm) OD
- 1C = NW25, 1.58"
(40mm) OD
- 1D = NW40, 2.16"
(55mm) OD
- 1E = NW50, 2.95"
(75mm) OD
- 1F = NW20, 1.58"
(40mm) OD
- 1G = NW32, 2.16"
(55mm) OD

CF Flange

- 2A = 1.33", 1.33"
(33.8mm) OD
- 2B = 2.12", 2.12"
(53.8mm) OD
- 2C = 2.75", 2.73"
(69.3mm) OD

- 2D = 3.38", 3.36"
(85.3mm) OD
- 2E = 4.50", 4.47"
(113.5mm) OD
- 2F = 4.62", 4.61"
(117.1mm) OD
- 2G = 6.00", 5.97"
(151.6mm) OD
- 2H = 6.75", 6.73"
(170.9mm) OD
- 2I = 8.00", 7.97"
(202.4mm) OD
- 2J = 10.00", 9.97"
(253.2mm) OD
- 2K = 12.00", 11.97"
(304.0mm) OD
- 2L = 13.25", 13.25"
(336.6mm) OD
- 2M = 14.00", 14.00"
(355.6mm) OD
- 2N = 14.50", 14.50"
(368.3mm) OD
- 2O = 16.50", 16.50"
(419.1mm) OD

**ISO Flange / Centering
Rings / Clamps**

- 3A = ISO 63, 3.74"
(95mm) OD
- 3B = ISO 80, 4.33"
(110mm) OD
- 3C = ISO 100, 5.12"
(130mm) OD
- 3D = ISO 160, 7.09"
(180mm) OD
- 3E = ISO 200, 9.45"
(240mm) OD
- 3F = ISO 250, 11.42"
(290mm) OD
- 3G = ISO 320, 14.75"
(370mm) OD
- 3H = ISO 400, 17.72"
(450mm) OD
- 3I = ISO 500, 21.65"
(550mm) OD

ISO Claw Clamp

- 4A = ISO 63 - ISO 100
- 4B = ISO 160 - ISO 250
- 4C = ISO 320 - ISO 500

Other

Blank = Configurations not listed below

Flanges

- FF = Non-rotatable
- FS = Non-rotatable, Tapped, Inch
- FM = Non-rotatable, Tapped, Metric
- FR = Rotatable
- FT = Rotatable, Tapped, Inch
- FN = Rotatable, Tapped, Metric

CF Flanges (Teas & Crosses)

- TA = Non-rotatable, Rotatable
- TB = Non-rotatable, 2 Rotatable
- TC = 2 Non-rotatable, 2 Rotatable
- TD = 2 Non-rotatable, 3 Rotatable
- TE = 3 Non-rotatable, 3 Rotatable

O-Ring Material Options

(O-rings or centering ring with O-ring)

- M1 = NBR (Buna)
- M2 = EPDM
- M3 = FKM (Viton)
- M4 = Silicone
- M5 = Kalrez

Gasket Material Options

- G1 = PTFE
- G2 = Copper
- G3 = Silver Plated Copper

**Centering Ring with O-ring
(Multiple Alloy Options)
& Aluminum Spacer Ring**

- SA = 304 Centering Ring
w/ NBR (BUNA) O-ring
- SB = 304 Centering Ring
w/ EPDM O-ring
- SC = 304 Centering Ring
w/ FKM (VITON) O-ring
- SD = 304 Centering Ring
w/ Silicone O-ring
- SE = 304 Centering Ring
w/ Kalrez O-ring
- SF = 316 Centering Ring
w/ NBR (BUNA) O-ring
- SG = 316 Centering Ring
w/ EPDM O-ring
- SH = 316 Centering Ring
w/ FKM (VITON) O-ring
- SI = 316 Centering Ring w/ Silicone O-ring
- SJ = 316 Centering Ring w/ Kalrez O-ring

**Centering Ring with O-ring
(Multiple Alloy Options)
& Aluminum Capture Ring**

- CA = 304 Centering Ring
w/ NBR (BUNA) O-ring
- CB = 304 Centering Ring
w/ EPDM O-ring
- CC = 304 Centering Ring
w/ FKM (VITON) O-ring
- CD = 304 Centering Ring
w/ Silicone O-ring
- CE = 304 Centering Ring
w/ Kalrez O-ring
- CF = 316 Centering Ring
w/ NBR (BUNA) O-ring
- CG = 316 Centering Ring
w/ EPDM O-ring
- CH = 316 Centering Ring
w/ FKM (VITON) O-ring
- CI = 316 Centering Ring
w/ Silicone O-ring
- CJ = 316 Centering Ring
w/ Kalrez O-ring

**Hardware, Plate Nuts,
Clamps with Bolts**

- PS = Inch
- PT = Inch, 10-8SS (Bolts)
- PU = Inch, 10-8SS Silver-Plated (Bolts)
- PM = Metric
- PN = Metric, 10-8SS (Bolts)
- PO = Metric, 10-8SS Silver-Plated (Bolts)
- CG = 316 Centering Ring w/ EPDM O-ring
- CH = 316 Centering Ring
w/ FKM (VITON) O-ring
- CI = 316 Centering Ring
w/ Silicone O-ring
- CJ = 316 Centering Ring
w/ Kalrez O-ring

**Bellows
Length**

- BA = 3.2"
- BB = 3.5"
- BC = 4.0"
- BD = 4.2"
- BE = 5.2"
- BF = 6.0"
- BG = 7.0"
- BH = 8.0"
- BI = 8.2"

**Hose/Braided
Hose Length**

- HA = 10.0"
- HB = 12.0"
- HC = 18.0"
- HD = 20.0"
- HE = 24.0"
- HF = 36.0"
- HG = 40.0"